

王宮の花火の音楽
1.Overture

Handel

BK=1

Moderato

*Sf*

BK=2



BK=3



BK=4



BK=5



BK=6



BK=7



BK=8

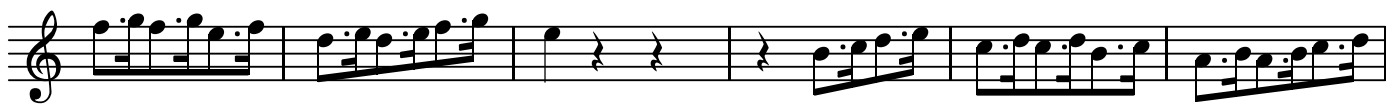


BK=9



Allegro

BK=10



BK=11



BK=12



BK=13



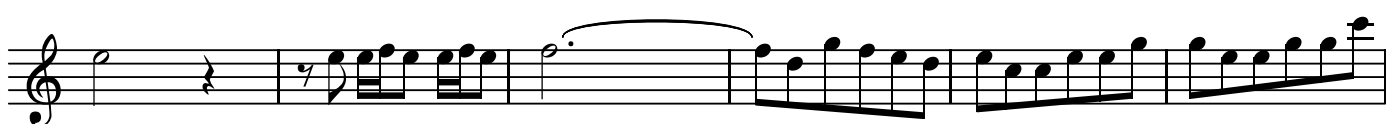
BK=14



BK=15



BK=16



BK=17



BK=18



BK=19



BK=20



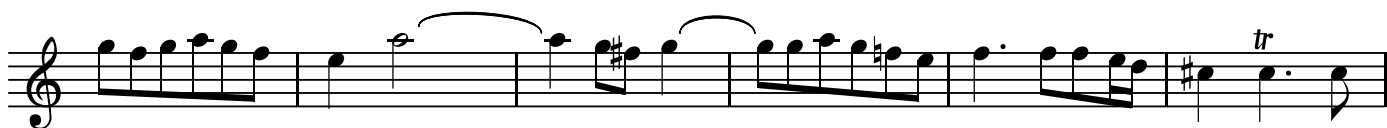
BK=21



BK=22



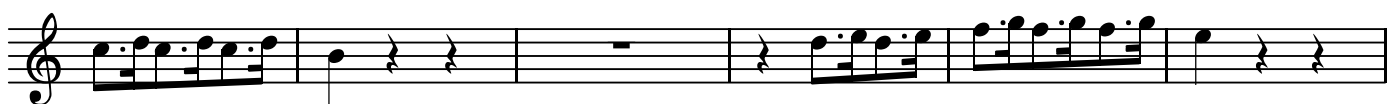
BK=23



BK=24



BK=25



BK=26



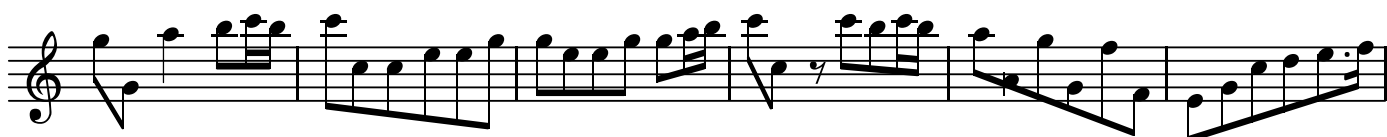
BK=27



BK=28



BK=29



BK=30



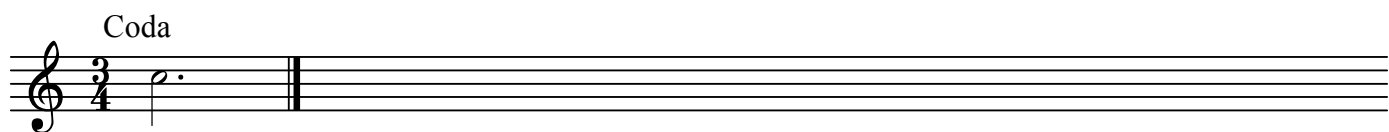
BK=31



BK=32



BK=33



王宮の花火の音楽

1.Overture

Handel

BK=1



S2

BK=2



BK=3



BK=4



BK=5



BK=6



BK=7



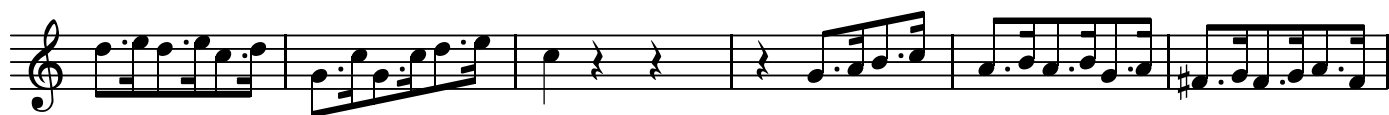
BK=8



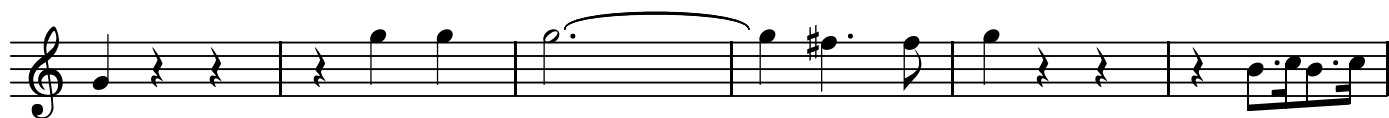
BK=9



BK=10



BK=11



BK=12



BK=13



BK=14



BK=15



BK=16



BK=17



BK=18



BK=19



BK=20



BK=21



BK=22



BK=23



BK=24



BK=25



BK=26



BK=27



BK=28



BK=29



BK=30



BK=31

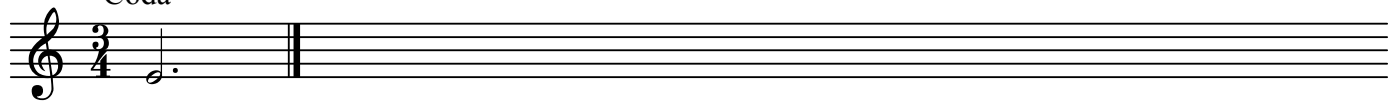


BK=32

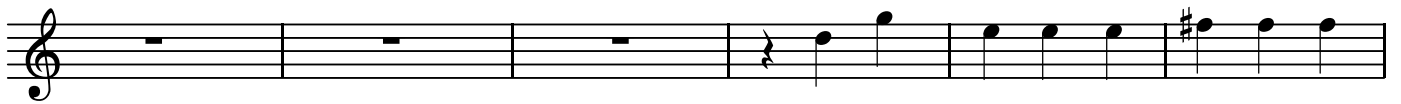


BK=33

Coda



BK=10



BK=11



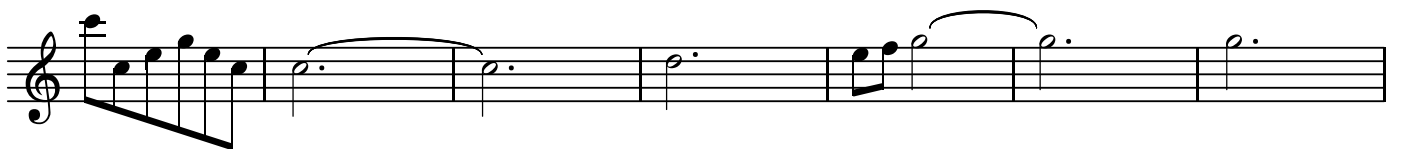
BK=12



BK=13



BK=14



BK=15



BK=16



BK=17



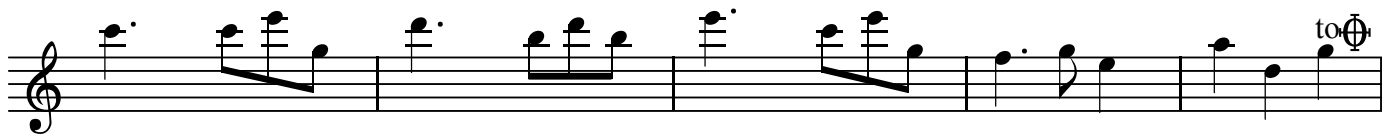
BK=18



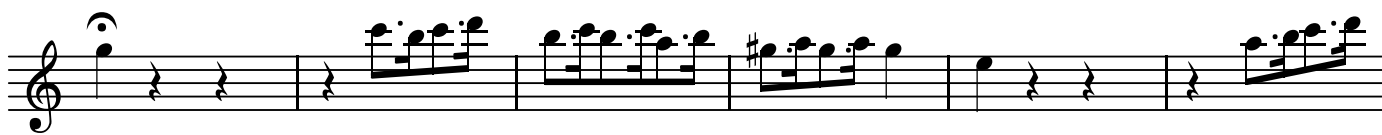
BK=19



BK=20



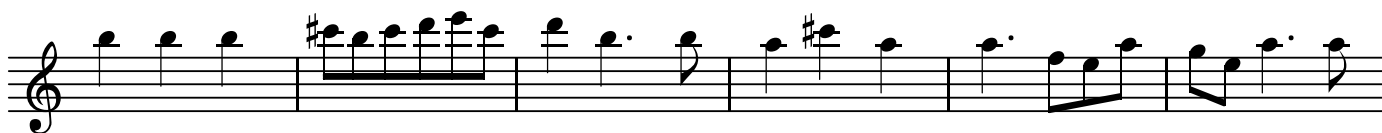
BK=21



BK=22



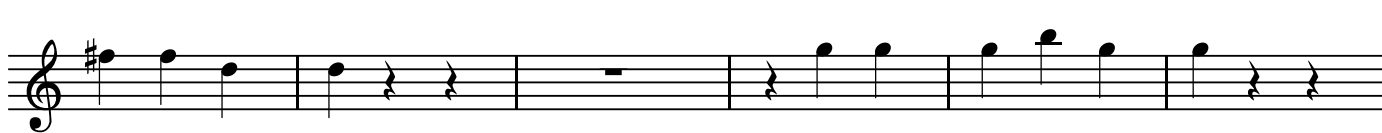
BK=23



BK=24



BK=25



BK=26



BK=27



BK=28



BK=29



BK=30



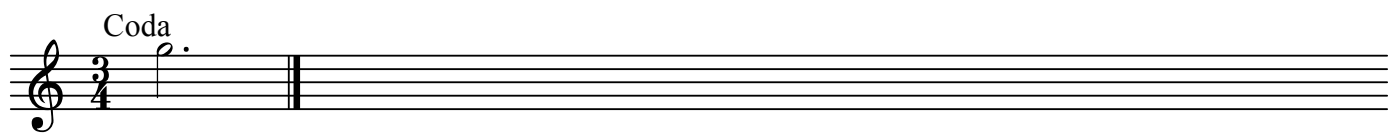
BK=31



BK=32



BK=33



BK=10



BK=11



BK=12



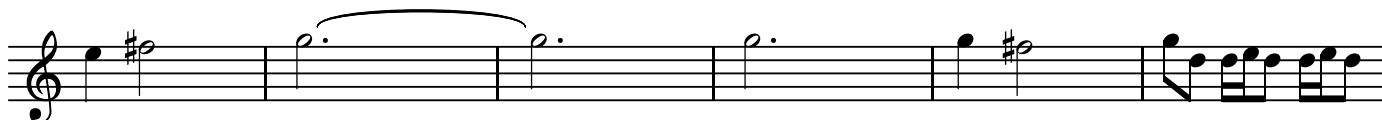
BK=13



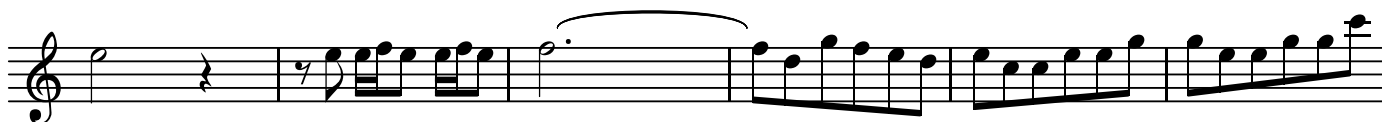
BK=14



BK=15



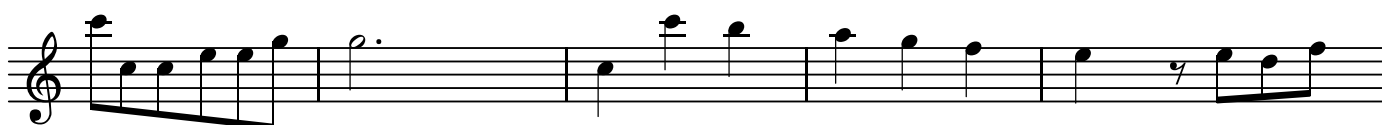
BK=16



BK=17



BK=18



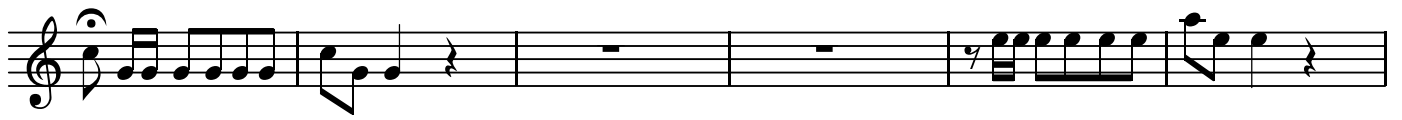
BK=19



BK=20



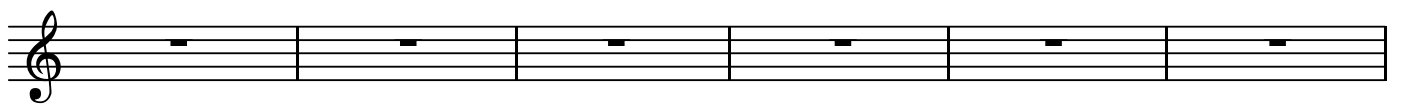
BK=21



BK=22



BK=23



BK=24



BK=25



BK=26



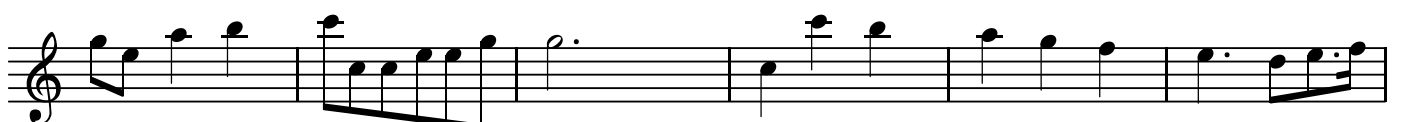
BK=27



BK=28



BK=29



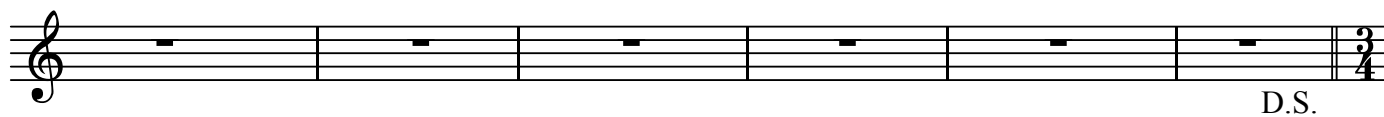
BK=30



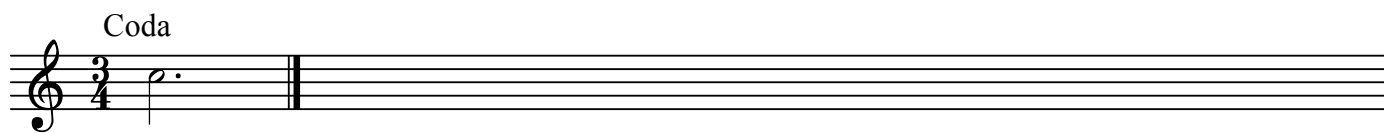
BK=31



BK=32



BK=33



王宮の花火の音楽
1.Overture

Handel

BK=1

Musical staff BK=1, starting with a treble clef and a common time signature (C). The melody begins with a quarter rest, followed by a dotted quarter note G4, an eighth note A4, a quarter note B4, a dotted quarter note C5, an eighth note B4, a quarter note A4, a dotted quarter note G4, an eighth note F4, a quarter note E4, a dotted quarter note D4, an eighth note C4, and a quarter note B3. A fermata is placed over the final B3.

BK=2

Musical staff BK=2, continuing the melody from BK=1. It starts with a quarter note G4, an eighth note A4, a quarter note B4, a dotted quarter note C5, an eighth note B4, a quarter note A4, a dotted quarter note G4, an eighth note F4, a quarter note E4, a dotted quarter note D4, an eighth note C4, and a quarter note B3. A fermata is placed over the final B3.

BK=3

Musical staff BK=3, continuing the melody. It starts with a quarter note G4, an eighth note A4, a quarter note B4, a dotted quarter note C5, an eighth note B4, a quarter note A4, a dotted quarter note G4, an eighth note F4, a quarter note E4, a dotted quarter note D4, an eighth note C4, and a quarter note B3. A fermata is placed over the final B3.

BK=4

Musical staff BK=4, continuing the melody. It starts with a quarter note G4, an eighth note A4, a quarter note B4, a dotted quarter note C5, an eighth note B4, a quarter note A4, a dotted quarter note G4, an eighth note F4, a quarter note E4, a dotted quarter note D4, an eighth note C4, and a quarter note B3. A fermata is placed over the final B3.

BK=5

Musical staff BK=5, continuing the melody. It starts with a quarter note G4, an eighth note A4, a quarter note B4, a dotted quarter note C5, an eighth note B4, a quarter note A4, a dotted quarter note G4, an eighth note F4, a quarter note E4, a dotted quarter note D4, an eighth note C4, and a quarter note B3. A fermata is placed over the final B3.

BK=6

Musical staff BK=6, continuing the melody. It starts with a quarter note G4, an eighth note A4, a quarter note B4, a dotted quarter note C5, an eighth note B4, a quarter note A4, a dotted quarter note G4, an eighth note F4, a quarter note E4, a dotted quarter note D4, an eighth note C4, and a quarter note B3. A fermata is placed over the final B3.

BK=7

Musical staff BK=7, continuing the melody. It starts with a quarter note G4, an eighth note A4, a quarter note B4, a dotted quarter note C5, an eighth note B4, a quarter note A4, a dotted quarter note G4, an eighth note F4, a quarter note E4, a dotted quarter note D4, an eighth note C4, and a quarter note B3. A fermata is placed over the final B3.

BK=8

Musical staff BK=8, continuing the melody. It starts with a quarter note G4, an eighth note A4, a quarter note B4, a dotted quarter note C5, an eighth note B4, a quarter note A4, a dotted quarter note G4, an eighth note F4, a quarter note E4, a dotted quarter note D4, an eighth note C4, and a quarter note B3. A fermata is placed over the final B3.

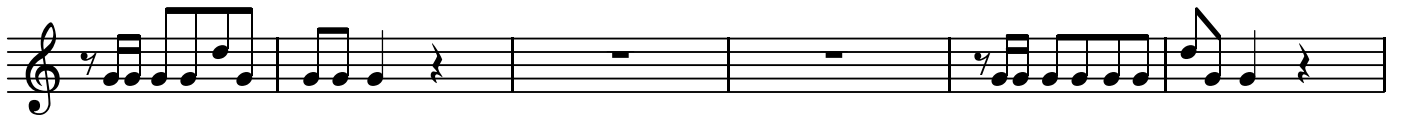
BK=9

Musical staff BK=9, continuing the melody. It starts with a treble clef and a 3/4 time signature. The melody begins with a quarter note G4, an eighth note A4, a quarter note B4, a dotted quarter note C5, an eighth note B4, a quarter note A4, a dotted quarter note G4, an eighth note F4, a quarter note E4, a dotted quarter note D4, an eighth note C4, and a quarter note B3. A fermata is placed over the final B3.

BK=10



BK=11



BK=12



BK=13



BK=14



BK=15



BK=16



BK=17



BK=18



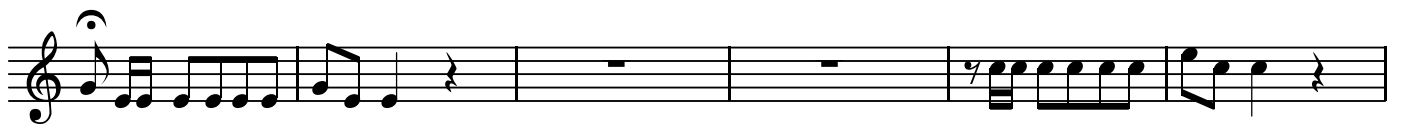
BK=19



BK=20



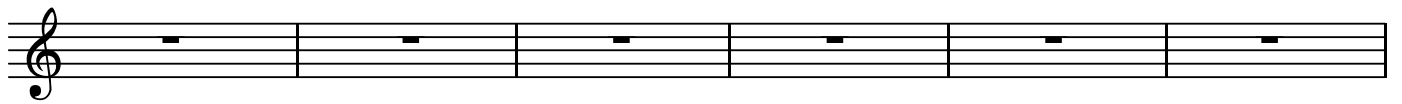
BK=21



BK=22



BK=23



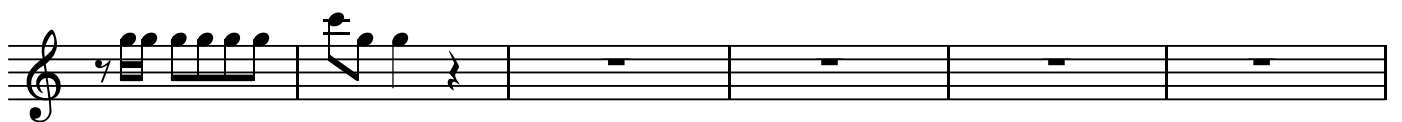
BK=24



BK=25



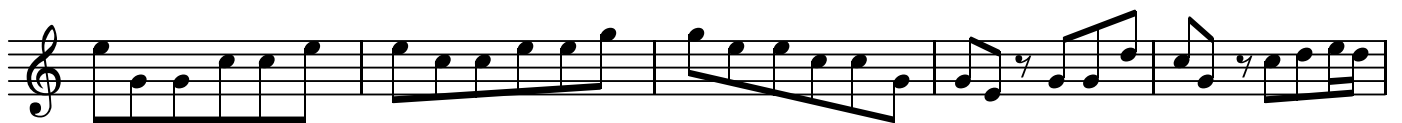
BK=26



BK=27



BK=28



BK=29



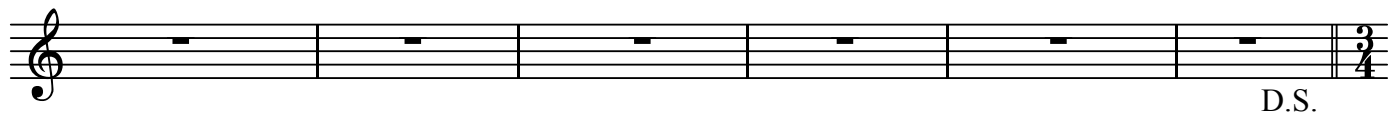
BK=30



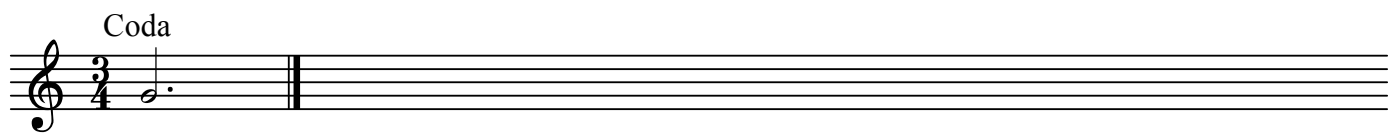
BK=31



BK=32



BK=33



王宮の花火の音楽
1.Overture

Handel

BK=1

First musical staff (BK=1) in bass clef, common time signature. It begins with a dynamic marking of *B* (Basso). The melody consists of eighth and sixteenth notes.

BK=2

Second musical staff (BK=2) in bass clef, common time signature. The melody continues with eighth and sixteenth notes.

BK=3

Third musical staff (BK=3) in bass clef, common time signature. The melody continues with eighth and sixteenth notes.

BK=4

Fourth musical staff (BK=4) in bass clef, common time signature. The melody continues with eighth and sixteenth notes.

BK=5

Fifth musical staff (BK=5) in bass clef, common time signature. The melody continues with eighth and sixteenth notes.

BK=6

Sixth musical staff (BK=6) in bass clef, common time signature. The melody continues with eighth and sixteenth notes.

BK=7

Seventh musical staff (BK=7) in bass clef, common time signature. The melody continues with eighth and sixteenth notes.

BK=8

Eighth musical staff (BK=8) in bass clef, common time signature. The melody continues with eighth and sixteenth notes.

BK=9

Ninth musical staff (BK=9) in bass clef, 3/4 time signature. It begins with a repeat sign. The melody continues with eighth and sixteenth notes.

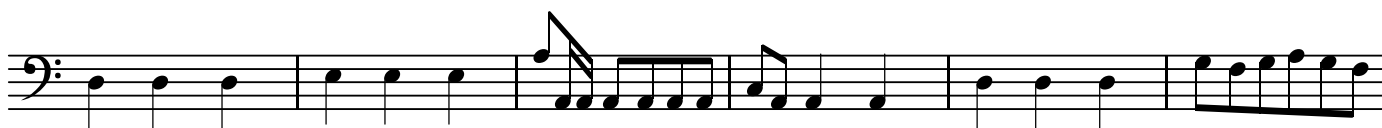
BK=20



BK=21



BK=22



BK=23



BK=24



BK=25



BK=26



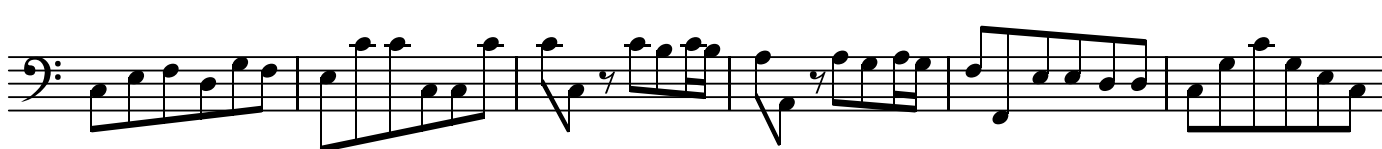
BK=27



BK=28



BK=29



BK=30



BK=31



BK=32



BK=33

Coda

