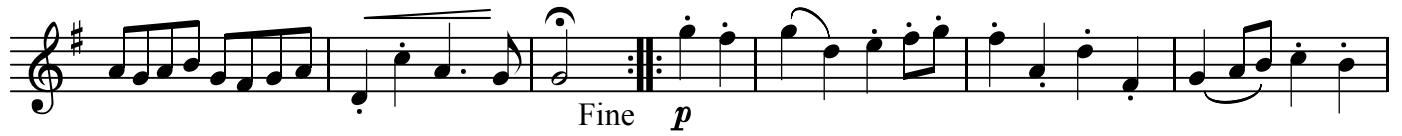


## 5. GAVOTTO

BK=1



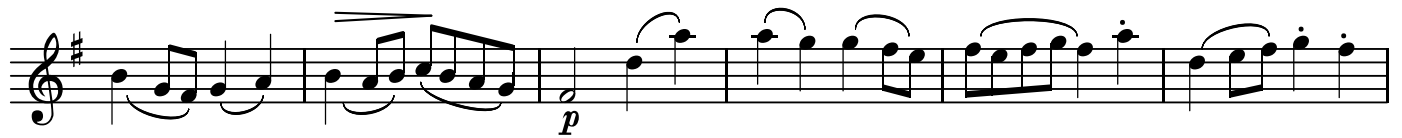
BK=2



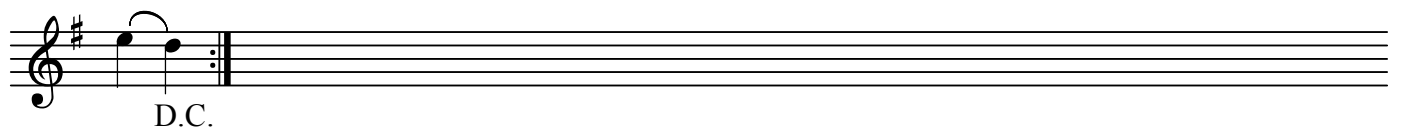
BK=3



BK=4



BK=5



5. GAVOTTO

BK=1

S2  
BK=2

Fine *p*

BK=3

*p*

BK=4

*p*

BK=5

D.C.

A

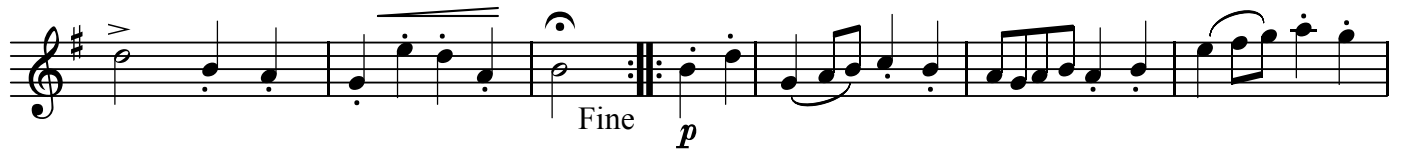
# 5. GAVOTTO

BK=1



Musical notation for BK=1, starting with a treble clef, a key signature of one sharp (F#), and a common time signature (C). The music begins with a forte (*f*) dynamic. The notation includes eighth and sixteenth notes, rests, and accents.

BK=2



Musical notation for BK=2, continuing from BK=1. It features a repeat sign followed by a *Fine* marking and a piano (*p*) dynamic.

BK=3



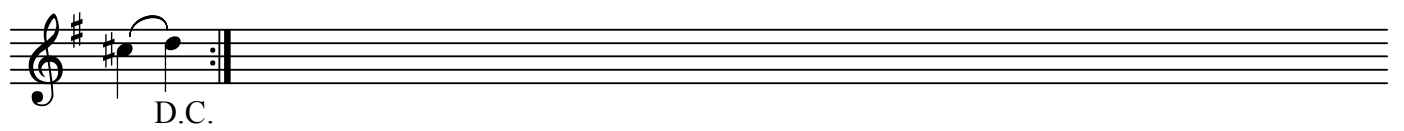
Musical notation for BK=3, featuring a piano (*p*) dynamic and various rhythmic patterns including eighth and sixteenth notes.

BK=4



Musical notation for BK=4, featuring a piano (*p*) dynamic and complex rhythmic patterns with many sixteenth notes.

BK=5



Musical notation for BK=5, ending with a double bar line and the instruction *D.C.* (Da Capo).

B

# 5. GAVOTTO

BK=1

Musical staff for BK=1, bass clef, key signature of one sharp (F#), common time (C). The staff contains six measures of music. The first measure starts with a bass clef, a key signature of one sharp, and a common time signature. The first note is a half note G2, followed by a quarter note G2. The second measure has a half note G2, followed by a quarter note G2. The third measure has a half note G2, followed by a quarter note G2. The fourth measure has a half note G2, followed by a quarter note G2. The fifth measure has a half note G2, followed by a quarter note G2. The sixth measure has a half note G2, followed by a quarter note G2. Dynamics include *f* and accents (>).

BK=2

Musical staff for BK=2, bass clef, key signature of one sharp (F#), common time (C). The staff contains six measures of music. The first measure has a half note G2, followed by a quarter note G2. The second measure has a half note G2, followed by a quarter note G2. The third measure has a half note G2, followed by a quarter note G2. The fourth measure has a half note G2, followed by a quarter note G2. The fifth measure has a half note G2, followed by a quarter note G2. The sixth measure has a half note G2, followed by a quarter note G2. Dynamics include *p* and the word "Fine" with a repeat sign.

BK=3

Musical staff for BK=3, bass clef, key signature of one sharp (F#), common time (C). The staff contains six measures of music. The first measure has a half note G2, followed by a quarter note G2. The second measure has a half note G2, followed by a quarter note G2. The third measure has a half note G2, followed by a quarter note G2. The fourth measure has a half note G2, followed by a quarter note G2. The fifth measure has a half note G2, followed by a quarter note G2. The sixth measure has a half note G2, followed by a quarter note G2. Dynamics include *p*.

BK=4

Musical staff for BK=4, bass clef, key signature of one sharp (F#), common time (C). The staff contains six measures of music. The first measure has a half note G2, followed by a quarter note G2. The second measure has a half note G2, followed by a quarter note G2. The third measure has a half note G2, followed by a quarter note G2. The fourth measure has a half note G2, followed by a quarter note G2. The fifth measure has a half note G2, followed by a quarter note G2. The sixth measure has a half note G2, followed by a quarter note G2. Dynamics include *p*.

BK=5

Musical staff for BK=5, bass clef, key signature of one sharp (F#), common time (C). The staff contains one measure of music. The first measure has a half note G2, followed by a quarter note G2. Dynamics include "D.C." (Da Capo).