

アルキーナ組曲
1. ENTREE

G. F. Handel

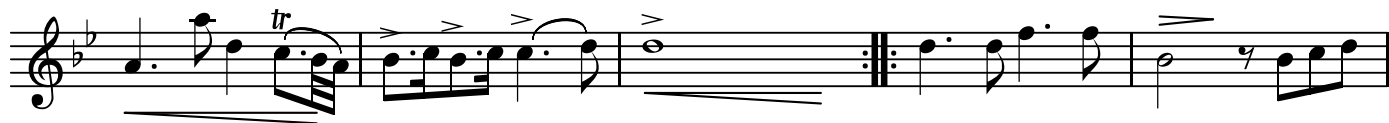
Grave

BK=1



Musical notation for BK=1, starting with a treble clef, a key signature of two flats (B-flat and E-flat), and a common time signature (C). The piece is marked "Grave". The notation includes a forte (*f*) dynamic marking at the beginning and a mezzo-forte (*mf*) dynamic marking towards the end. The melody features a trill (*tr*) on the second measure.

BK=2



Musical notation for BK=2, continuing the melody from BK=1. It includes a trill (*tr*) on the first measure and a repeat sign with first and second endings.

BK=3



Musical notation for BK=3, continuing the melody. It features a forte (*f*) dynamic marking.

BK=4



Musical notation for BK=4, continuing the melody. It features a forte (*f*) dynamic marking at the beginning, a piano (*p*) dynamic marking in the middle, and another forte (*f*) dynamic marking at the end.

BK=5

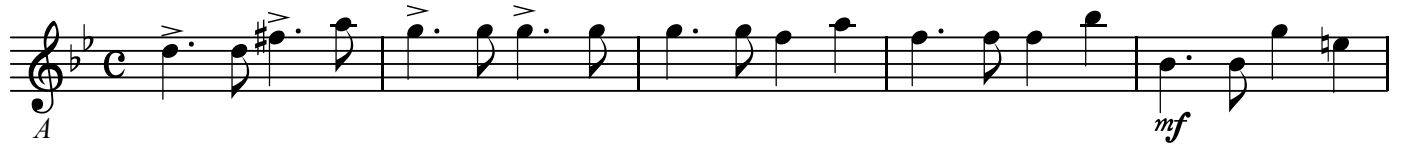


Musical notation for BK=5, concluding the piece. It features a first ending and a second ending, both marked with first and second endings.

アルキーナ組曲
1. ENTREE

G. F. Handel

BK=1



BK=2



BK=3



BK=4



BK=5



アルキーナ組曲
1. ENTREE

G. F. Handel

BK=1

First musical staff (BK=1) in bass clef, 3/4 time, B-flat major. It begins with a *B* dynamic marking and ends with an *mf* marking. The melody features several accents and slurs.

BK=2

Second musical staff (BK=2) in bass clef, 3/4 time, B-flat major. It contains a repeat sign with first and second endings.

BK=3

Third musical staff (BK=3) in bass clef, 3/4 time, B-flat major. It features a *f* dynamic marking and includes several accents and slurs.

BK=4

Fourth musical staff (BK=4) in bass clef, 3/4 time, B-flat major. It features a *p* dynamic marking followed by a *f* dynamic marking, with various slurs and accents.

BK=5

Fifth musical staff (BK=5) in bass clef, 3/4 time, B-flat major. It concludes with a first ending and a second ending, both leading to a final cadence.