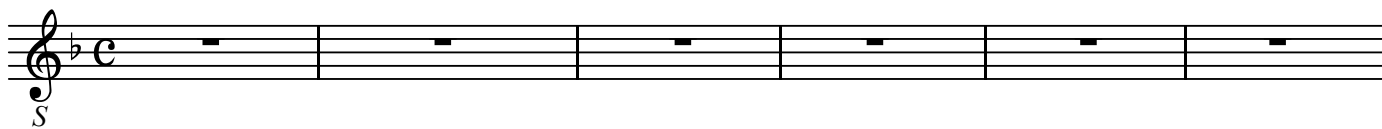


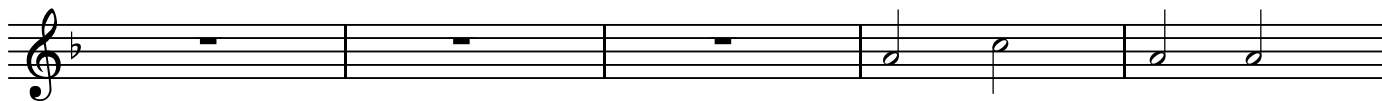
わが心は主をあがめ—マニフィカトによるフーガ BWV733

J.S.Bach

BK=1



BK=2



BK=3



BK=4



BK=5



BK=6



BK=7



BK=8



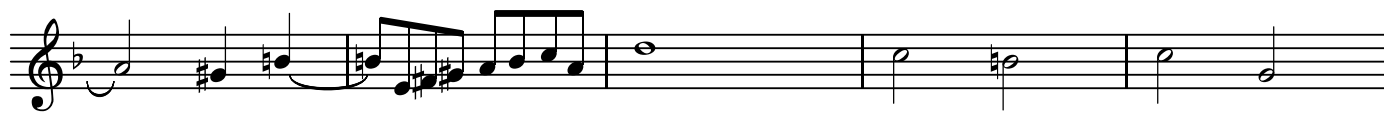
BK=9



BK=10



BK=11





BK=1



BK=2



BK=3



BK=4



BK=5



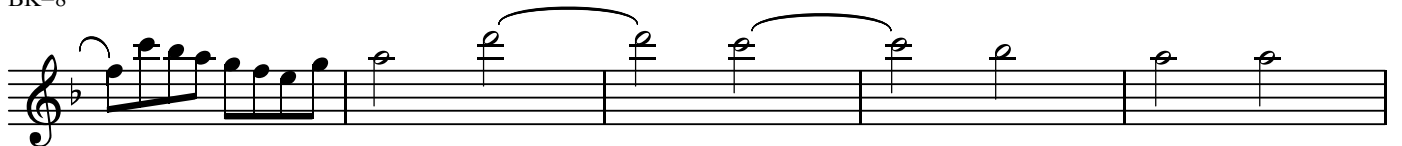
BK=6



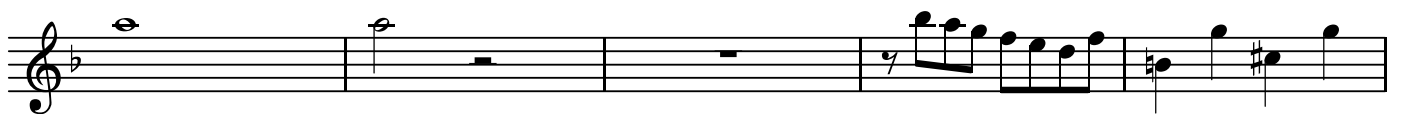
BK=7



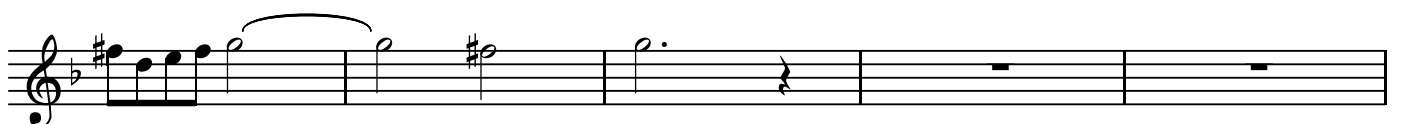
BK=8



BK=9



BK=10



BK=11



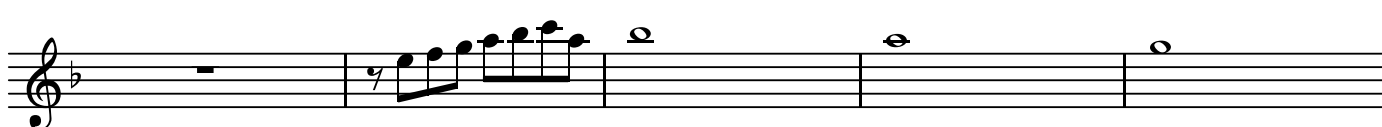
BK=12



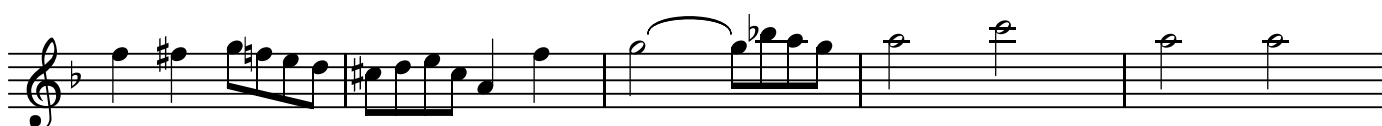
BK=13



BK=14



BK=15



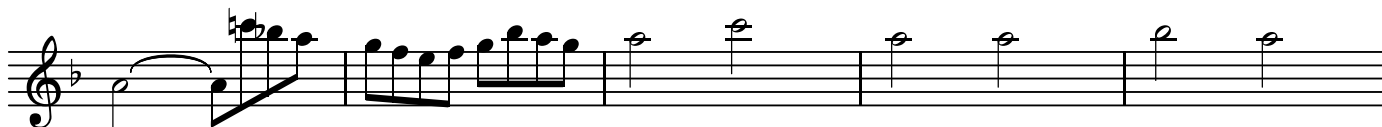
BK=16



BK=17



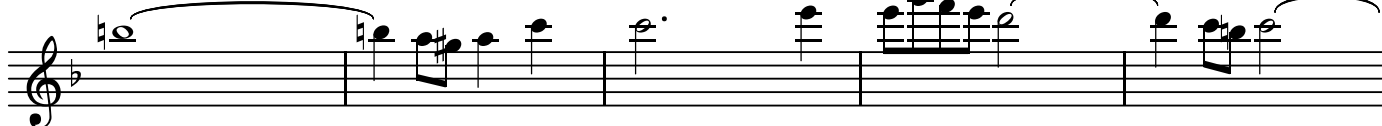
BK=18



BK=19



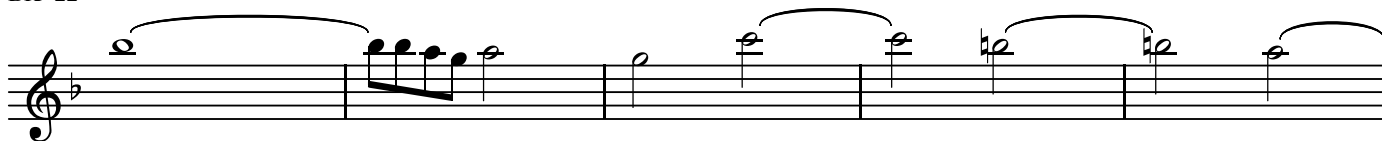
BK=20



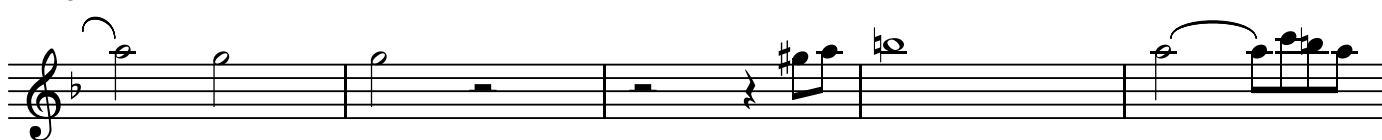
BK=21



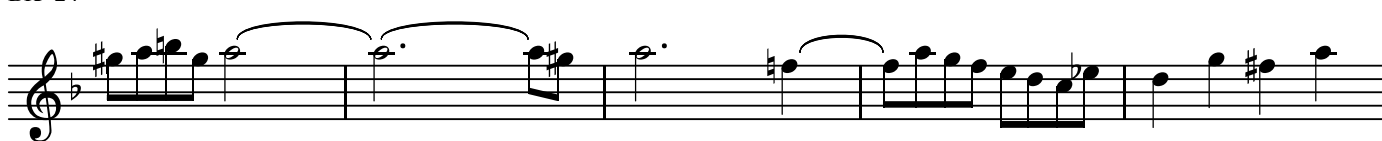
BK=22



BK=23



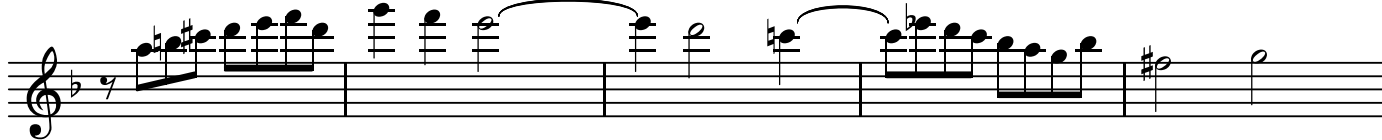
BK=24



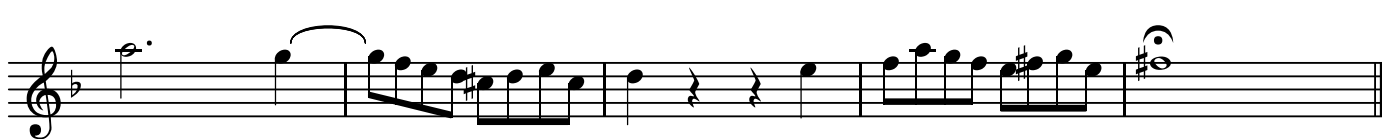
BK=25



BK=26



BK=27

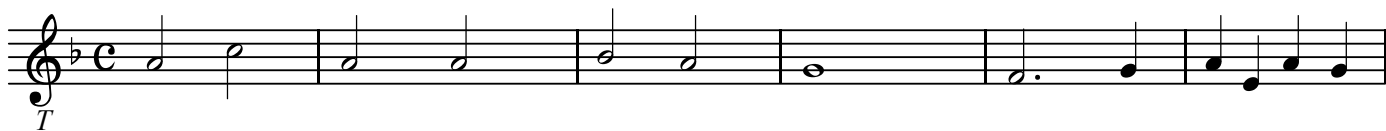


T

わが心は主をあがめ—マニフィカトによるフーガ BWV733

J.S.Bach

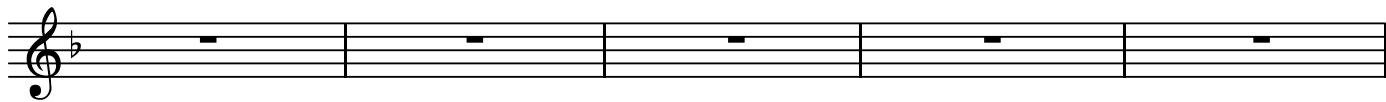
BK=1



BK=2



BK=3



BK=4



BK=5



BK=6



BK=7



BK=8



BK=9



BK=10



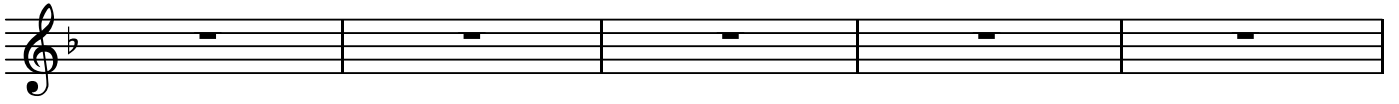
BK=11



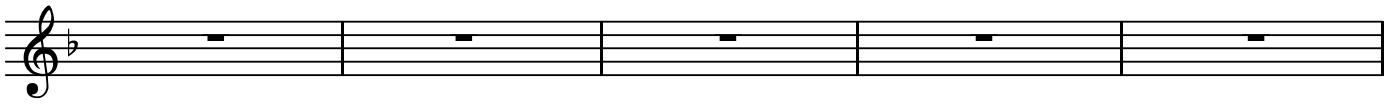
BK=12



BK=13



BK=14



BK=15



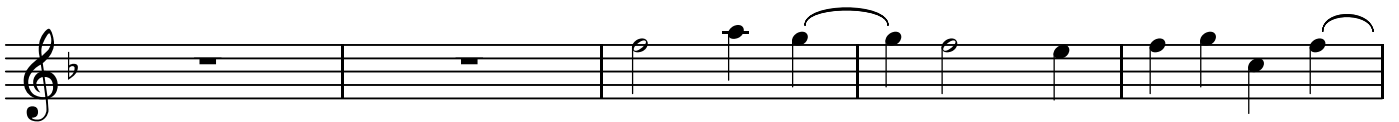
BK=16



BK=17



BK=18



BK=19



BK=20





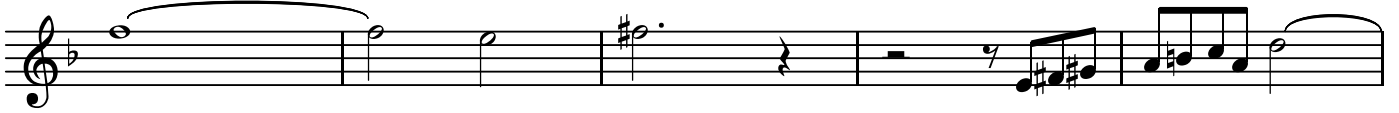
BK=21



BK=22



BK=23



BK=24



BK=25



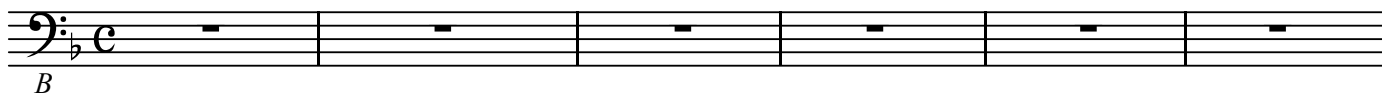
BK=26



BK=27



BK=1



BK=2



BK=3



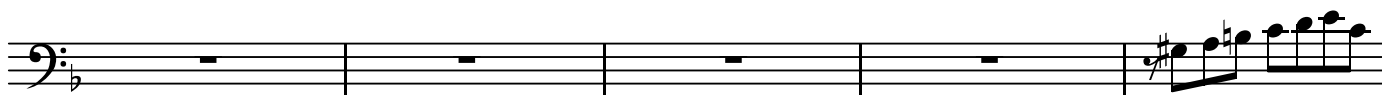
BK=4



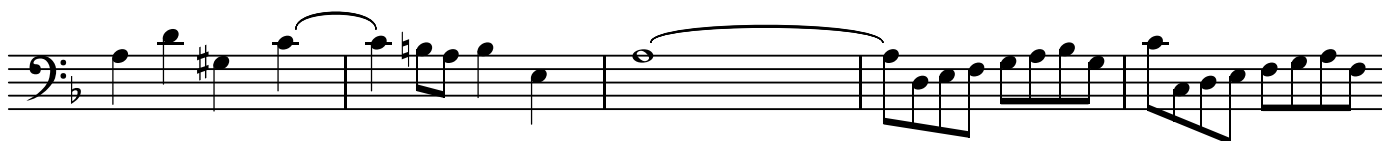
BK=5



BK=6



BK=7



BK=8



BK=9



BK=10



BK=11



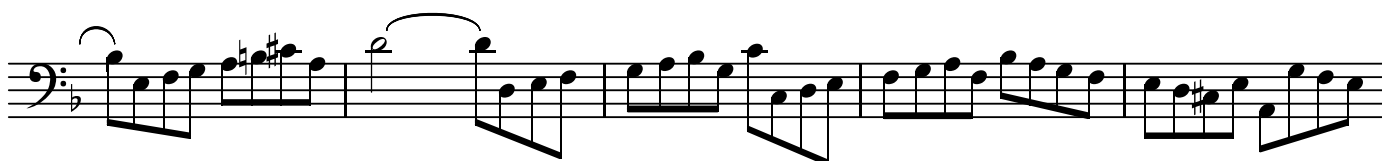
BK=12



BK=13



BK=14



BK=15



BK=16



BK=17



BK=18



BK=19



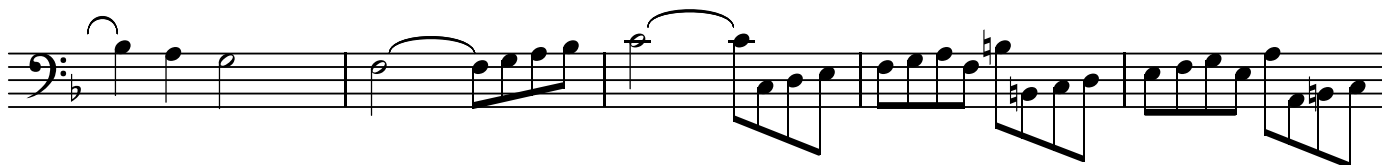
BK=20



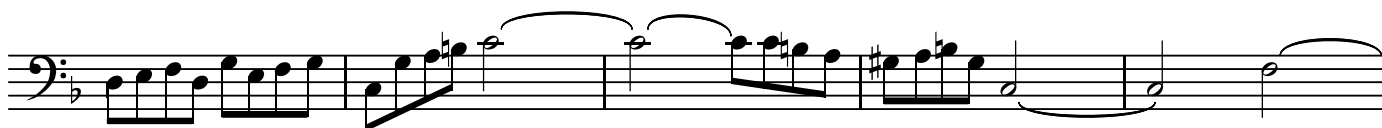
BK=21



BK=22



BK=23



BK=24



BK=25



BK=26



BK=27

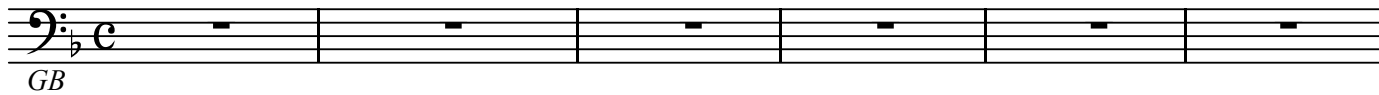


GB

わが心は主をあがめ—マニフィカトによるフーガ BWV733

J.S.Bach

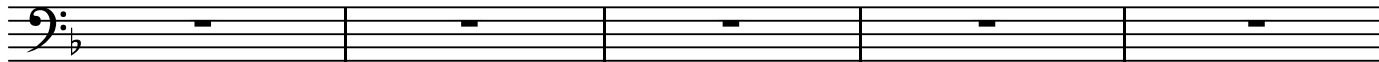
BK=1



GB

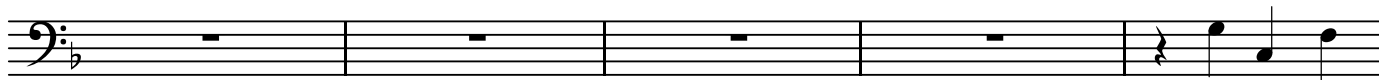
Musical staff for BK=1, showing a bass clef, a flat key signature, and a common time signature. The staff contains six measures of whole rests.

BK=2



Musical staff for BK=2, showing a bass clef, a flat key signature, and a common time signature. The staff contains six measures of whole rests.

BK=3



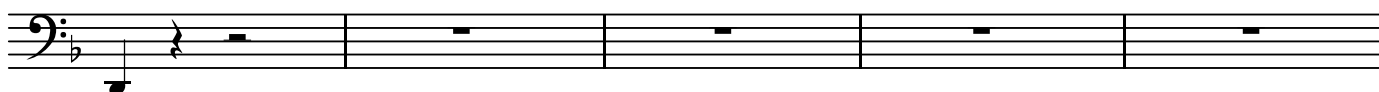
Musical staff for BK=3, showing a bass clef, a flat key signature, and a common time signature. The staff contains six measures of whole rests, followed by a quarter note G, a quarter note A, and a quarter note B in the final measure.

BK=4



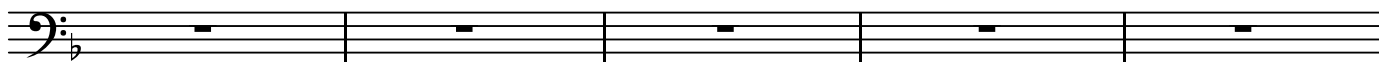
Musical staff for BK=4, showing a bass clef, a flat key signature, and a common time signature. The staff contains six measures: a quarter note G, a quarter rest, a whole rest, a quarter note A, a quarter rest, and a quarter note B.

BK=5



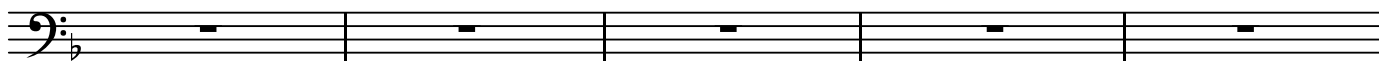
Musical staff for BK=5, showing a bass clef, a flat key signature, and a common time signature. The staff contains six measures: a quarter note G, a quarter rest, a whole rest, a whole rest, a whole rest, and a whole rest.

BK=6



Musical staff for BK=6, showing a bass clef, a flat key signature, and a common time signature. The staff contains six measures of whole rests.

BK=7



Musical staff for BK=7, showing a bass clef, a flat key signature, and a common time signature. The staff contains six measures of whole rests.

BK=8



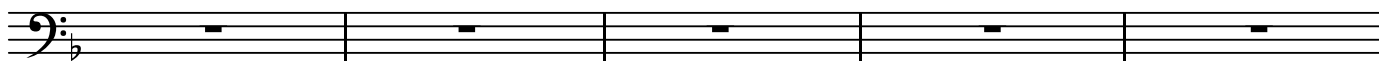
Musical staff for BK=8, showing a bass clef, a flat key signature, and a common time signature. The staff contains six measures: a whole rest, a whole rest, a half note G, a half note A, a half note B, and a sixteenth note G.

BK=9



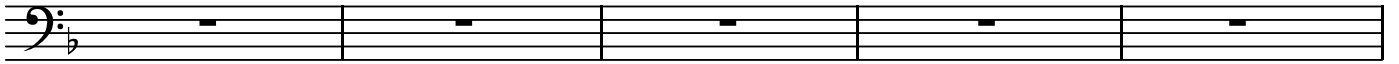
Musical staff for BK=9, showing a bass clef, a flat key signature, and a common time signature. The staff contains six measures: a whole rest, a half note G, a whole rest, a whole rest, a whole rest, and a whole rest.

BK=10

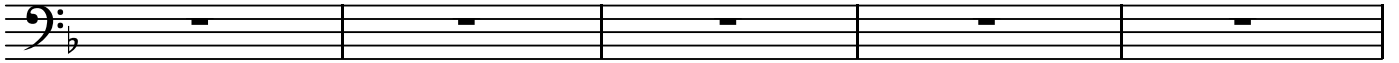


Musical staff for BK=10, showing a bass clef, a flat key signature, and a common time signature. The staff contains six measures of whole rests.

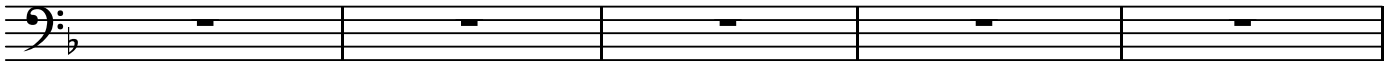
BK=11



BK=12



BK=13



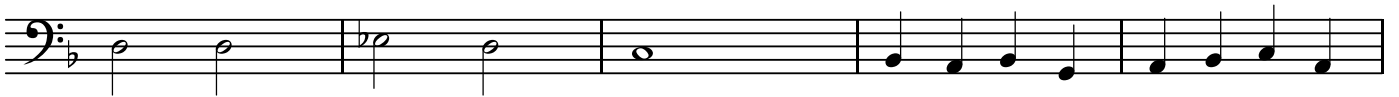
BK=14



BK=15



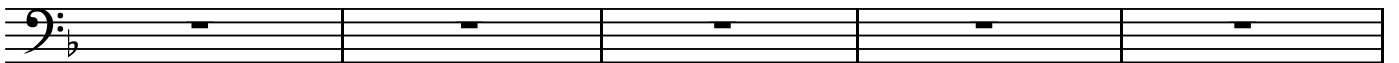
BK=16



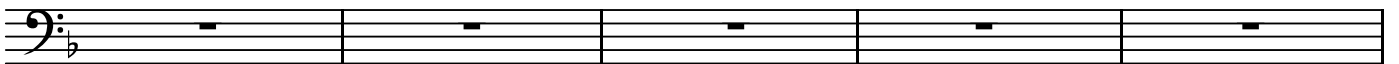
BK=17



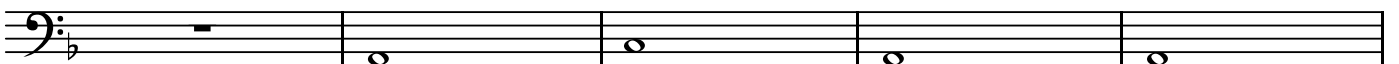
BK=18



BK=19



BK=20



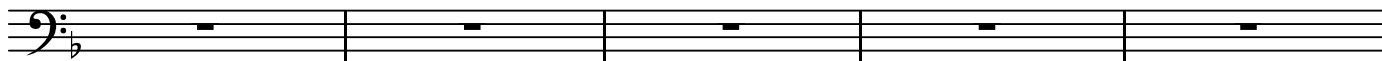
BK=21



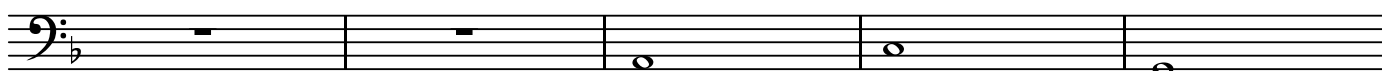
BK=22



BK=23



BK=24



BK=25



BK=26



BK=27

