



BK=11



BK=12



BK=13



A1

来たれ、創り主にて精霊なる神よ BWV667

J.S.Bach

BK=1



Musical staff for BK=1, starting with a treble clef, a common time signature (C), and a 12/8 time signature. The staff contains a series of eighth and sixteenth notes, some beamed together, and rests.

BK=2



Musical staff for BK=2, continuing the melodic line with various rhythmic patterns and accidentals.

BK=3



Musical staff for BK=3, featuring a mix of eighth and sixteenth notes with slurs and accents.

BK=4



Musical staff for BK=4, showing a continuation of the melodic development with some rests.

BK=5



Musical staff for BK=5, characterized by dense sixteenth-note passages and slurs.

BK=6



Musical staff for BK=6, featuring a more sparse melodic line with dotted rhythms and rests.

BK=7



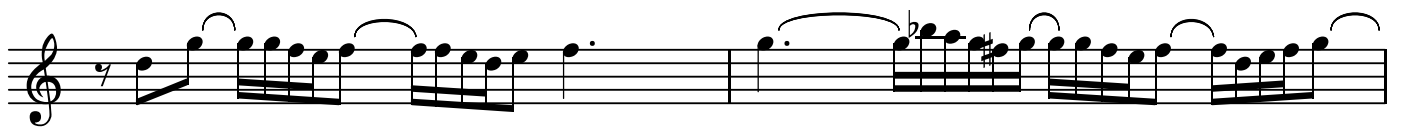
Musical staff for BK=7, showing a mix of dotted rhythms and eighth-note patterns.

BK=8



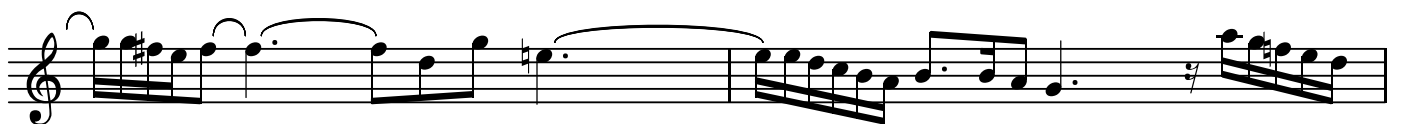
Musical staff for BK=8, featuring a series of eighth-note runs and slurs.

BK=9



Musical staff for BK=9, showing a continuation of the melodic line with various rhythmic patterns.

BK=10

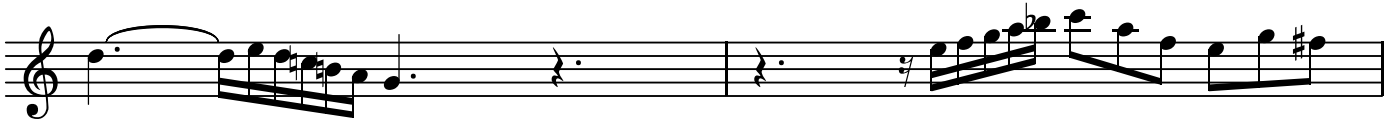


Musical staff for BK=10, concluding the piece with a final melodic phrase and a double bar line.

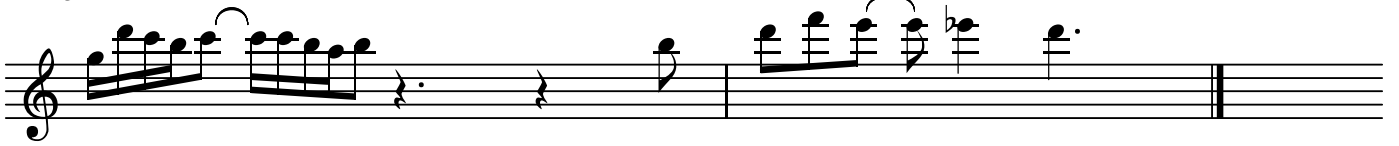
BK=11



BK=12



BK=13



BK=1



Musical staff for BK=1, starting with a treble clef, a common time signature, and a 12/8 time signature. The staff contains a series of eighth and sixteenth notes, some with slurs and accents.

BK=2



Musical staff for BK=2, continuing the melodic line with various rhythmic patterns and slurs.

BK=3



Musical staff for BK=3, featuring a mix of eighth and sixteenth notes with slurs.

BK=4



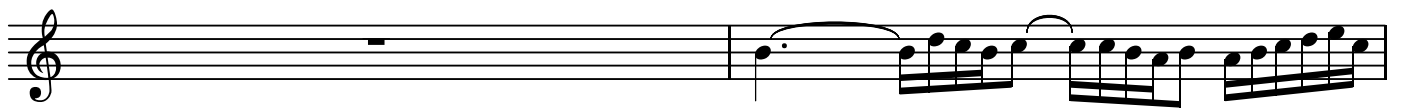
Musical staff for BK=4, showing a continuation of the melodic development with slurs and accents.

BK=5



Musical staff for BK=5, featuring a series of sixteenth notes with slurs.

BK=6



Musical staff for BK=6, starting with a whole rest followed by a melodic phrase.

BK=7



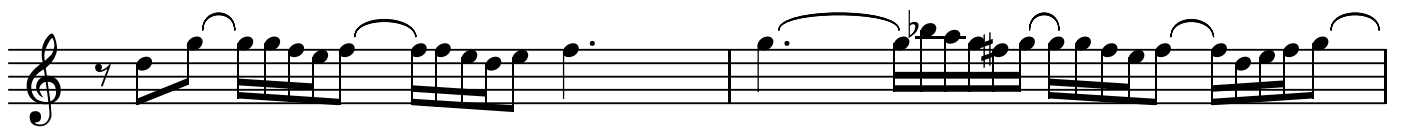
Musical staff for BK=7, featuring a melodic phrase with slurs and accents.

BK=8



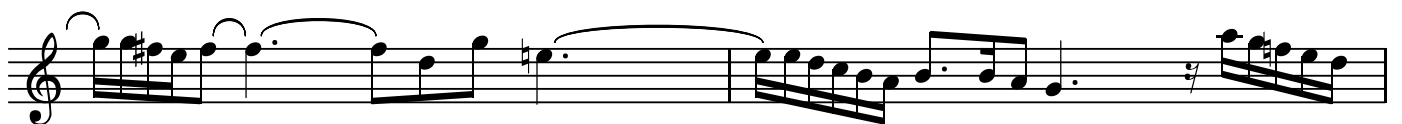
Musical staff for BK=8, showing a melodic phrase with slurs and accents.

BK=9



Musical staff for BK=9, featuring a melodic phrase with slurs and accents.

BK=10

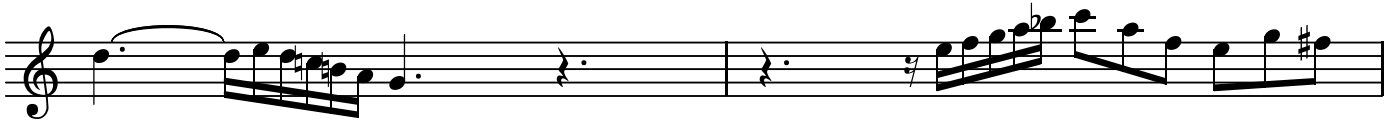


Musical staff for BK=10, concluding the piece with a melodic phrase and a final cadence.

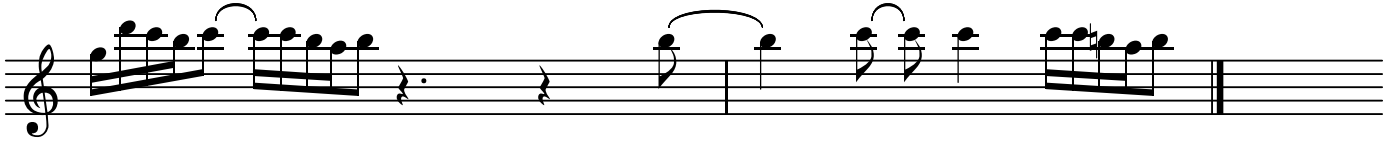
BK=11



BK=12



BK=13



T

来たれ、創り主にて精霊なる神よ BWV667

J.S.Bach

BK=1



BK=2



BK=3



BK=4



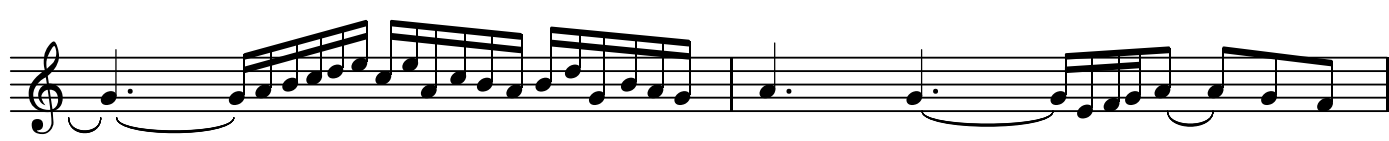
BK=5



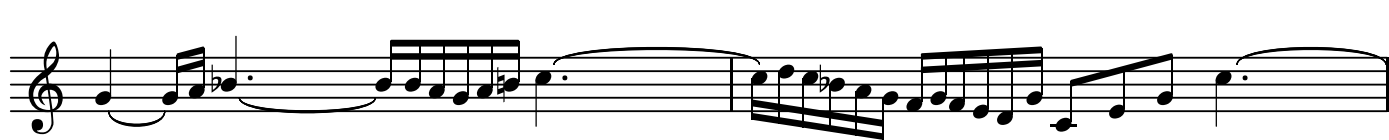
BK=6



BK=7



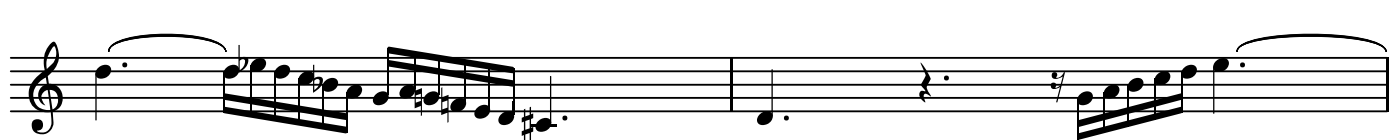
BK=8



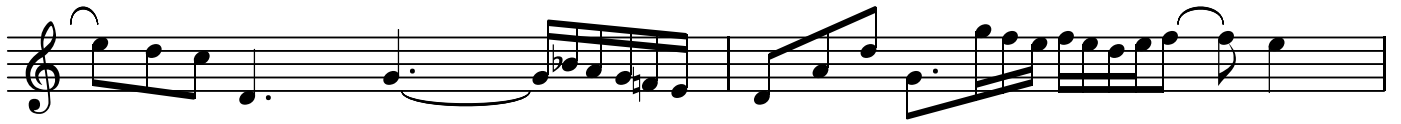
BK=9



BK=10



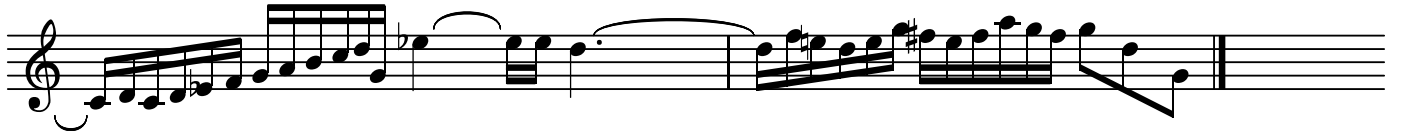
BK=11



BK=12



BK=13



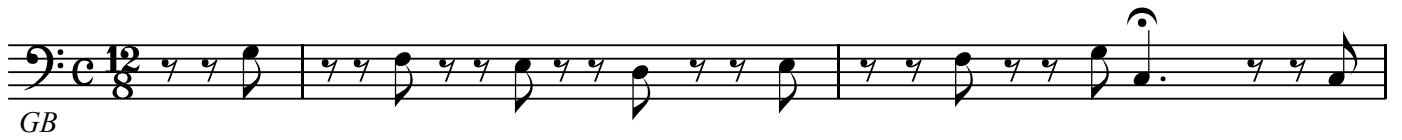


GB

来たれ、創り主にて精霊なる神よ BWV667

J.S.Bach

BK=1



GB

Musical staff for BK=1, showing a bass clef, common time signature, and a series of eighth notes.

BK=2



Musical staff for BK=2, showing a bass clef and a series of eighth notes.

BK=3



Musical staff for BK=3, showing a bass clef and a series of eighth notes.

BK=4



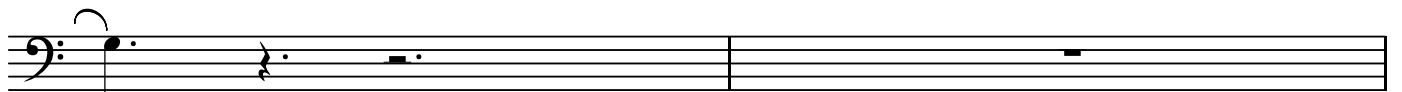
Musical staff for BK=4, showing a bass clef and a series of eighth notes.

BK=5



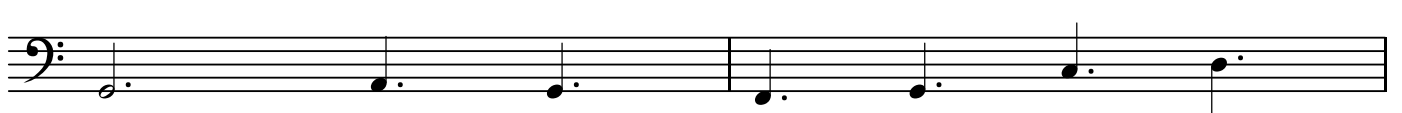
Musical staff for BK=5, showing a bass clef and a series of eighth notes.

BK=6



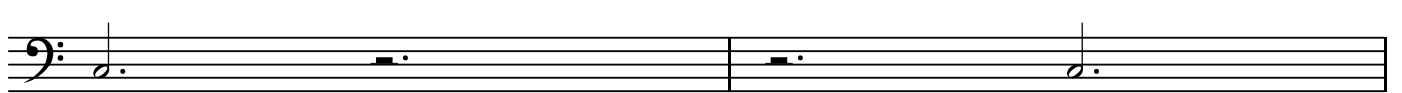
Musical staff for BK=6, showing a bass clef and a series of eighth notes.

BK=7



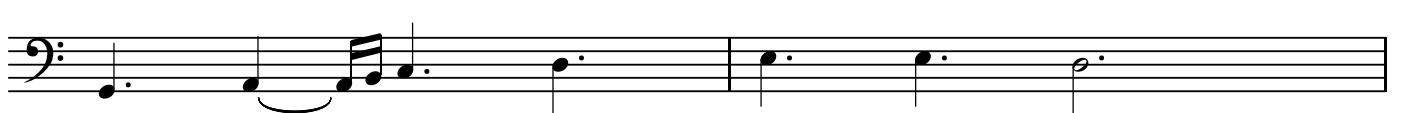
Musical staff for BK=7, showing a bass clef and a series of eighth notes.

BK=8



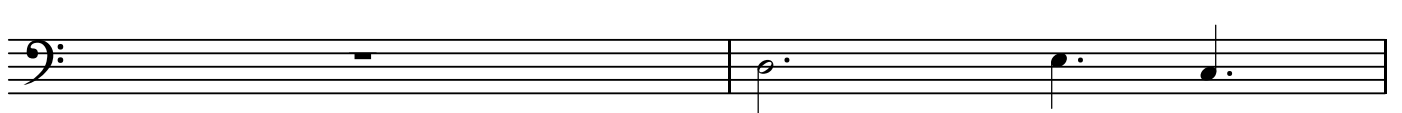
Musical staff for BK=8, showing a bass clef and a series of eighth notes.

BK=9



Musical staff for BK=9, showing a bass clef and a series of eighth notes.

BK=10



Musical staff for BK=10, showing a bass clef and a series of eighth notes.

