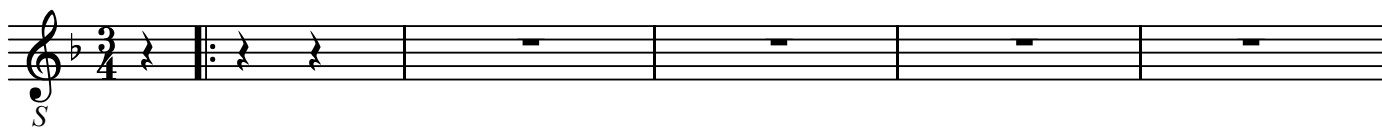
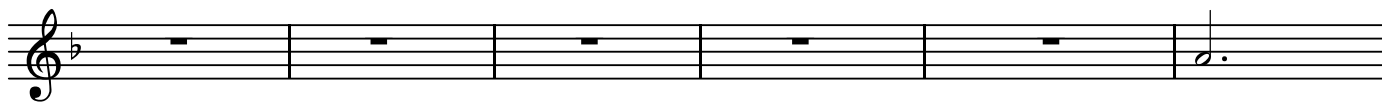


BK=1



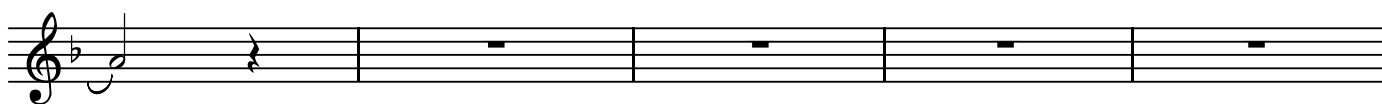
BK=2



BK=3



BK=4



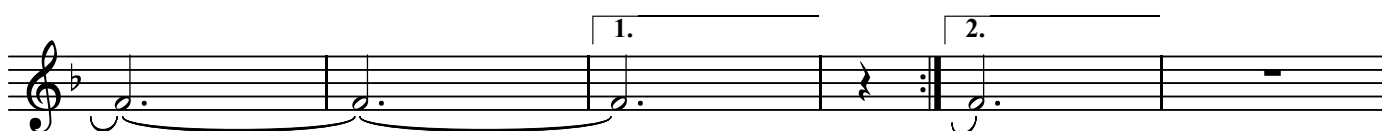
BK=5



BK=6



BK=7



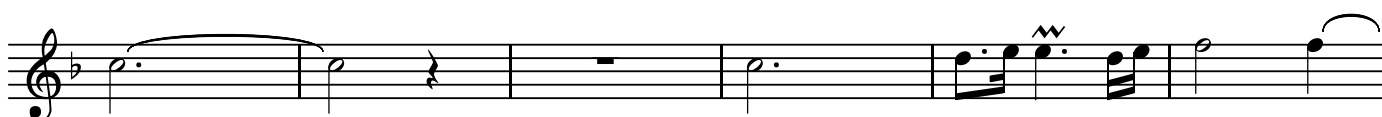
BK=8



BK=9



BK=10



BK=11



装え、おお、愛する魂よ BWV654

J.S.Bach

BK=1

Musical staff BK=1, starting with a treble clef, a key signature of one flat (B-flat), and a 3/4 time signature. The staff contains a series of eighth and sixteenth notes, some with accents and slurs. A dynamic marking 'A' is placed below the staff.

BK=2

Musical staff BK=2, continuing the melody with eighth and sixteenth notes and slurs.

BK=3

Musical staff BK=3, featuring eighth and sixteenth notes with slurs and a key signature change to two flats (B-flat and E-flat).

BK=4

Musical staff BK=4, continuing the melody with eighth and sixteenth notes and slurs.

BK=5

Musical staff BK=5, featuring eighth and sixteenth notes with slurs and a key signature change to one flat (B-flat).

BK=6

Musical staff BK=6, continuing the melody with eighth and sixteenth notes and slurs.

BK=7

Musical staff BK=7, featuring eighth and sixteenth notes with slurs and a key signature change to two flats (B-flat and E-flat). It includes first and second endings marked '1.' and '2.'.

BK=8

Musical staff BK=8, continuing the melody with eighth and sixteenth notes and slurs.

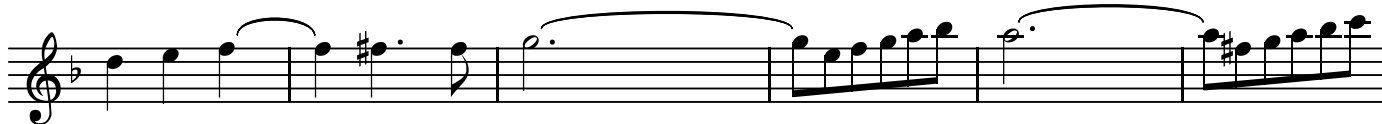
BK=9

Musical staff BK=9, featuring eighth and sixteenth notes with slurs and a key signature change to one flat (B-flat).

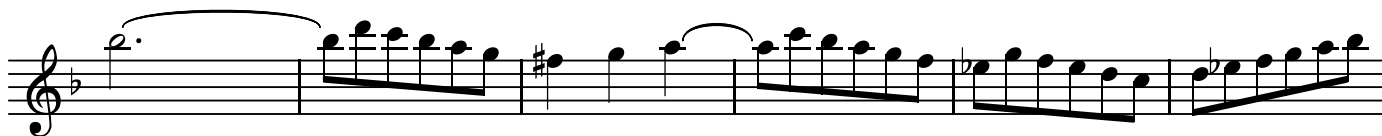
BK=10

Musical staff BK=10, continuing the melody with eighth and sixteenth notes and slurs.

BK=11



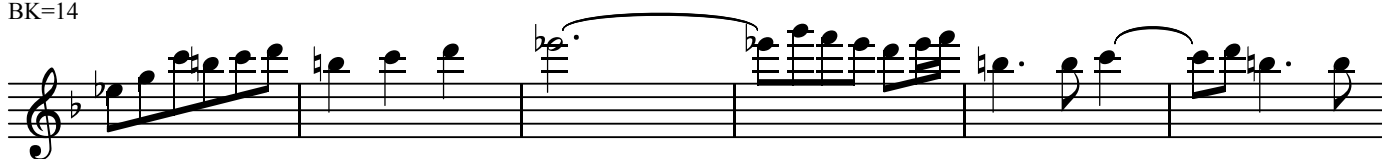
BK=12



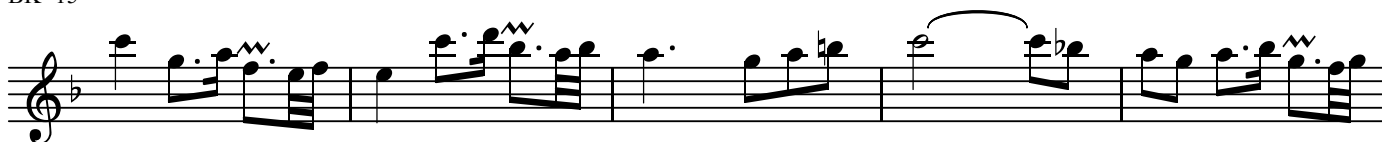
BK=13



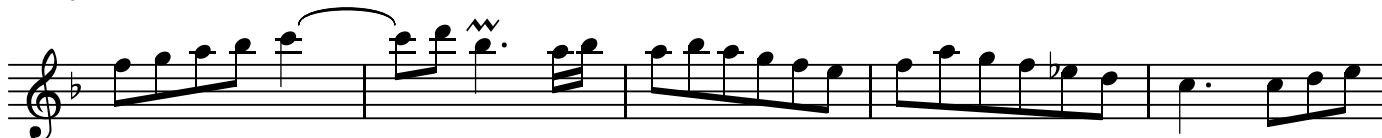
BK=14



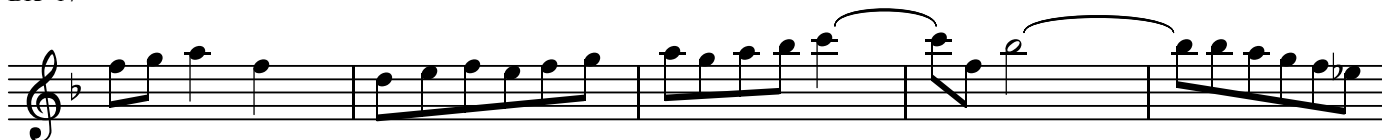
BK=15



BK=16



BK=17



BK=18

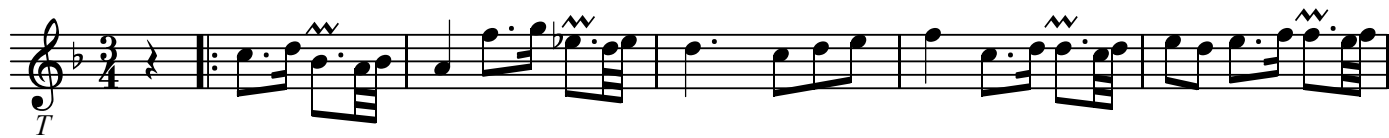


T

装え、おお、愛する魂よ BWV654

J.S.Bach

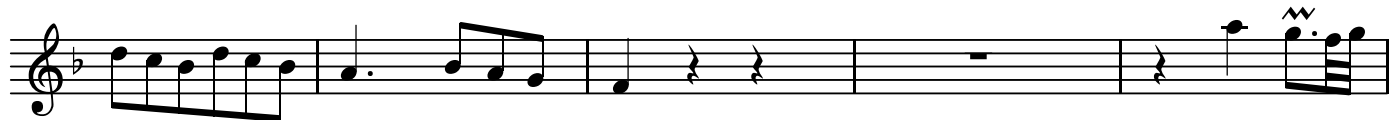
BK=1



BK=2



BK=3



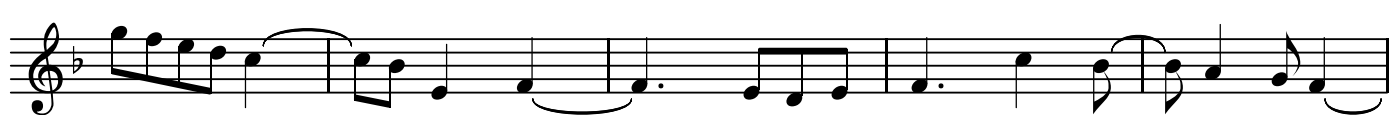
BK=4



BK=5



BK=6



BK=7



BK=8



BK=9



BK=10



BK=11



BK=12



BK=13



BK=14



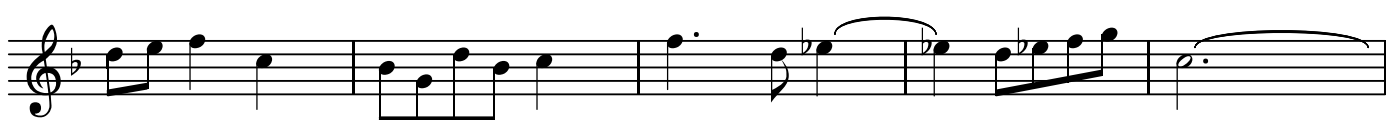
BK=15



BK=16



BK=17



BK=18



GB

装え、おお、愛する魂よ BWV654

J.S.Bach

BK=1



Musical notation for BK=1, featuring a bass clef, a key signature of one flat (B-flat), and a 3/4 time signature. The notation includes a repeat sign at the beginning and several notes with a wavy line above them, indicating a trill or tremolo effect.

BK=2



Musical notation for BK=2, featuring a bass clef, a key signature of one flat, and a 3/4 time signature. The notation includes a slur over a group of notes and a sharp sign (#) on a note in the final measure.

BK=3



Musical notation for BK=3, featuring a bass clef, a key signature of one flat, and a 3/4 time signature. The notation includes a slur over a group of notes.

BK=4



Musical notation for BK=4, featuring a bass clef, a key signature of one flat, and a 3/4 time signature. The notation includes a slur over a group of notes.

BK=5



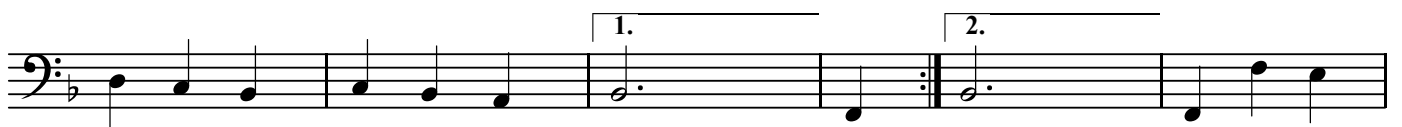
Musical notation for BK=5, featuring a bass clef, a key signature of one flat, and a 3/4 time signature. The notation includes a slur over a group of notes and a sharp sign (#) on a note in the final measure.

BK=6



Musical notation for BK=6, featuring a bass clef, a key signature of one flat, and a 3/4 time signature. The notation includes a slur over a group of notes.

BK=7



Musical notation for BK=7, featuring a bass clef, a key signature of one flat, and a 3/4 time signature. The notation includes first and second endings, marked with '1.' and '2.' above the notes.

BK=8



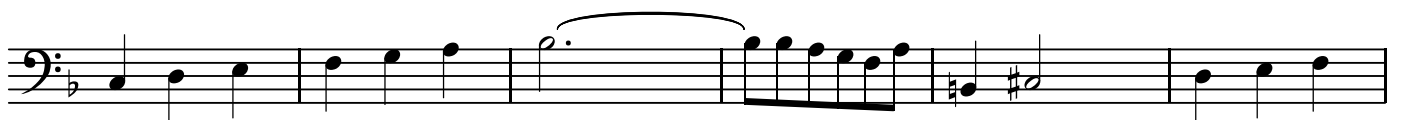
Musical notation for BK=8, featuring a bass clef, a key signature of one flat, and a 3/4 time signature. The notation includes a sharp sign (#) on a note in the final measure.

BK=9



Musical notation for BK=9, featuring a bass clef, a key signature of one flat, and a 3/4 time signature. The notation includes a slur over a group of notes and a sharp sign (#) on a note in the final measure.

BK=10



Musical notation for BK=10, featuring a bass clef, a key signature of one flat, and a 3/4 time signature. The notation includes a slur over a group of notes and a sharp sign (#) on a note in the final measure.

