

BK=1



BK=2



BK=3



BK=4



BK=5



BK=6



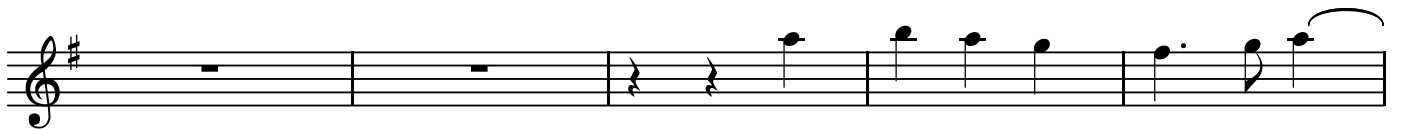
BK=7



BK=8



BK=9



BK=10



BK=11



BK=12



BK=13



BK=14



BK=15



BK=16



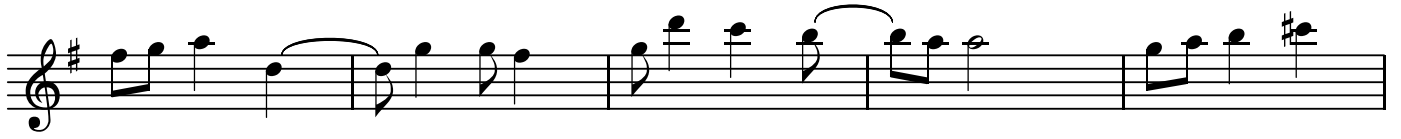
BK=17



BK=1



BK=2



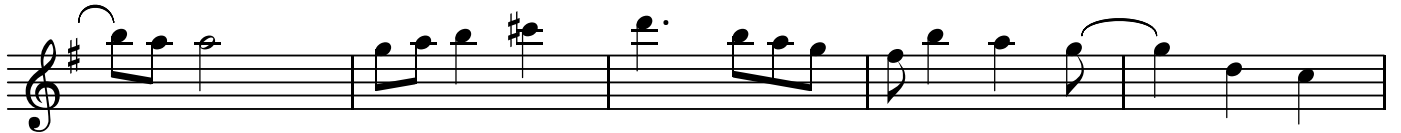
BK=3



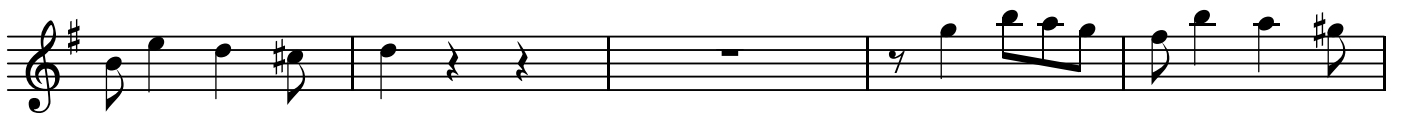
BK=4



BK=5



BK=6



BK=7



BK=8



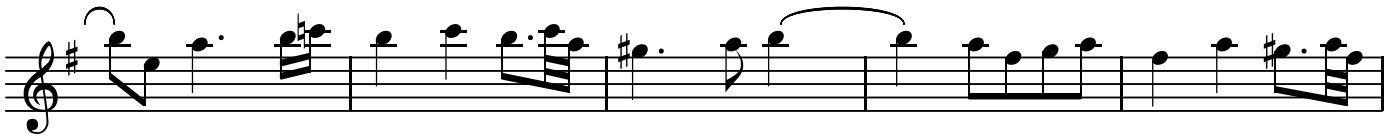
BK=9



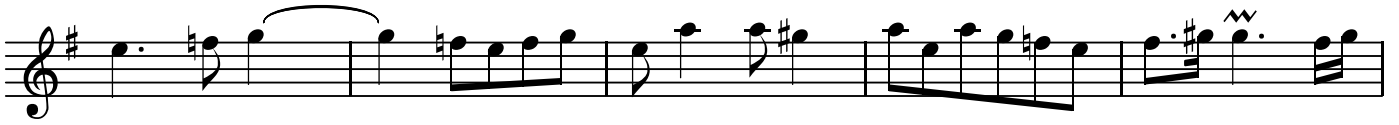
BK=10



BK=11



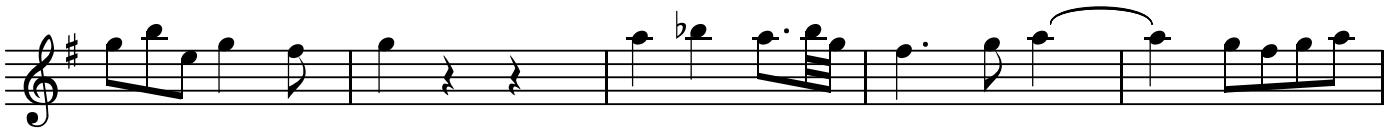
BK=12



BK=13



BK=14



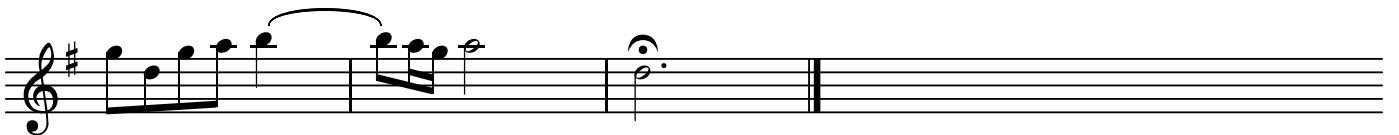
BK=15



BK=16



BK=17



T

バビロンの流れのほとりに BWV653

J.S.Bach

BK=1



BK=2



BK=3



BK=4



BK=5



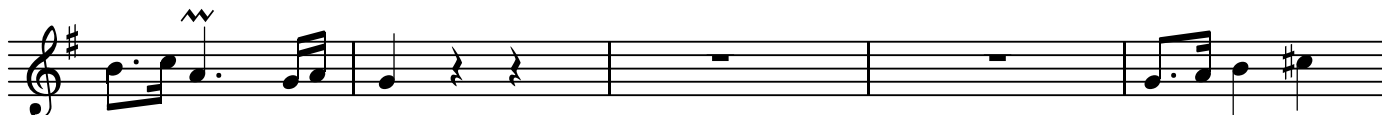
BK=6



BK=7



BK=8



BK=9



BK=10





GB

バビロンの流れのほとりに BWV653

J.S.Bach

BK=1



GB

Musical notation for BK=1, starting with a bass clef, a key signature of one sharp (F#), and a 3/4 time signature. The notation includes a series of eighth and quarter notes, with a slur over the final two notes.

BK=2



Musical notation for BK=2, continuing the piece with eighth and quarter notes, including a slur over the first two notes.

BK=3



Musical notation for BK=3, featuring a mix of eighth and quarter notes, with a half note at the end.

BK=4



Musical notation for BK=4, including eighth and quarter notes with a slur over a group of notes.

BK=5



Musical notation for BK=5, consisting of eighth and quarter notes, ending with a half note.

BK=6



Musical notation for BK=6, featuring eighth and quarter notes with various accidentals.

BK=7



Musical notation for BK=7, including eighth and quarter notes, with a slur over the final two notes.

BK=8



Musical notation for BK=8, featuring eighth and quarter notes, with a slur over the first two notes.

BK=9



Musical notation for BK=9, consisting of eighth and quarter notes with various accidentals.

BK=10



Musical notation for BK=10, featuring eighth and quarter notes, ending with a half note.

