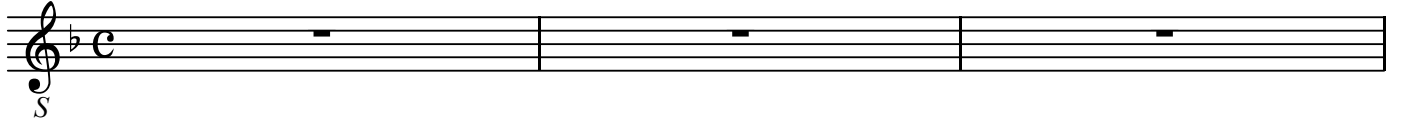


17のコーラル編曲から
「来たれ、精霊、主なる神よ」による幻想曲 BWV651

J.S.Bach

BK=1



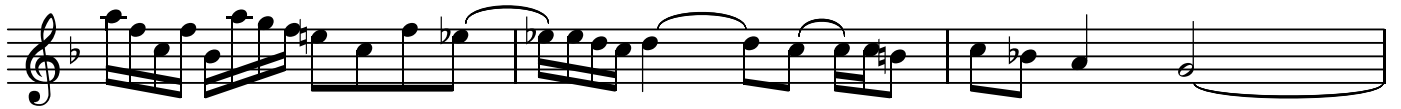
BK=2



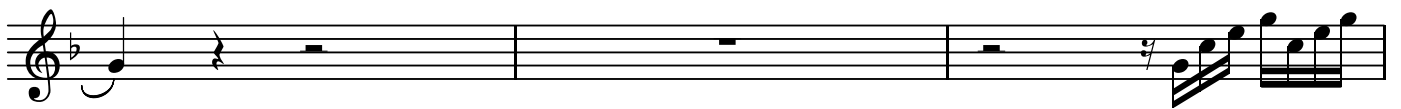
BK=3



BK=4



BK=5



BK=6



BK=7



BK=8



BK=9



BK=10



BK=11



BK=12



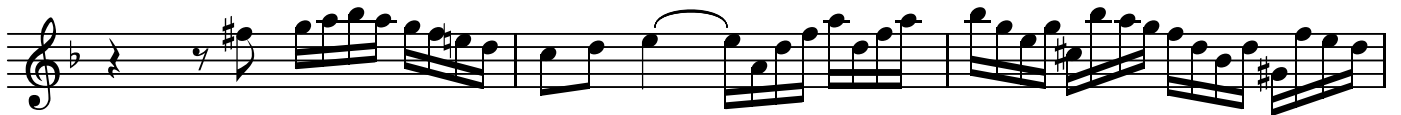
BK=13



BK=14



BK=15



BK=16



BK=17



BK=18



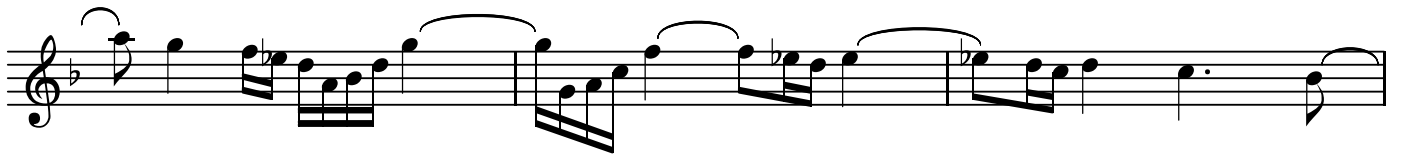
BK=19



BK=20



BK=21



BK=22



BK=23



BK=24



BK=25



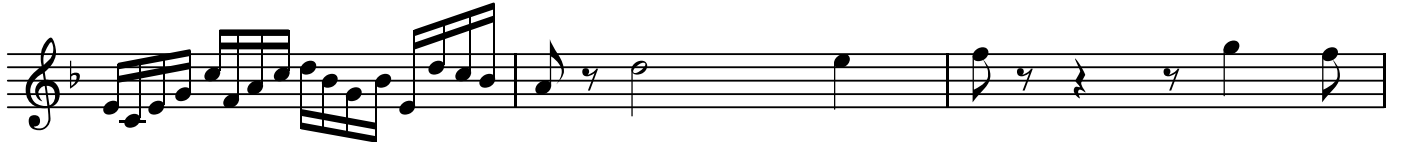
BK=26



BK=27



BK=28



BK=29



BK=30



BK=31



BK=32



BK=33



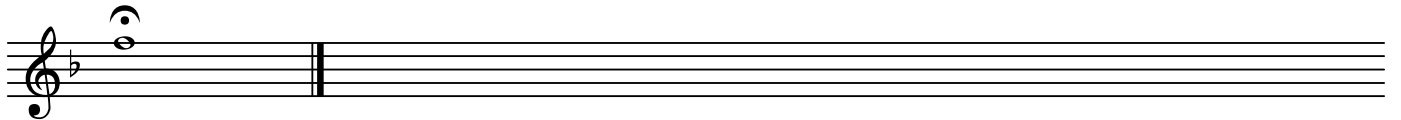
BK=34



BK=35



BK=36



17のコーラル編曲から
「来たれ、精霊、主なる神よ」による幻想曲 BWV651

J.S.Bach

BK=1

Musical staff BK=1, starting with a treble clef, a key signature of one flat (B-flat), and a common time signature (C). The staff contains a series of eighth and sixteenth notes, including a prominent sixteenth-note triplet. A dynamic marking 'A' is placed below the first few notes.

BK=2

Musical staff BK=2, continuing the melody with eighth and sixteenth notes and some rests.

BK=3

Musical staff BK=3, featuring a mix of eighth and sixteenth notes with some longer note values.

BK=4

Musical staff BK=4, showing a continuation of the melodic line with various rhythmic values.

BK=5

Musical staff BK=5, containing a series of sixteenth-note runs and eighth notes.

BK=6

Musical staff BK=6, featuring a complex rhythmic pattern with many sixteenth notes.

BK=7

Musical staff BK=7, showing a more melodic passage with eighth and sixteenth notes.

BK=8

Musical staff BK=8, containing a series of eighth notes and a final sixteenth-note triplet.

BK=9

Musical staff BK=9, featuring a melodic line with eighth and sixteenth notes.

BK=10

Musical staff BK=10, starting with a few eighth notes, a whole rest, and then a sixteenth-note triplet.

BK=11



BK=12



BK=13



BK=14



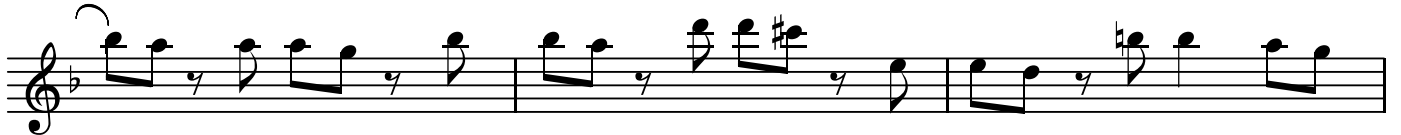
BK=15



BK=16



BK=17



BK=18



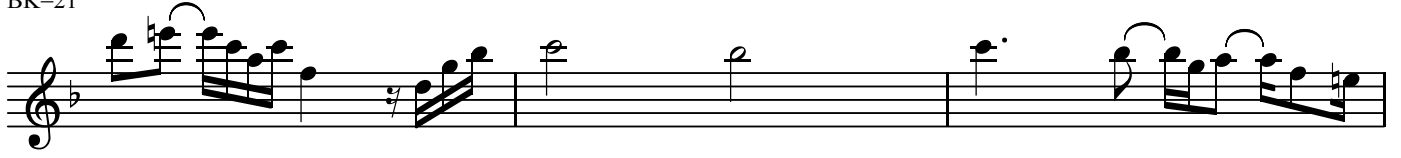
BK=19



BK=20



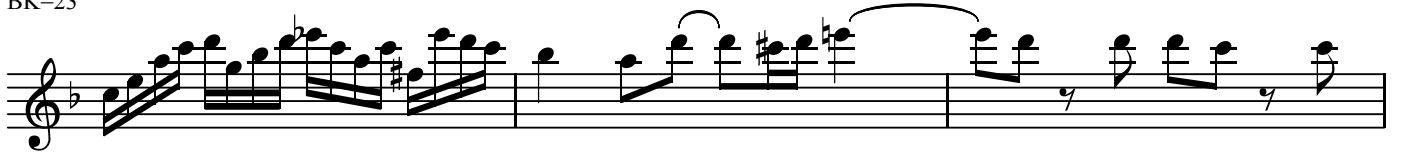
BK=21



BK=22



BK=23



BK=24



BK=25



BK=26



BK=27



BK=28



BK=29



BK=30



BK=31



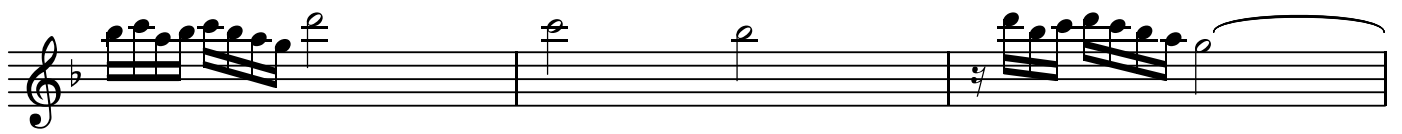
BK=32



BK=33



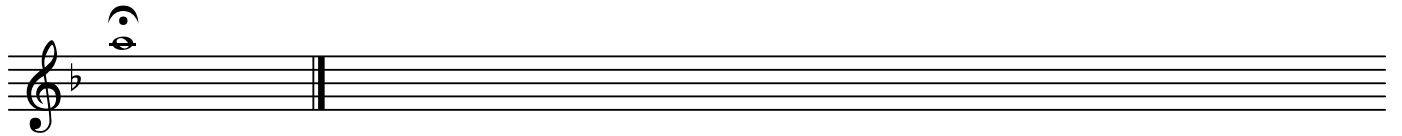
BK=34



BK=35



BK=36



17のコーラル編曲から
「来たれ、精霊、主なる神よ」による幻想曲 BWV651

J.S.Bach

BK=1



BK=2



BK=3



BK=4



BK=5



BK=6



BK=7



BK=8



BK=9



BK=10



BK=11



BK=12



BK=13



BK=14



BK=15



BK=16



BK=17



BK=18



BK=19



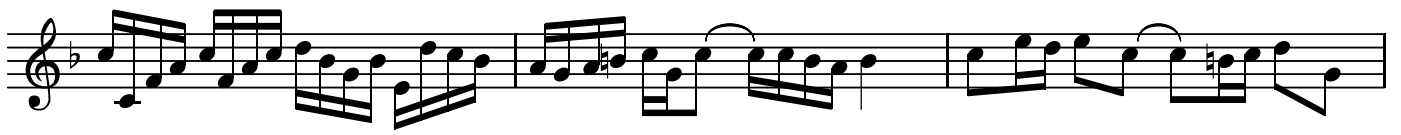
BK=20



BK=21



BK=22



BK=23



BK=24



BK=25



BK=26



BK=27



BK=28



BK=29



BK=30



BK=31



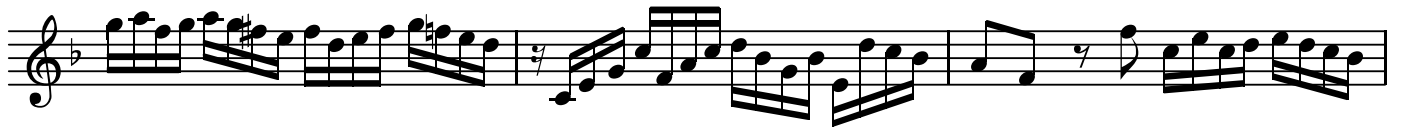
BK=32



BK=33



BK=34



BK=35



BK=36



GB

17のコラール編曲から
「来たれ、精霊、主なる神よ」による幻想曲 BWV651

J.S.Bach

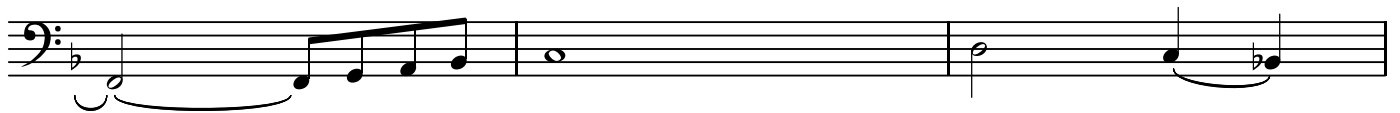
BK=1



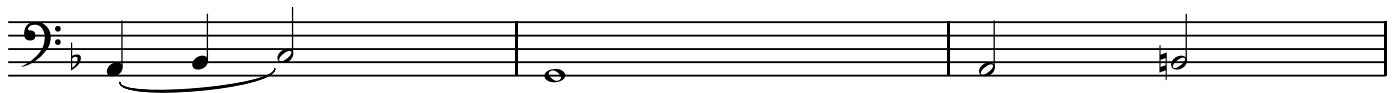
BK=2



BK=3



BK=4



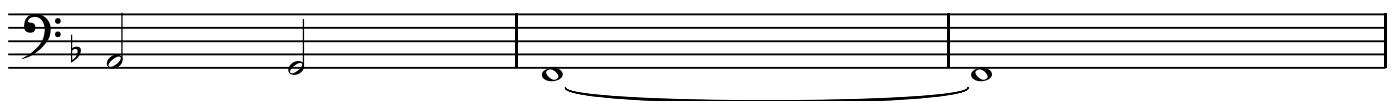
BK=5



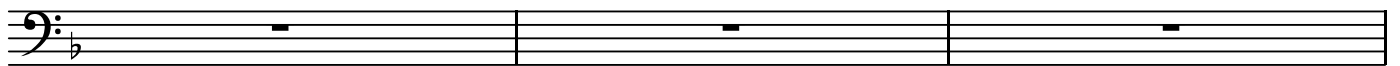
BK=6



BK=7



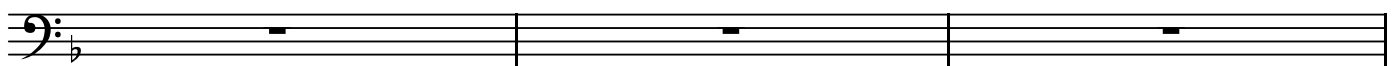
BK=8



BK=9



BK=10



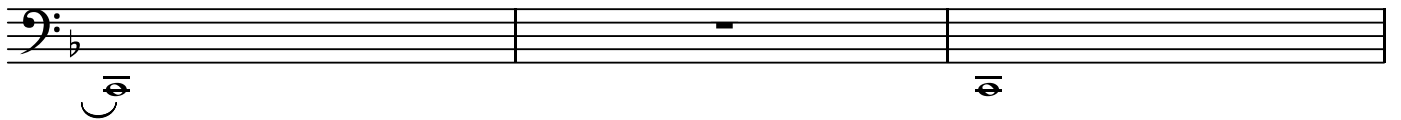
BK=11



BK=12



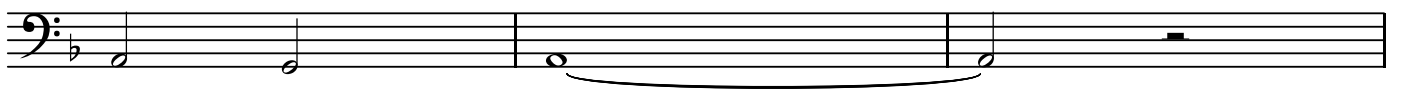
BK=13



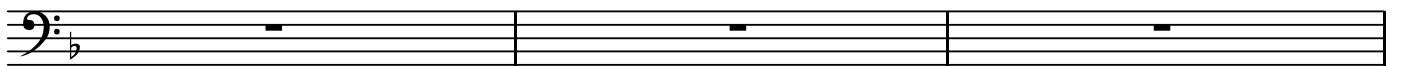
BK=14



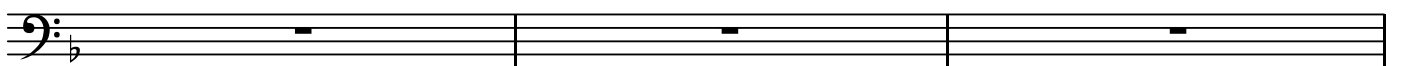
BK=15



BK=16



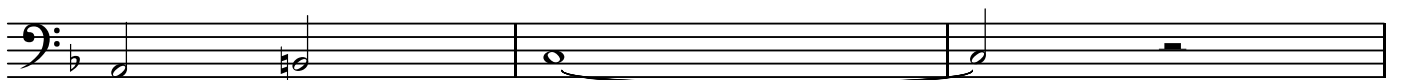
BK=17



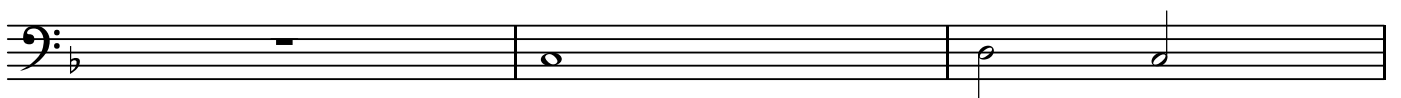
BK=18



BK=19



BK=20



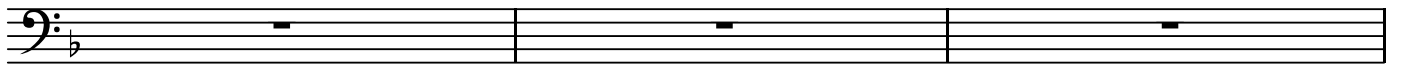
BK=21



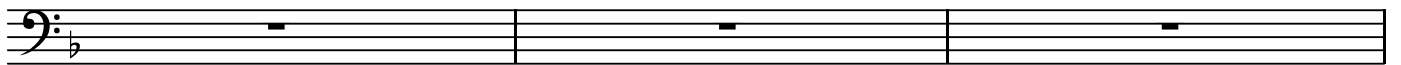
BK=22



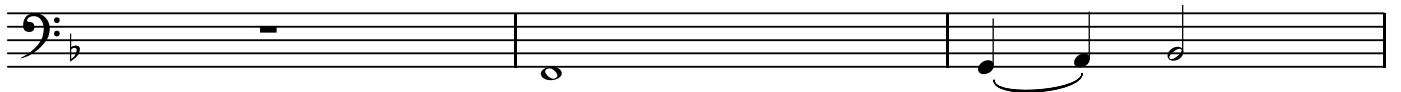
BK=23



BK=24



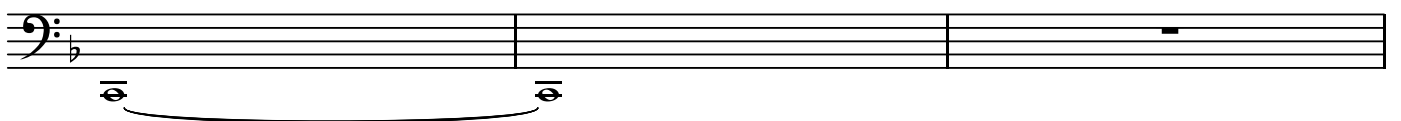
BK=25



BK=26



BK=27



BK=28



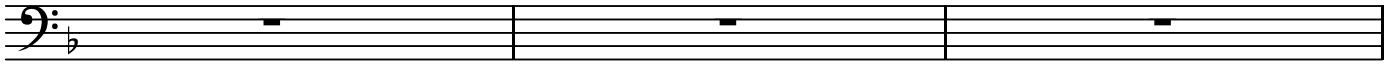
BK=29



BK=30



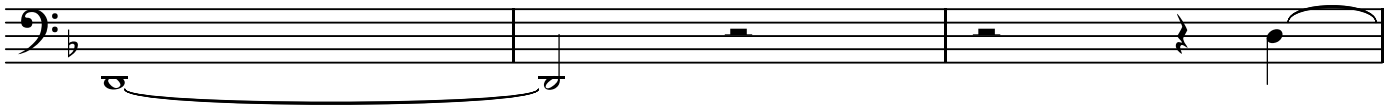
BK=31



BK=32



BK=33



BK=34



BK=35



BK=36

