

BK=1



BK=2



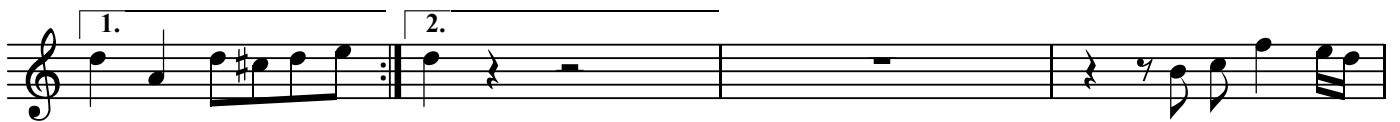
BK=3



BK=4



BK=5



BK=6



BK=7



BK=8



BK=9



A

3. 愛する神にのみ従う者は BWV647

J.S.Bach

BK=1

Musical staff BK=1, starting with a treble clef and a common time signature (C). It begins with a whole rest, followed by a repeat sign. The first measure of the repeat contains a quarter rest, and the second measure contains a quarter note G4. The staff continues with a series of eighth and sixteenth notes, including a sharp sign (F#) and a flat sign (Bb).

BK=2

Musical staff BK=2, continuing the melody with eighth and sixteenth notes. It features a sharp sign (F#) and a flat sign (Bb).

BK=3

Musical staff BK=3, continuing the melody with eighth and sixteenth notes. It features a sharp sign (F#) and a flat sign (Bb).

BK=4

Musical staff BK=4, continuing the melody with eighth and sixteenth notes. It features a flat sign (Bb) and a slur over the final two measures.

BK=5

Musical staff BK=5, continuing the melody with eighth and sixteenth notes. It includes first and second endings, marked with '1.' and '2.' above the staff.

BK=6

Musical staff BK=6, continuing the melody with eighth and sixteenth notes. It features a flat sign (Bb) and a slur over the final two measures.

BK=7

Musical staff BK=7, continuing the melody with eighth and sixteenth notes. It features a flat sign (Bb) and a slur over the final two measures.

BK=8

Musical staff BK=8, continuing the melody with eighth and sixteenth notes. It features a sharp sign (F#) and a flat sign (Bb), with a slur over the final two measures.

BK=9

Musical staff BK=9, concluding the piece with eighth and sixteenth notes. It features a flat sign (Bb) and a double bar line at the end.

B

3. 愛する神にのみ従う者は BWV647

J.S.Bach

BK=1



BK=2



BK=3



BK=4



BK=5



BK=6



BK=7



BK=8



BK=9

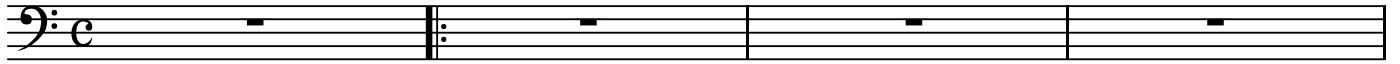


GB

3. 愛する神にのみ従う者は BWV647

J.S.Bach

BK=1



GB

BK=2



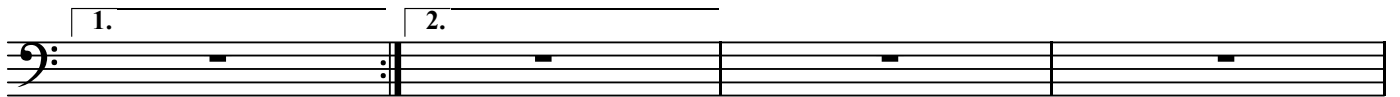
BK=3



BK=4



BK=5



BK=6



BK=7



BK=8



BK=9

