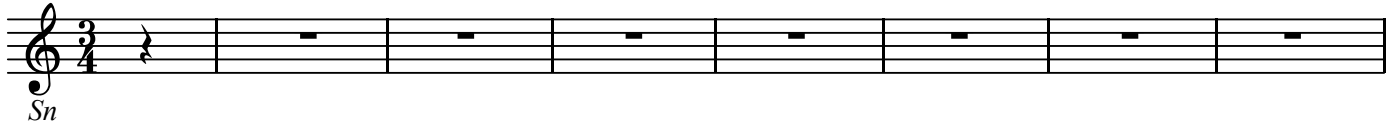


Sn

パッサカリア BWV582

J.S.Bach

BK=1



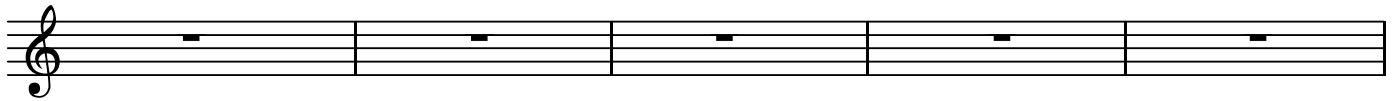
BK=2



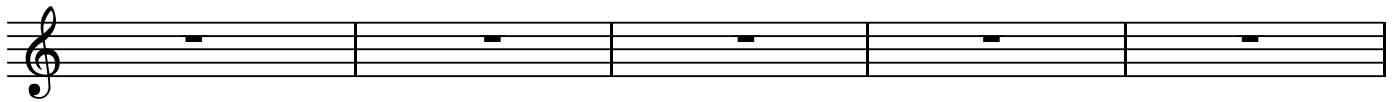
BK=3



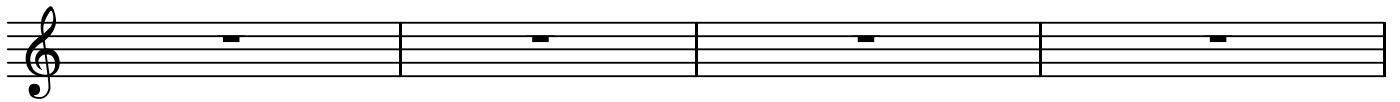
BK=4



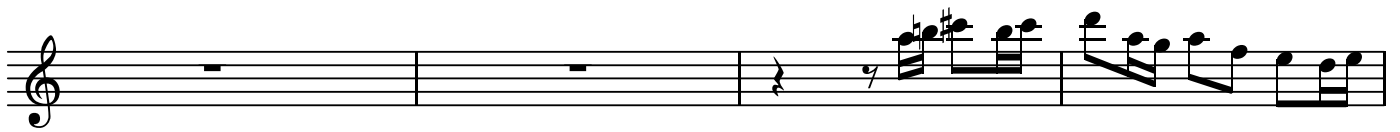
BK=5



BK=6



BK=7



BK=8



BK=9



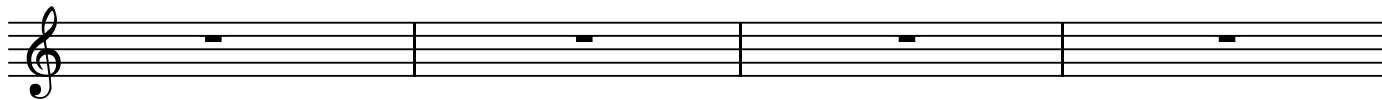
BK=10



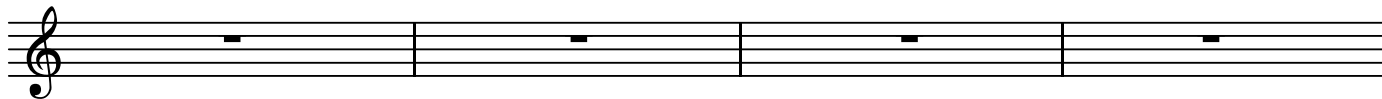
BK=11



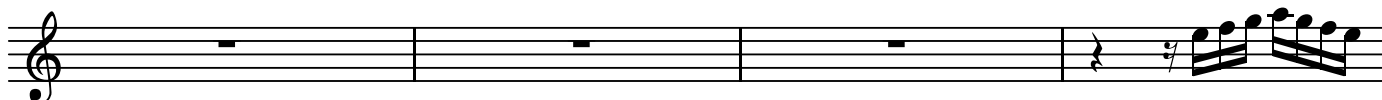
BK=12



BK=13



BK=14



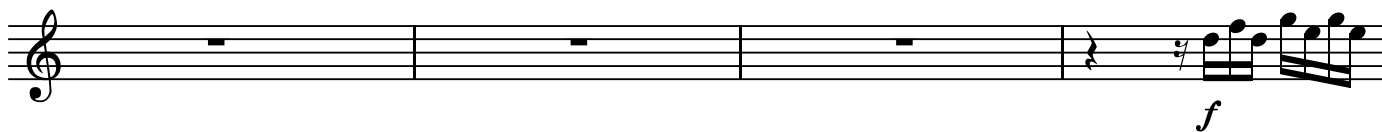
BK=15



BK=16



BK=17



BK=18



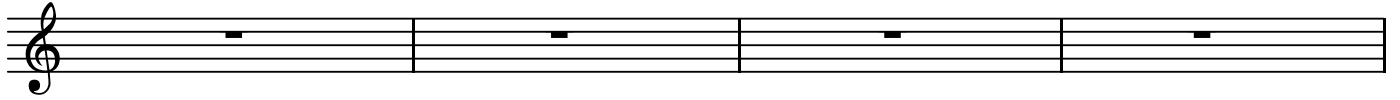
BK=19



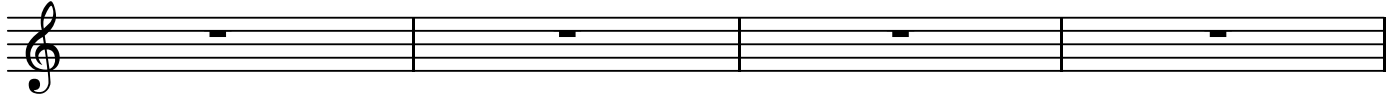
BK=20



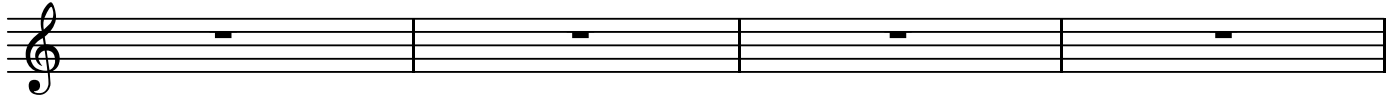
BK=21



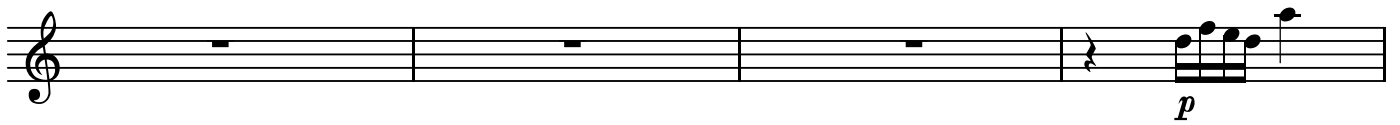
BK=22



BK=23



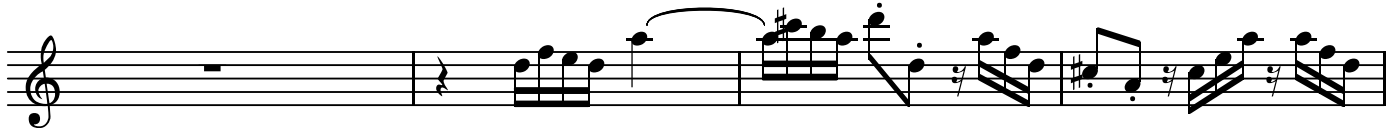
BK=24



BK=25



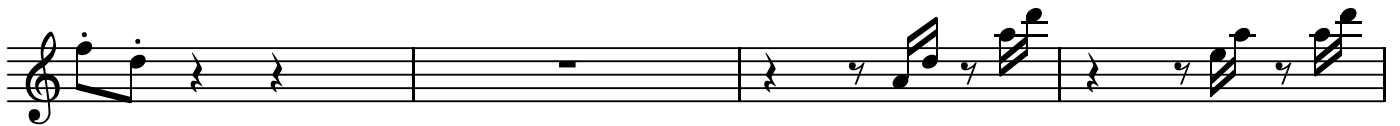
BK=26



BK=27



BK=28



BK=29



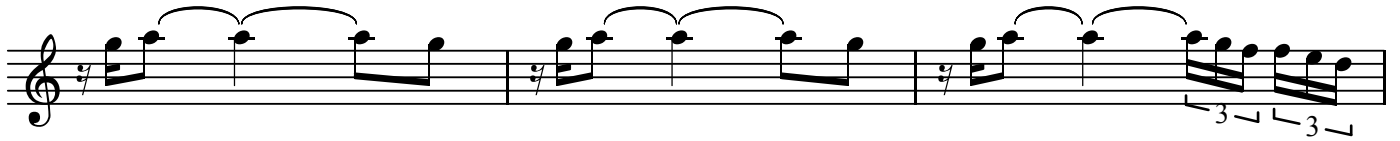
BK=30



BK=31



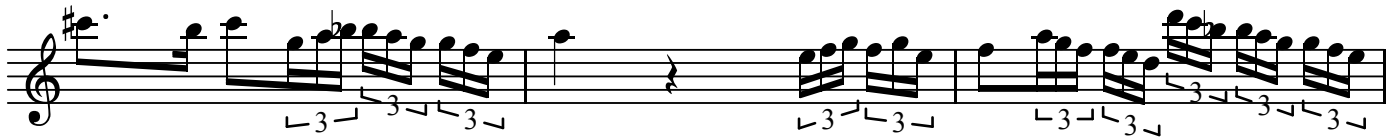
BK=32



BK=33



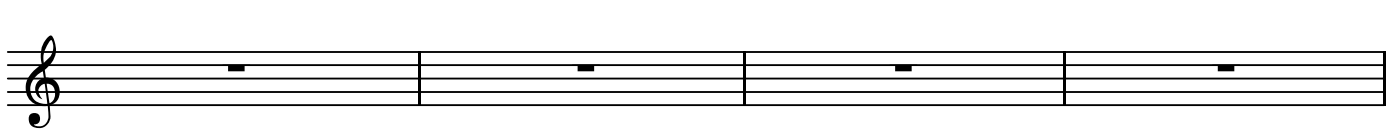
BK=34



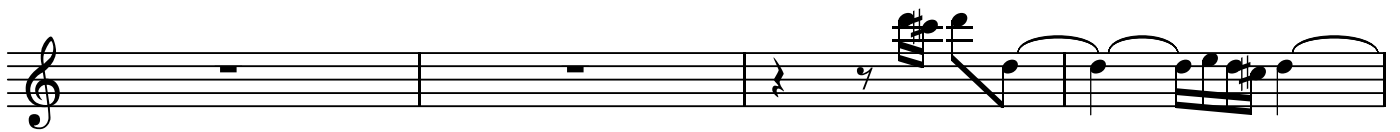
BK=35



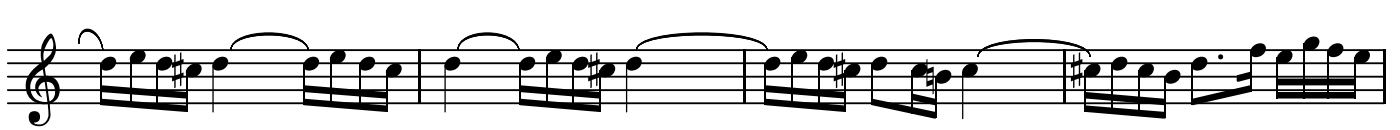
BK=36



BK=37



BK=38



BK=39



BK=40



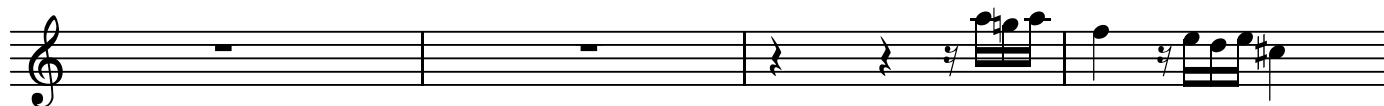
BK=41



BK=42



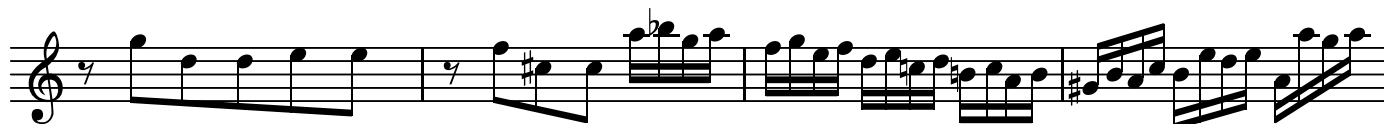
BK=43



BK=44



BK=45



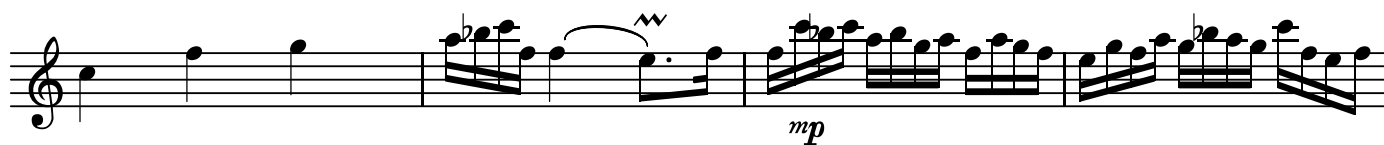
BK=46



BK=47



BK=48



BK=49



BK=50



BK=51



BK=52



BK=53



BK=54



BK=55



BK=56



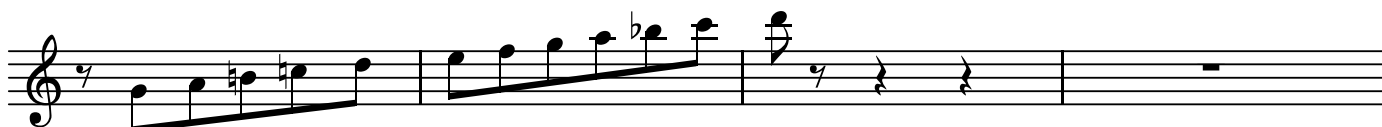
BK=57



BK=58



BK=59



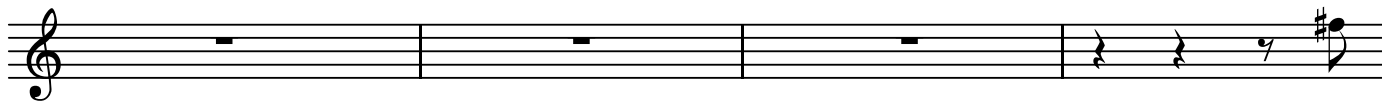
BK=60



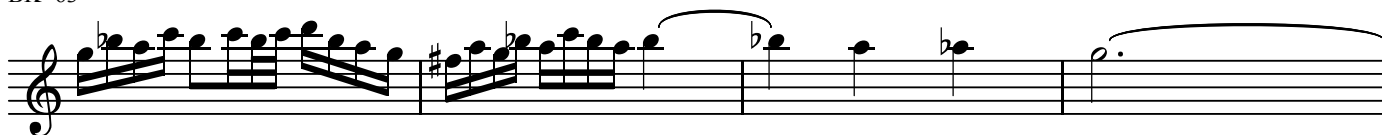
BK=61



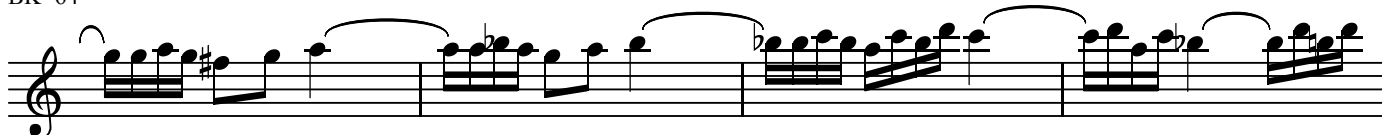
BK=62



BK=63



BK=64



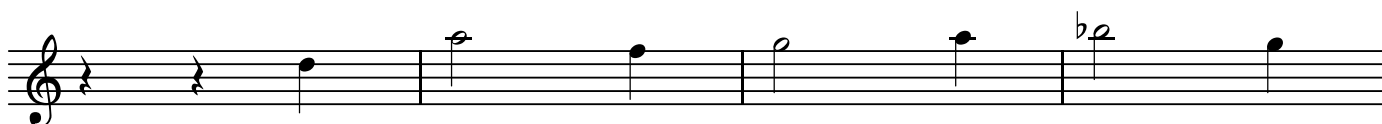
BK=65



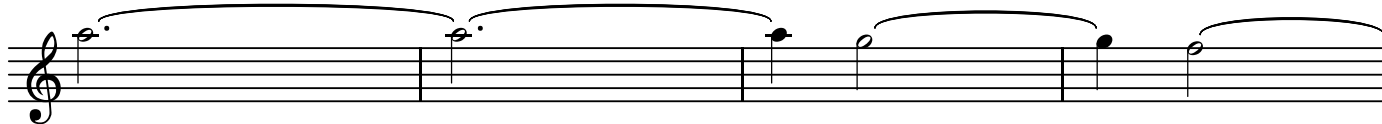
BK=66



BK=67



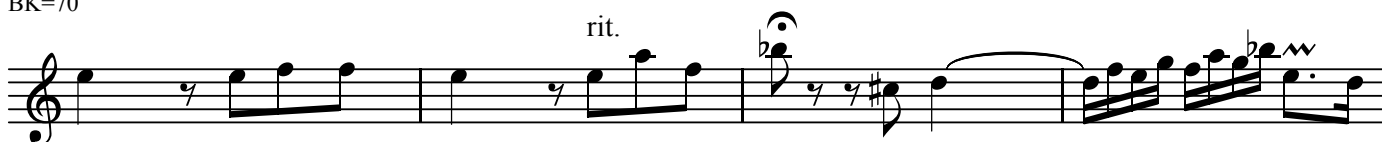
BK=68



BK=69



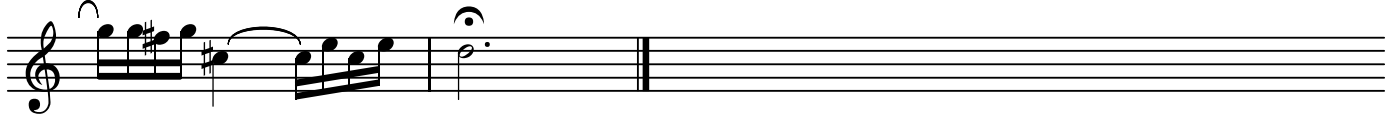
BK=70



BK=71



BK=72





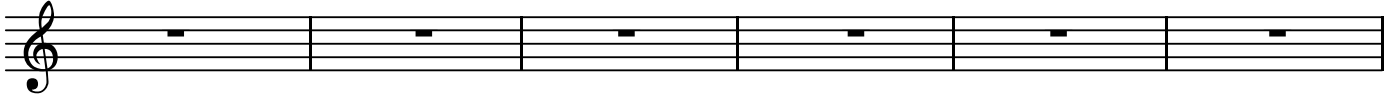
パッサカリア BWV582

J.S.Bach

BK=1



BK=2



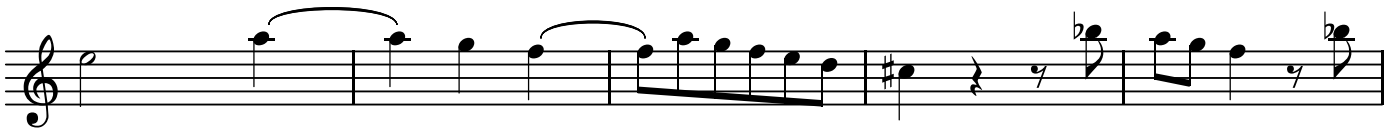
BK=3



BK=4



BK=5



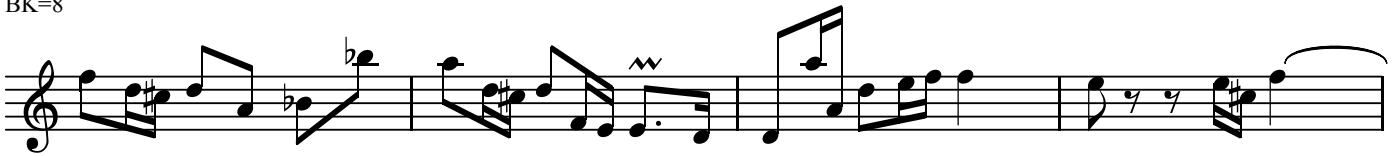
BK=6



BK=7



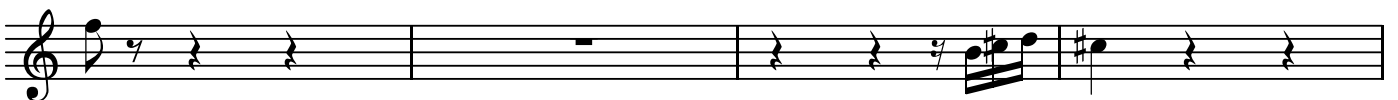
BK=8



BK=9



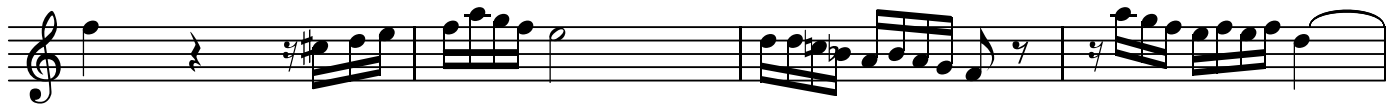
BK=10



BK=11



BK=12



BK=13



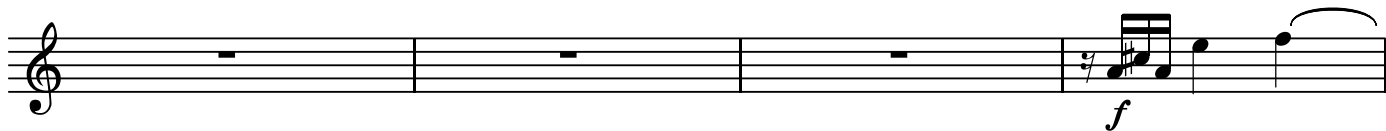
BK=14



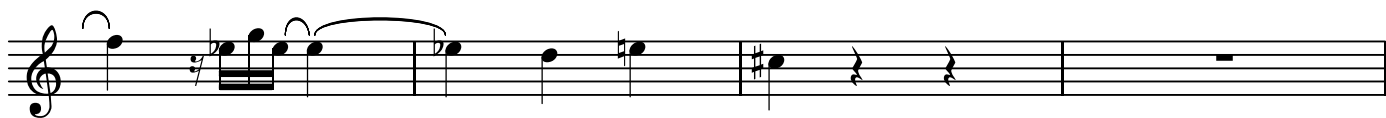
BK=15



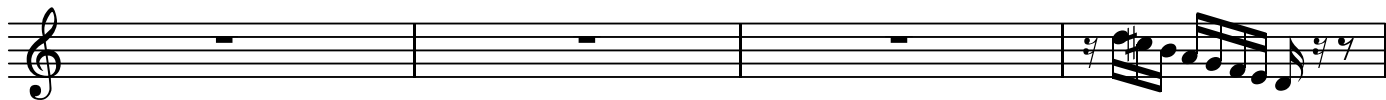
BK=16



BK=17



BK=18



BK=19



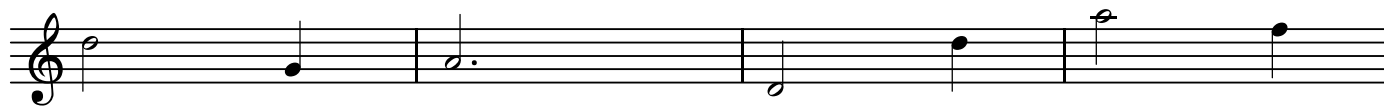
BK=20



BK=21



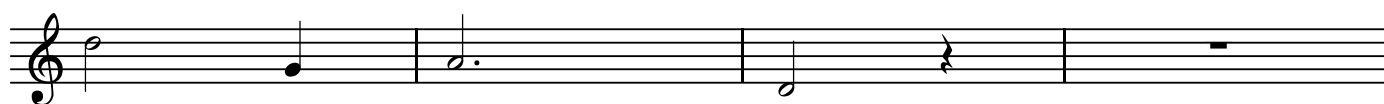
BK=22



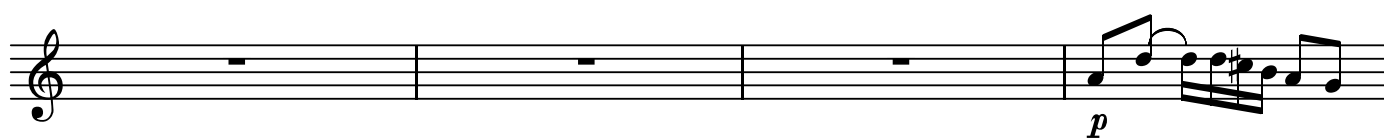
BK=23



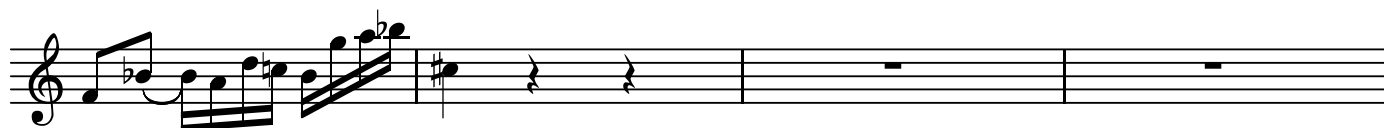
BK=24



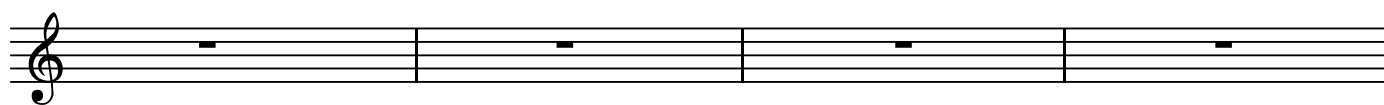
BK=25



BK=26



BK=27



BK=28



BK=29



BK=30



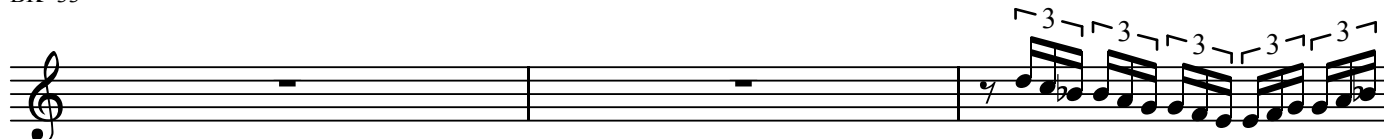
BK=31



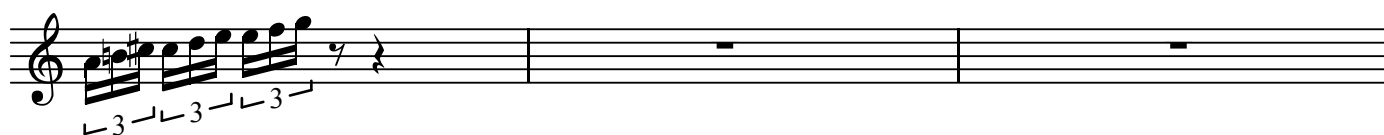
BK=32



BK=33



BK=34



BK=35



BK=36



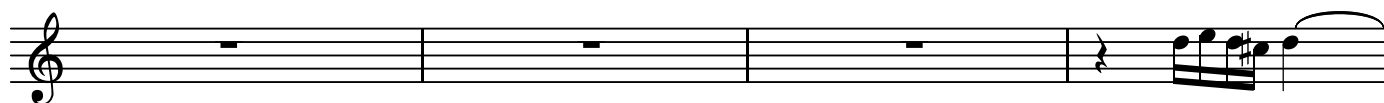
BK=37



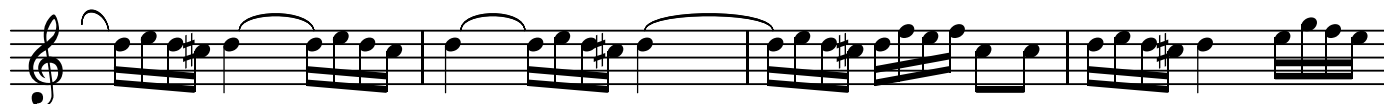
BK=38



BK=39



BK=40



BK=41



BK=42



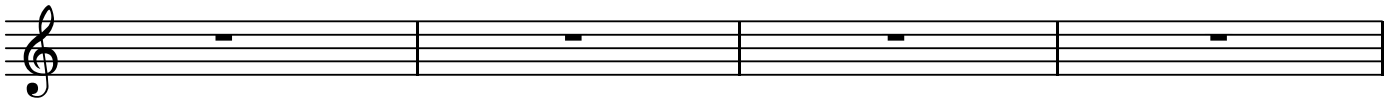
BK=43



BK=44



BK=45



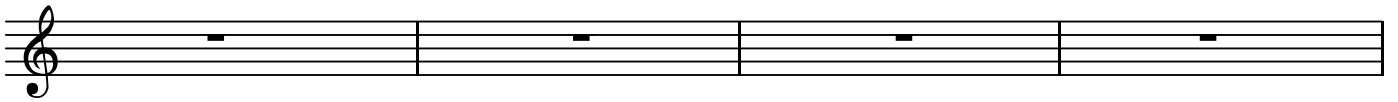
BK=46



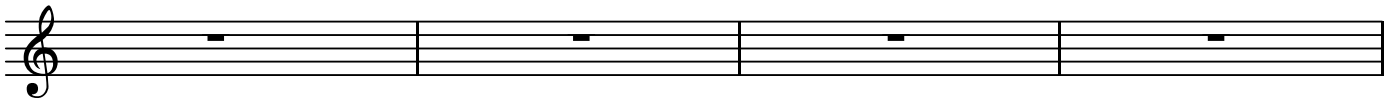
BK=47



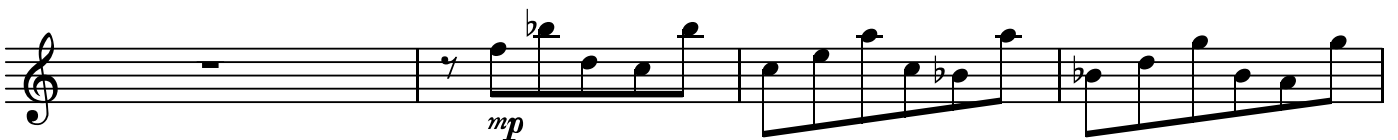
BK=48



BK=49



BK=50



BK=51



BK=52



BK=53



BK=54



BK=55



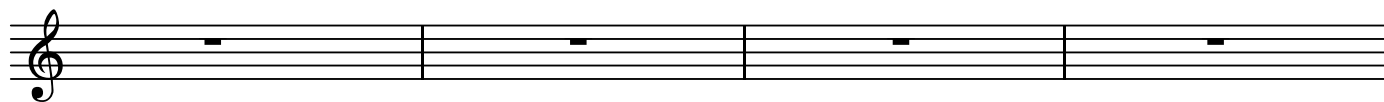
BK=56



BK=57



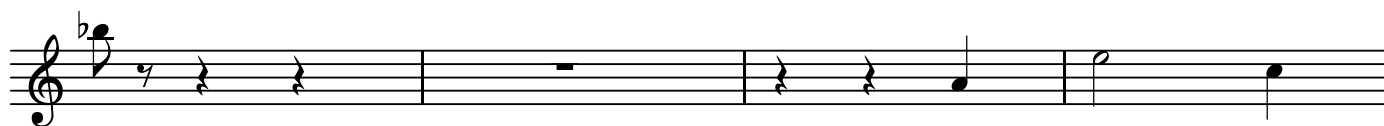
BK=58



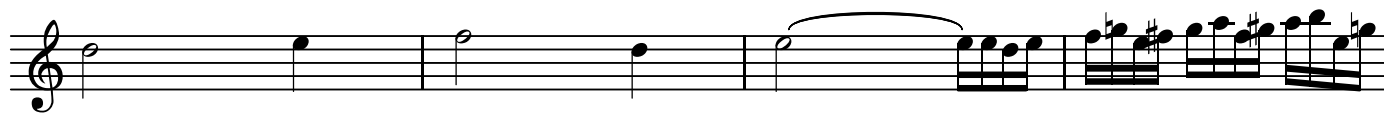
BK=59



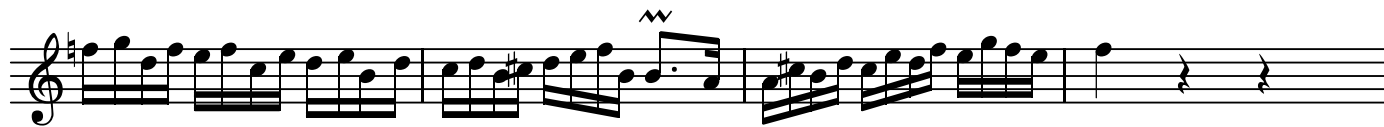
BK=60



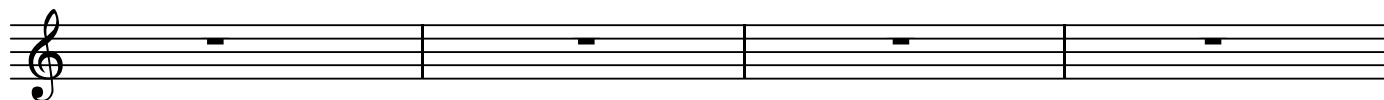
BK=61



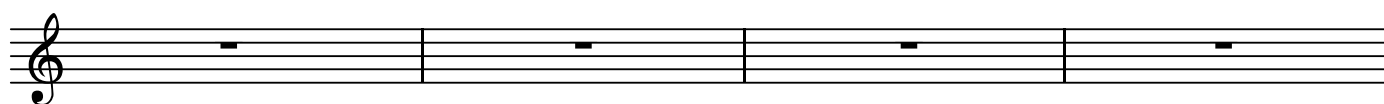
BK=62



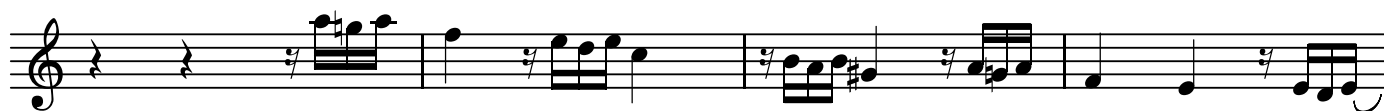
BK=63



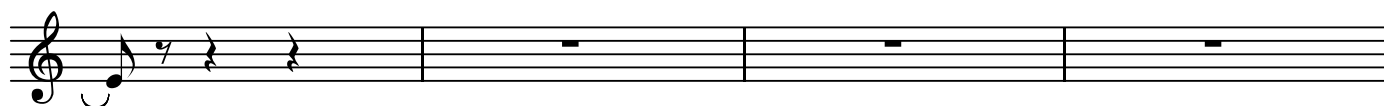
BK=64



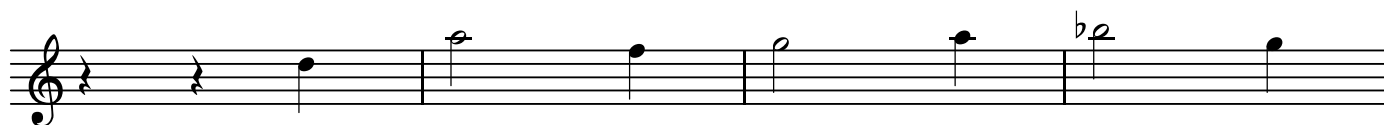
BK=65



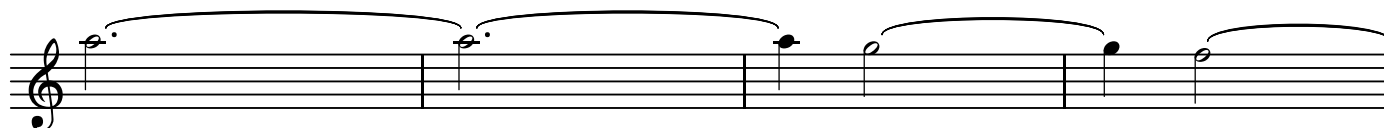
BK=66



BK=67



BK=68



BK=69



BK=70



BK=71



BK=72



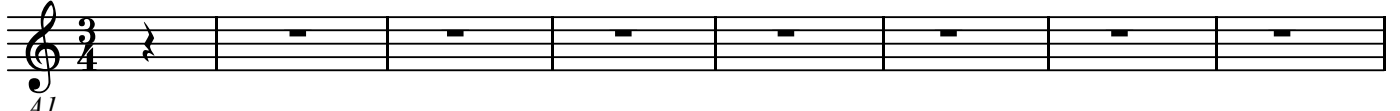


A1

パッサカリア BWV582

J.S.Bach

BK=1



*A1*

BK=2



BK=3



BK=4



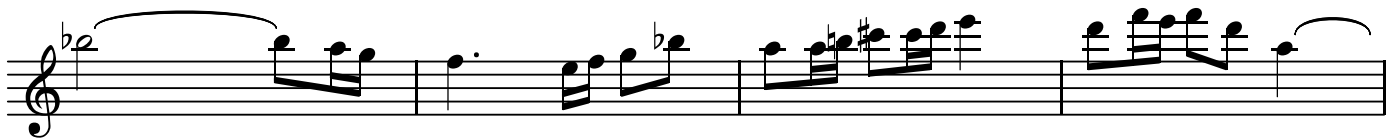
BK=5



BK=6



BK=7



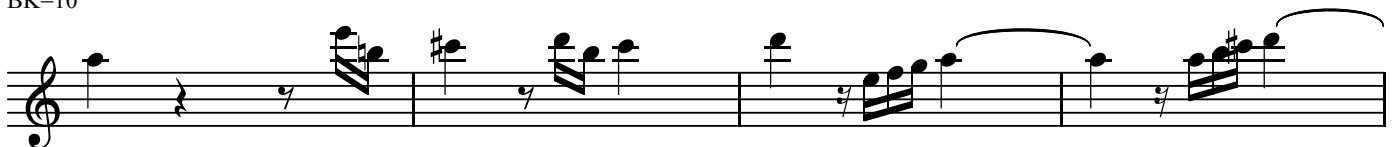
BK=8



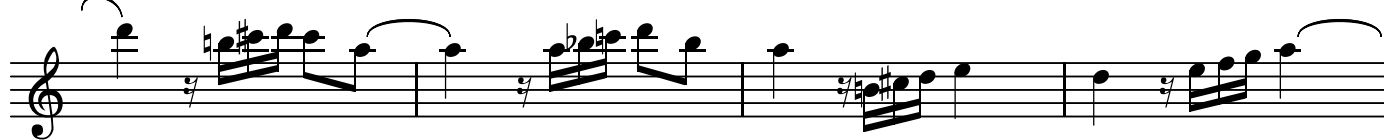
BK=9



BK=10



BK=11



BK=12



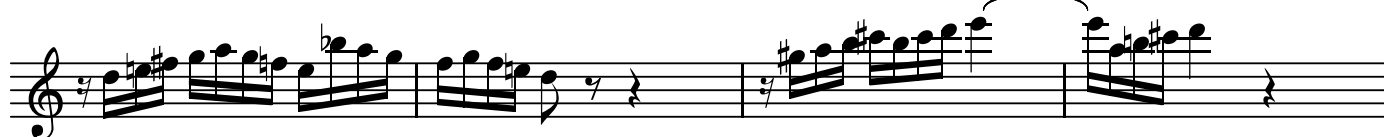
BK=13



BK=14



BK=15



BK=16



BK=17



BK=18



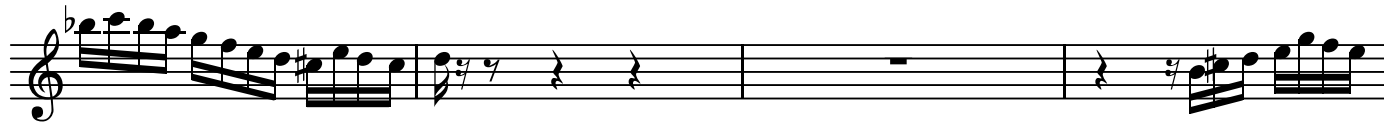
BK=19



BK=20



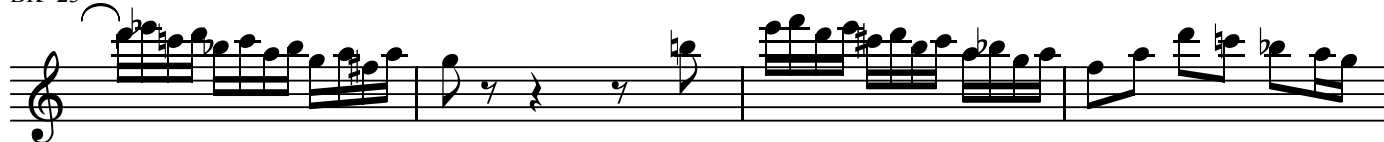
BK=21



BK=22



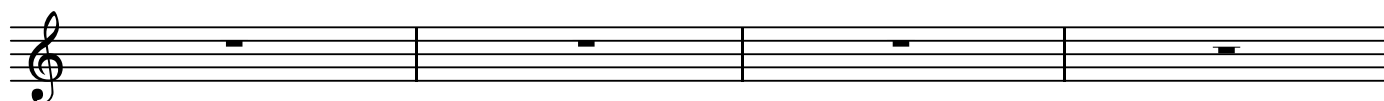
BK=23



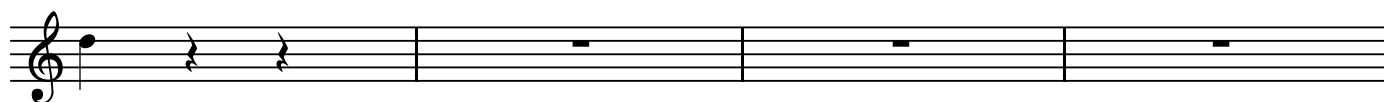
BK=24



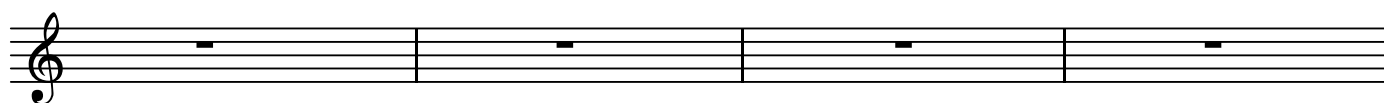
BK=25



BK=26



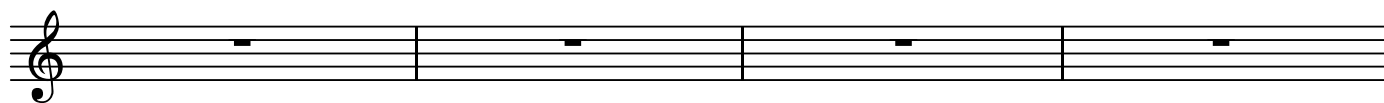
BK=27



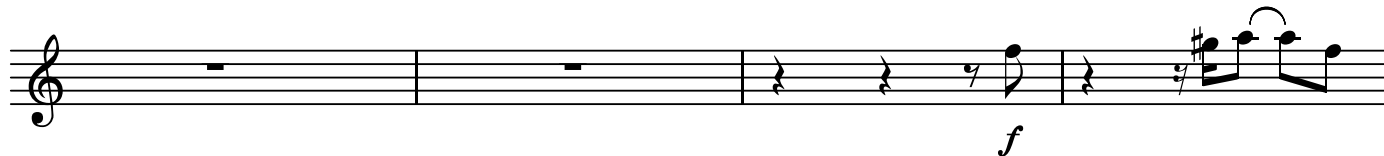
BK=28



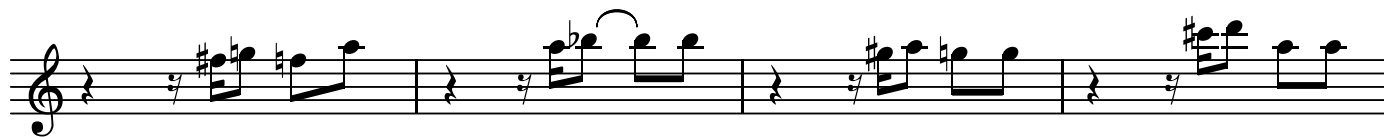
BK=29



BK=30



BK=31



BK=32



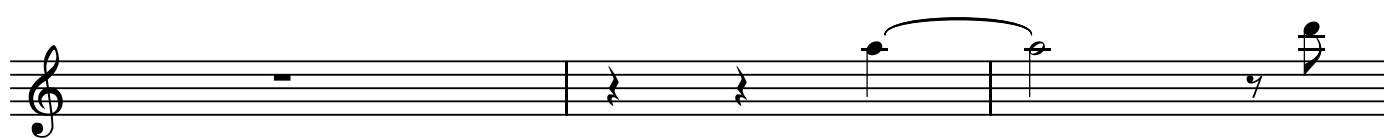
BK=33



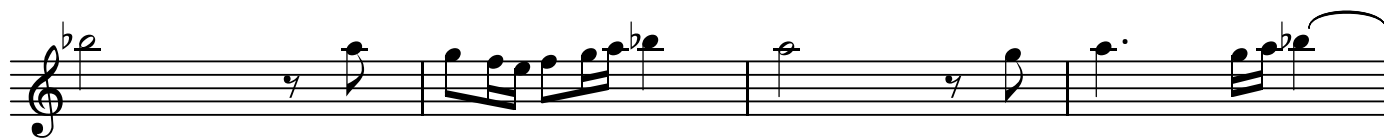
BK=34



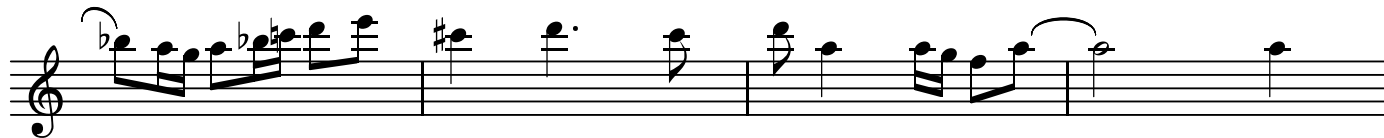
BK=35



BK=36



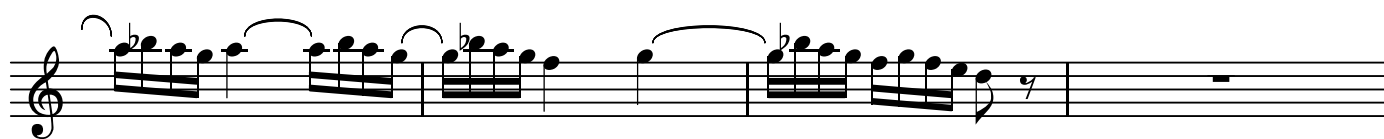
BK=37



BK=38



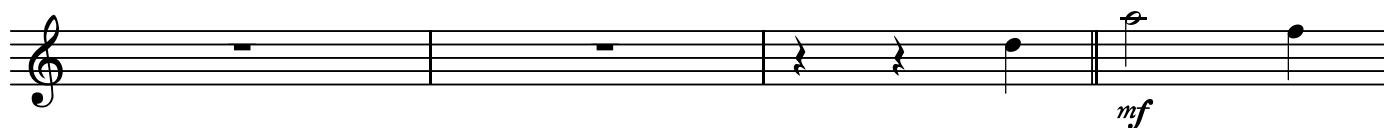
BK=39



BK=40



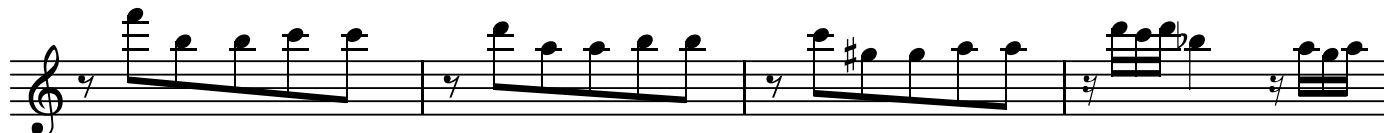
BK=41



BK=42



BK=43



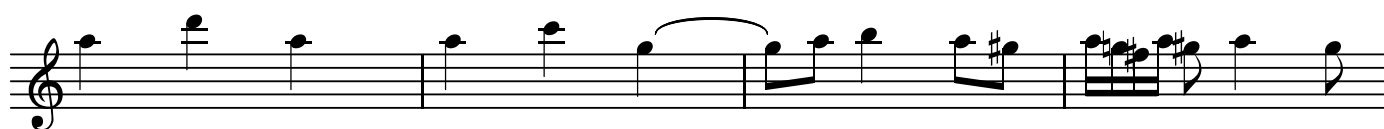
BK=44



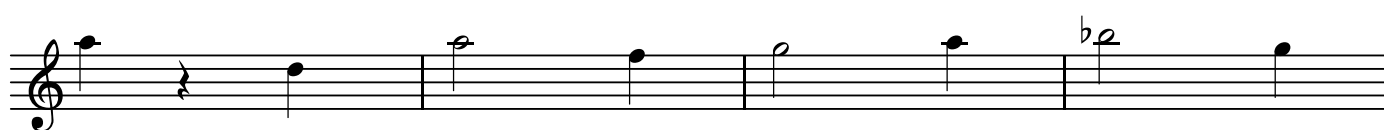
BK=45



BK=46



BK=47



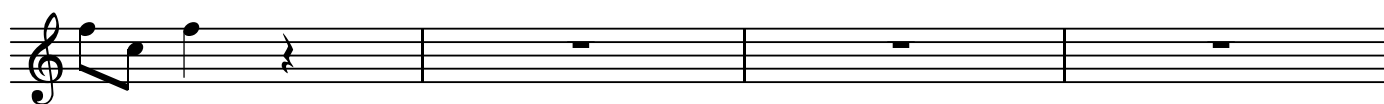
BK=48



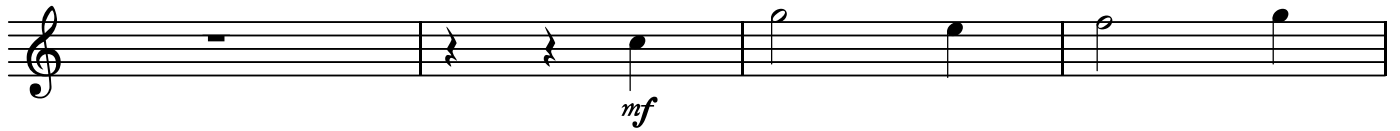
BK=49



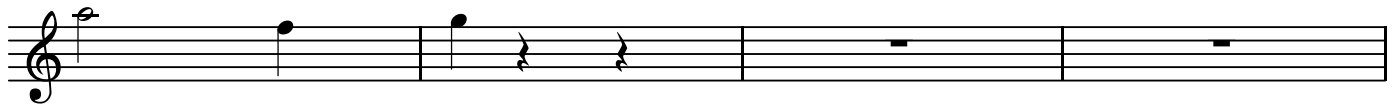
BK=50



BK=51



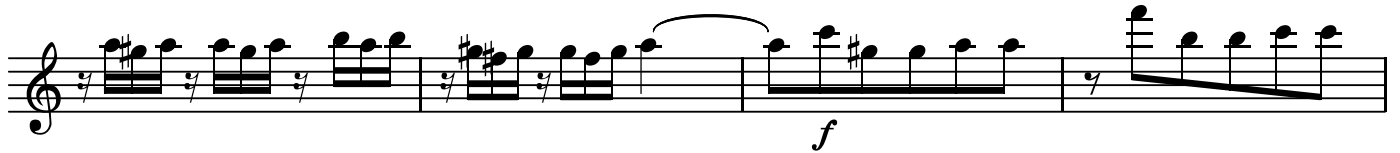
BK=52



BK=53



BK=54



BK=55



BK=56



BK=57



BK=58



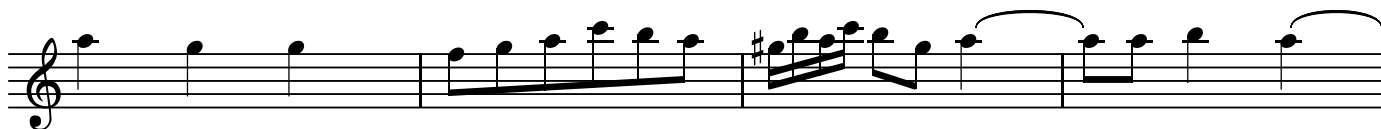
BK=59



BK=60



BK=61



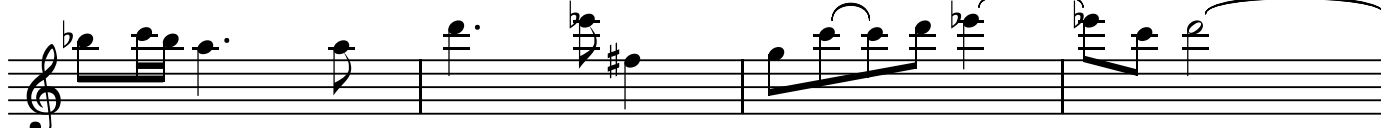
BK=62



BK=63



BK=64



BK=65



BK=66



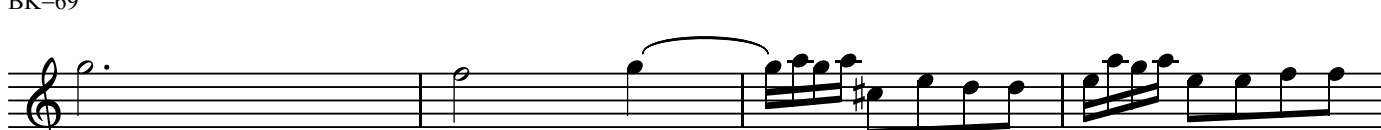
BK=67



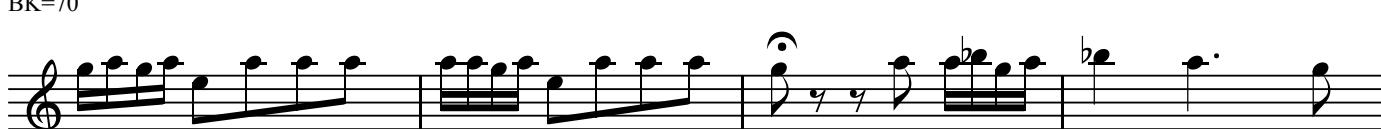
BK=68



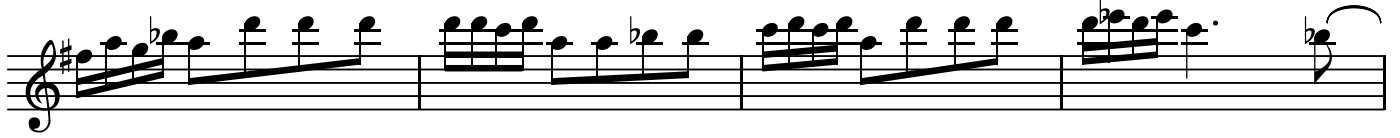
BK=69



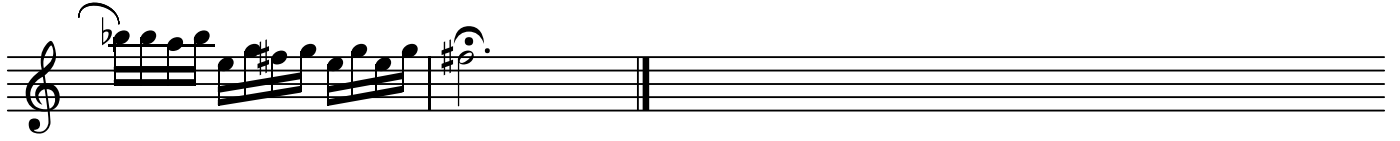
BK=70



BK=71



BK=72



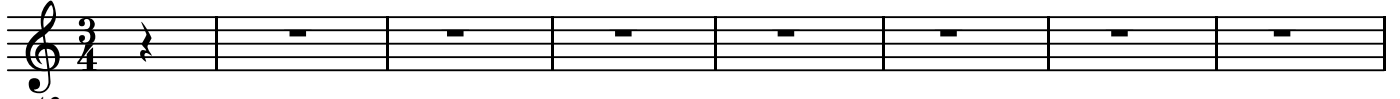


A2

パッサカリア BWV582

J.S.Bach

BK=1



A2

BK=2



BK=3



BK=4



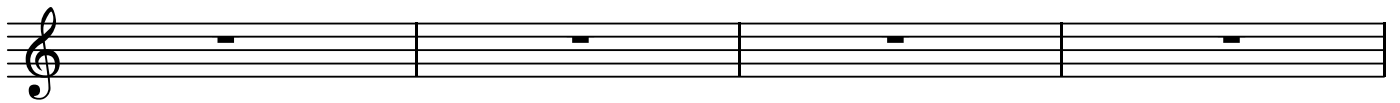
BK=5



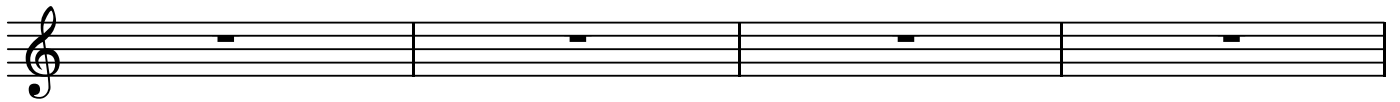
BK=6



BK=7



BK=8



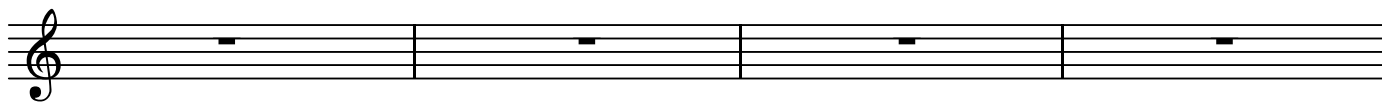
BK=9



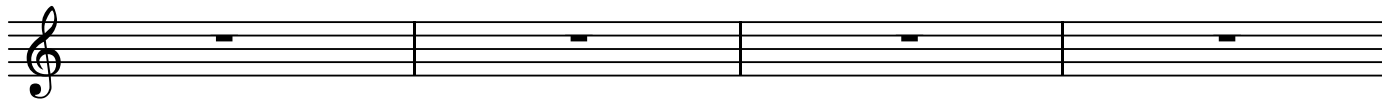
BK=10



BK=11



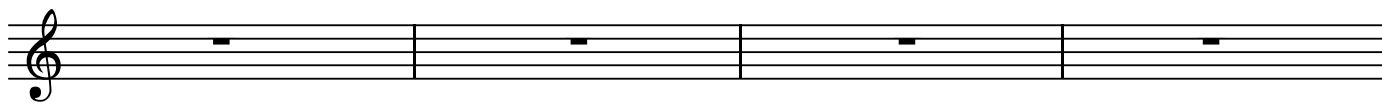
BK=12



BK=13



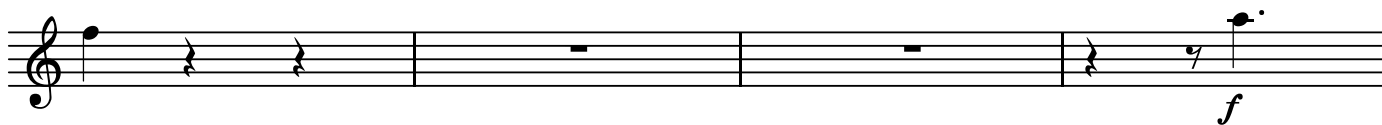
BK=14



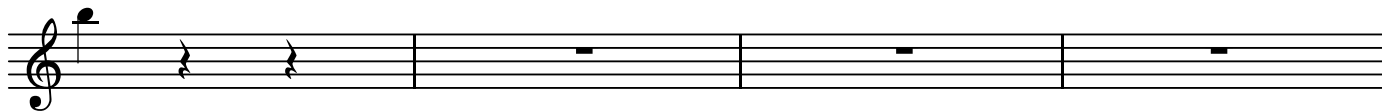
BK=15



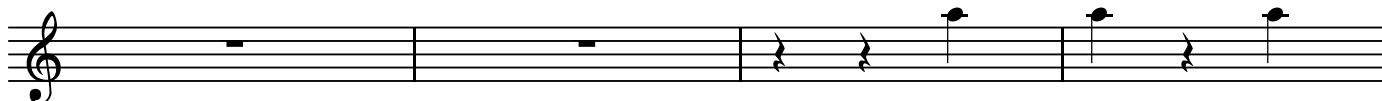
BK=16



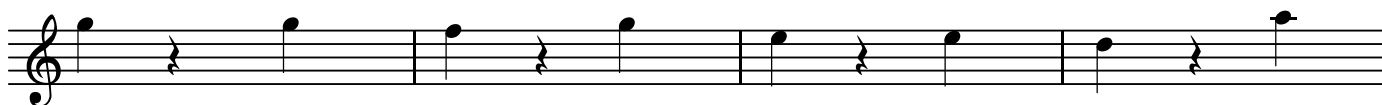
BK=17



BK=18



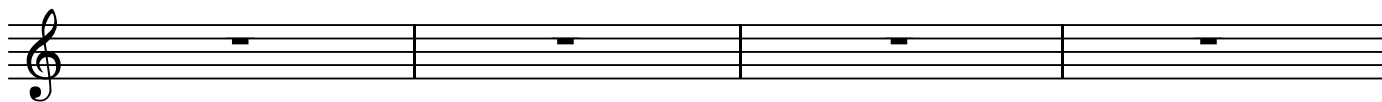
BK=19



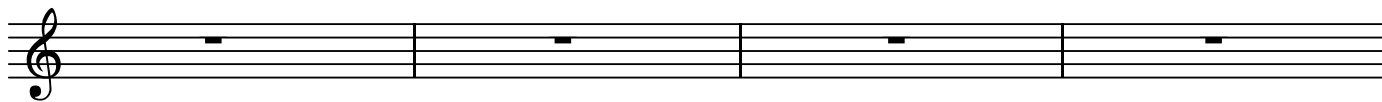
BK=20



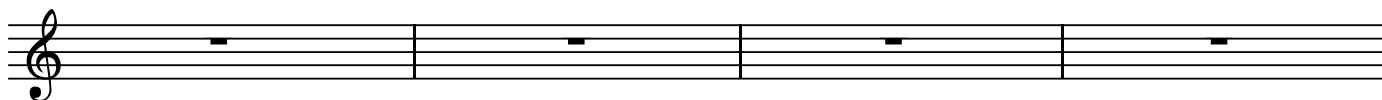
BK=21



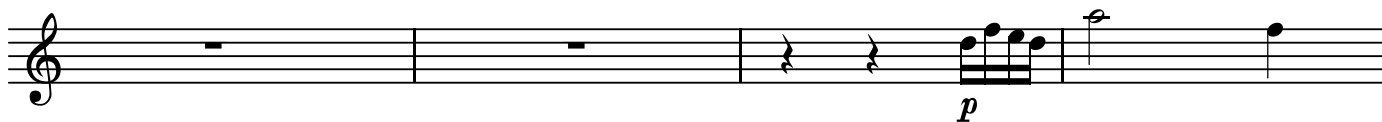
BK=22



BK=23



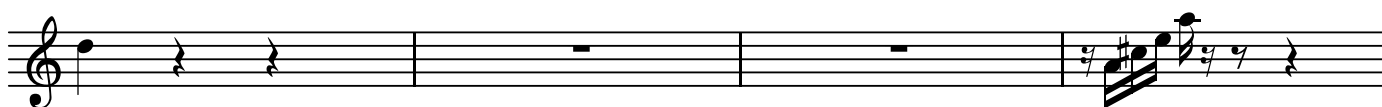
BK=24



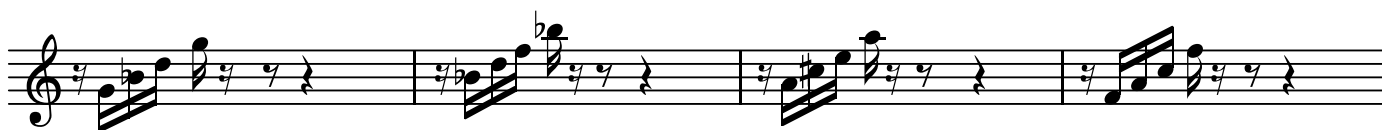
BK=25



BK=26



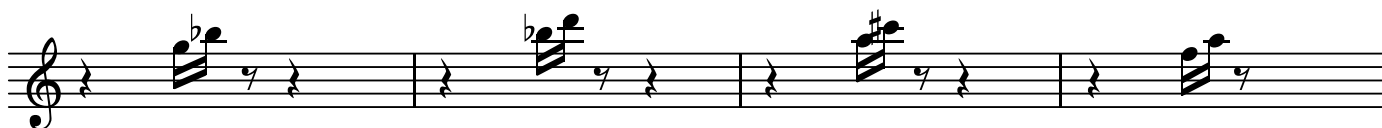
BK=27



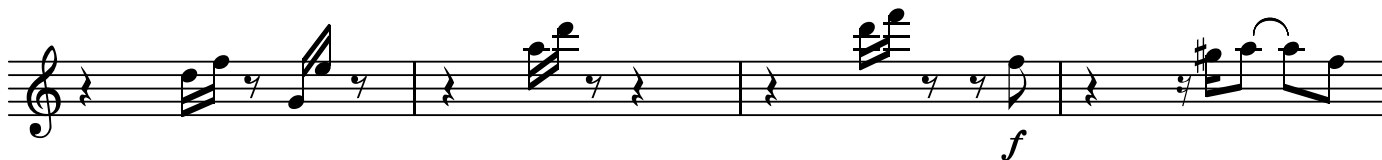
BK=28



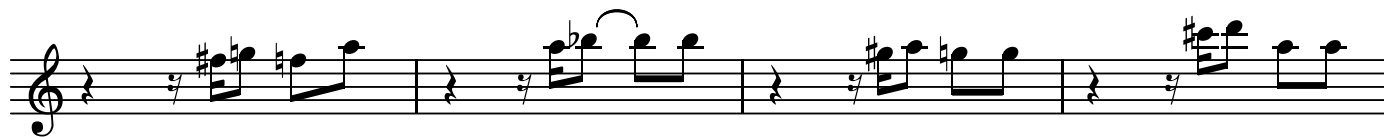
BK=29



BK=30



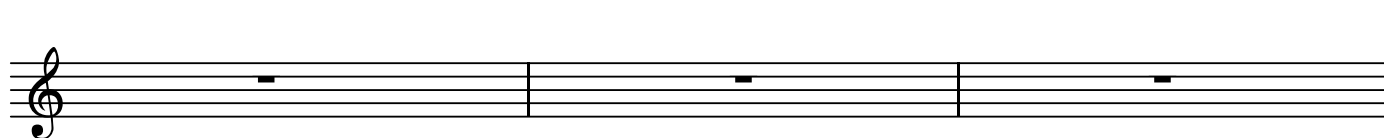
BK=31



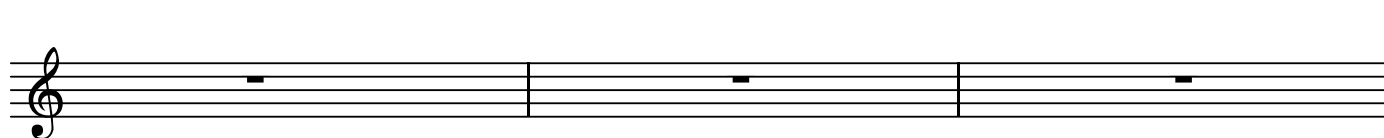
BK=32



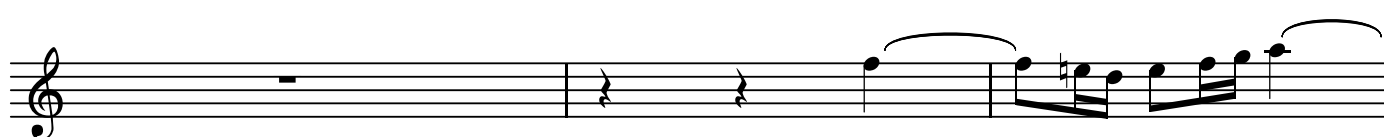
BK=33



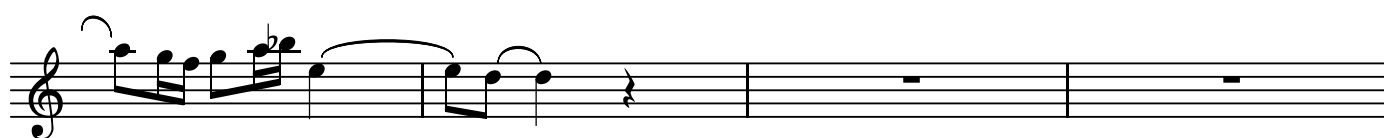
BK=34



BK=35



BK=36



BK=37



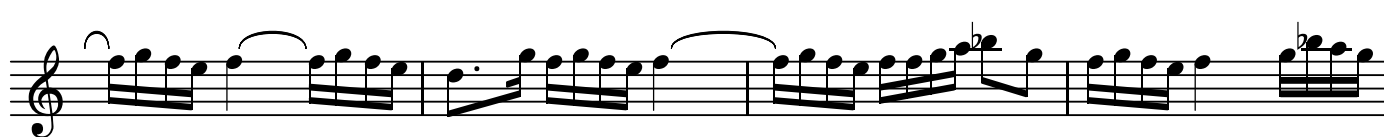
BK=38



BK=39



BK=40



BK=41



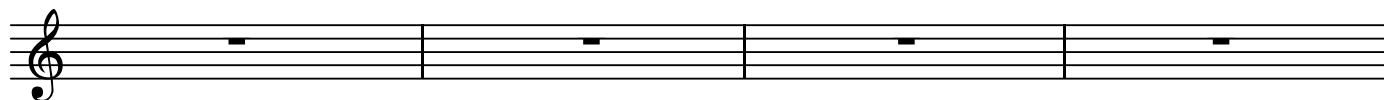
Musical staff for BK=41, showing a treble clef, a series of eighth notes with slurs, and a dynamic marking of *mf* at the end.

BK=42



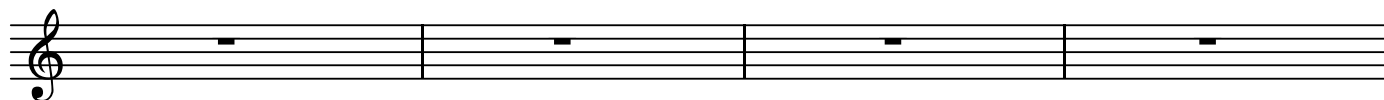
Musical staff for BK=42, showing a treble clef, a series of notes with slurs, and a dynamic marking of *mf* at the end.

BK=43



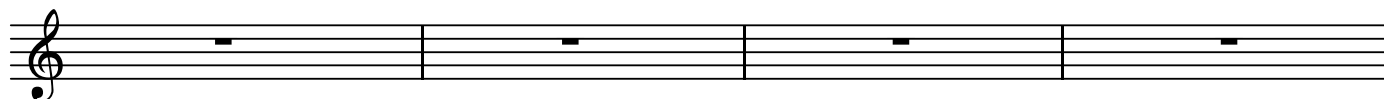
Musical staff for BK=43, showing a treble clef and a series of rests.

BK=44



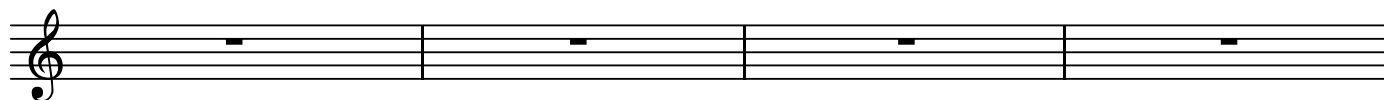
Musical staff for BK=44, showing a treble clef and a series of rests.

BK=45



Musical staff for BK=45, showing a treble clef and a series of rests.

BK=46



Musical staff for BK=46, showing a treble clef and a series of rests.

BK=47



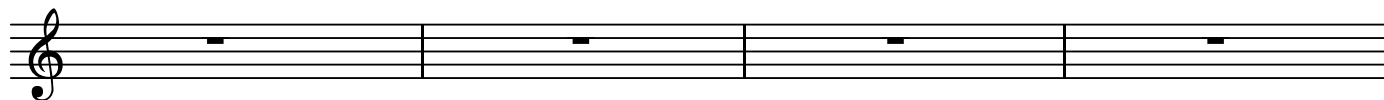
Musical staff for BK=47, showing a treble clef, a series of notes with slurs, and a dynamic marking of *mf* at the end.

BK=48



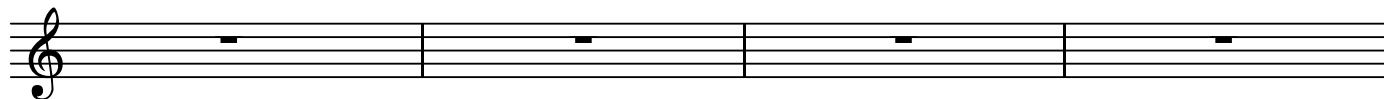
Musical staff for BK=48, showing a treble clef, a series of notes with slurs, and a dynamic marking of *mf* at the end.

BK=49



Musical staff for BK=49, showing a treble clef and a series of rests.

BK=50



Musical staff for BK=50, showing a treble clef and a series of rests.

BK=51



BK=52



BK=53



BK=54



BK=55



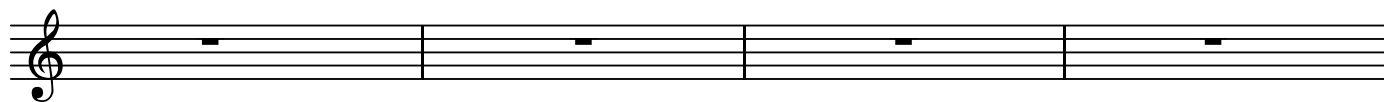
BK=56



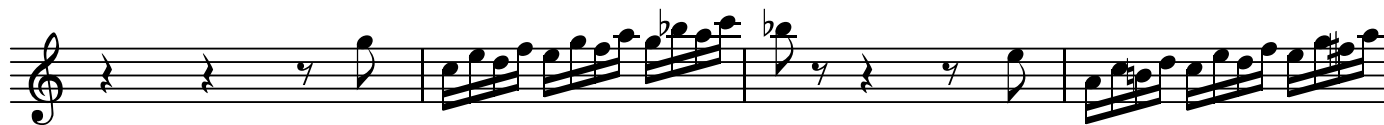
BK=57



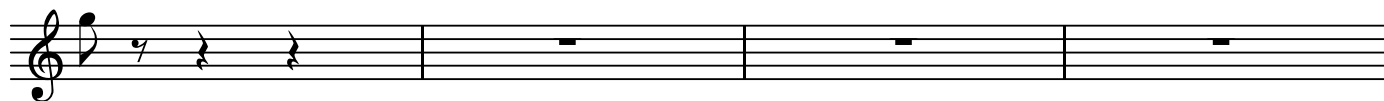
BK=58



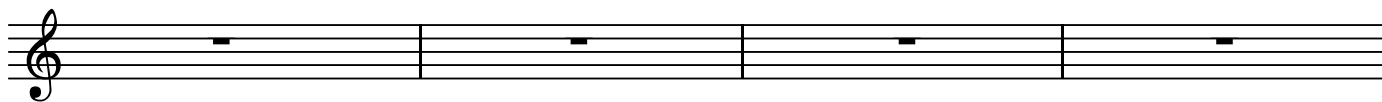
BK=59



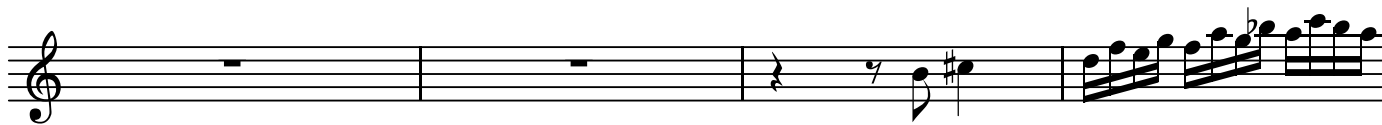
BK=60



BK=61



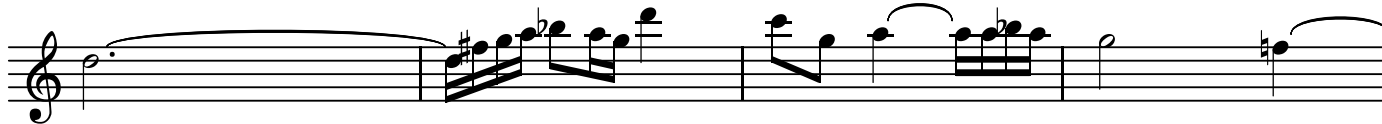
BK=62



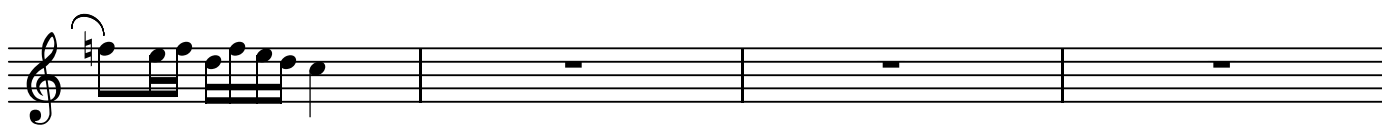
BK=63



BK=64



BK=65



BK=66



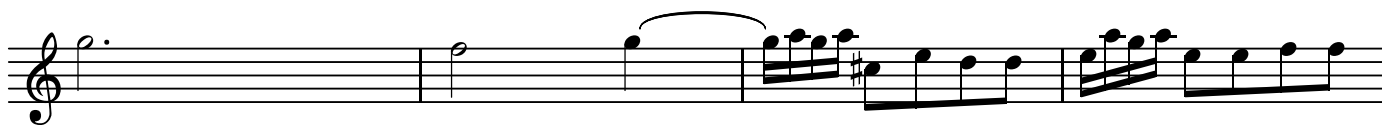
BK=67



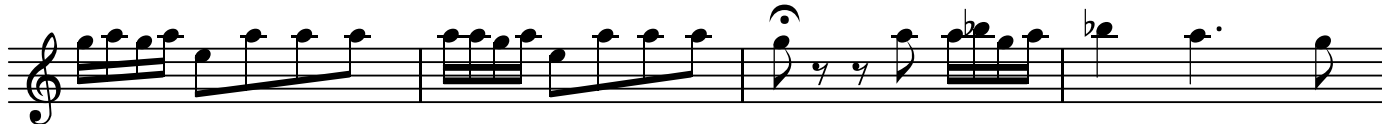
BK=68



BK=69



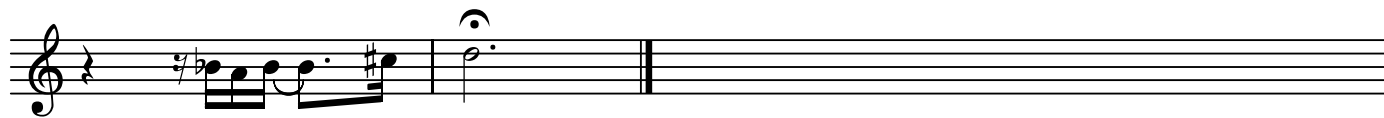
BK=70



BK=71



BK=72



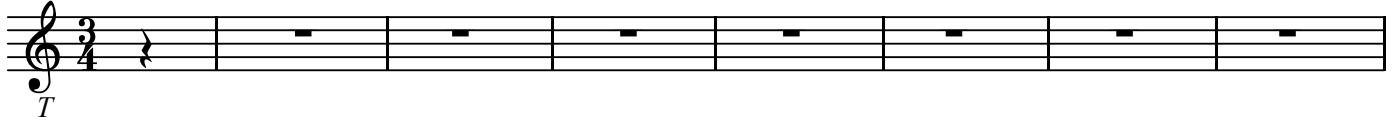


T

パッサカリア BWV582

J.S.Bach

BK=1



BK=2



BK=3



BK=4



BK=5



BK=6



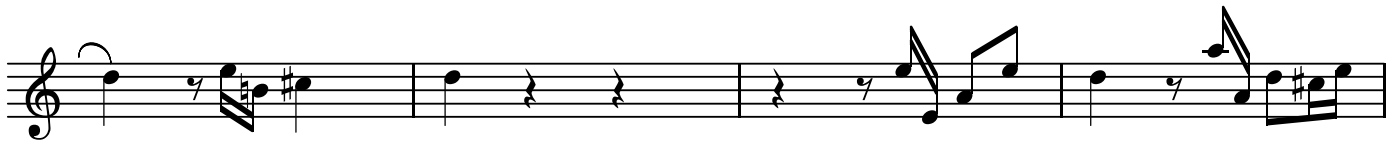
BK=7



BK=8



BK=9



BK=10



BK=11



BK=12



BK=13



BK=14



BK=15



BK=16



BK=17



BK=18



BK=19



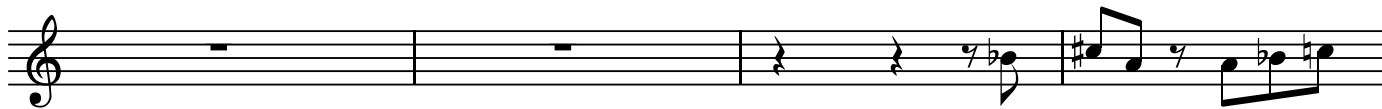
BK=20



BK=21



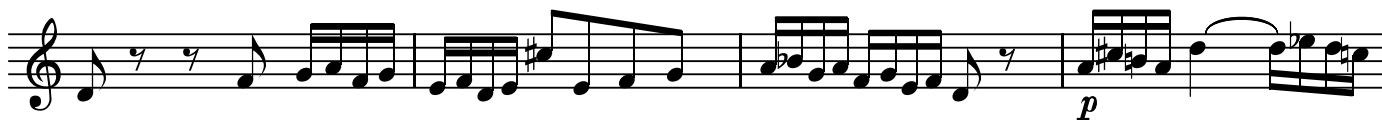
BK=22



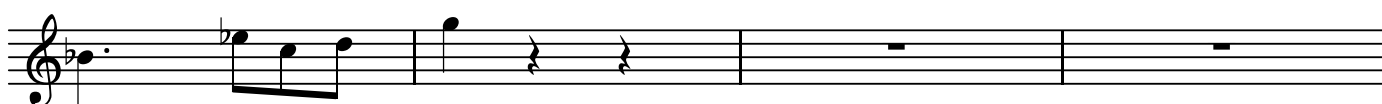
BK=23



BK=24



BK=25



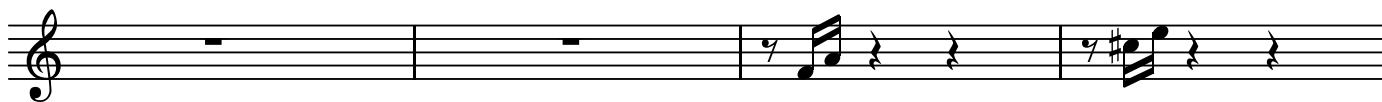
BK=26



BK=27



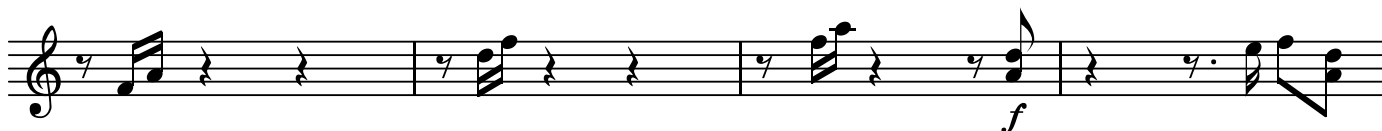
BK=28



BK=29



BK=30



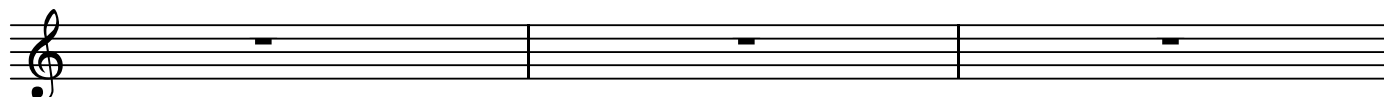
BK=31



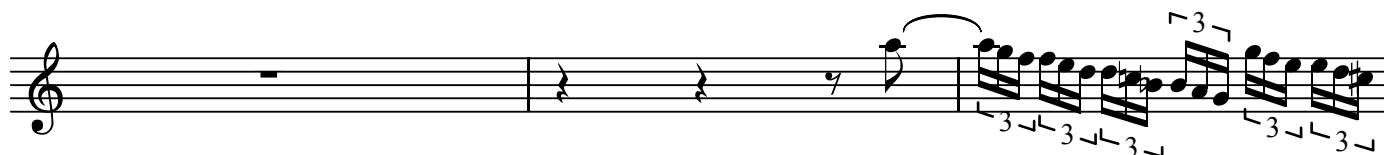
BK=32



BK=33



BK=34



BK=35



BK=36



BK=37



BK=38



BK=39



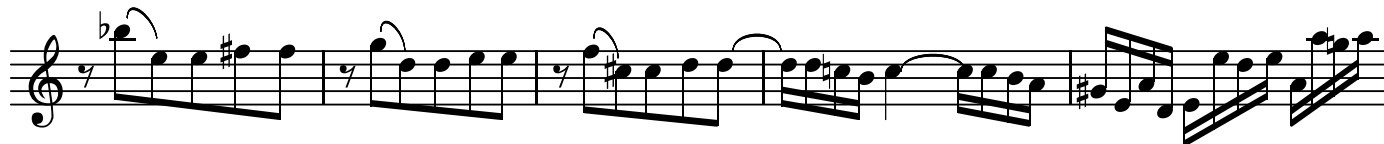
BK=40



BK=41



BK=42



BK=43



BK=44



BK=45



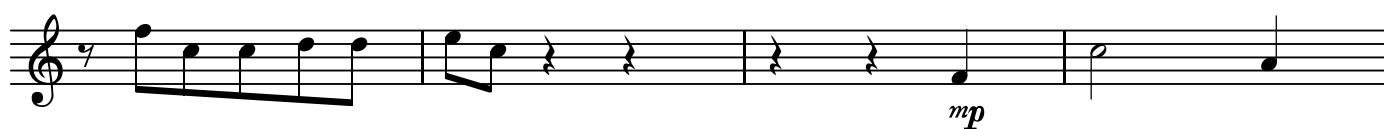
BK=46



BK=47



BK=48



BK=49



BK=50



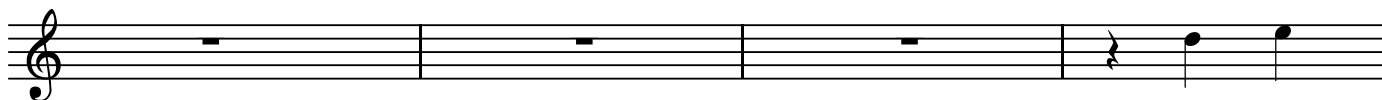
BK=51



BK=52



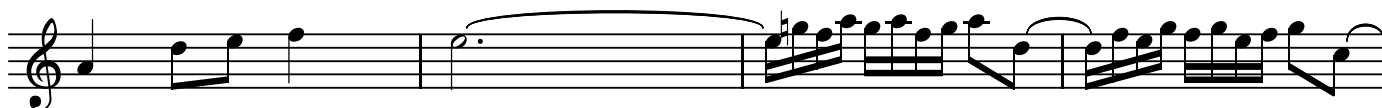
BK=53



BK=54



BK=55



BK=56



BK=57



BK=58



BK=59



BK=60



BK=61



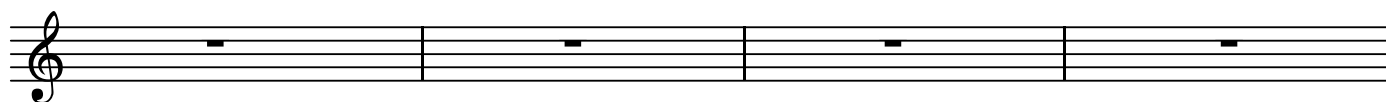
BK=62



BK=63



BK=64



BK=65



BK=66



BK=67



BK=68



BK=69



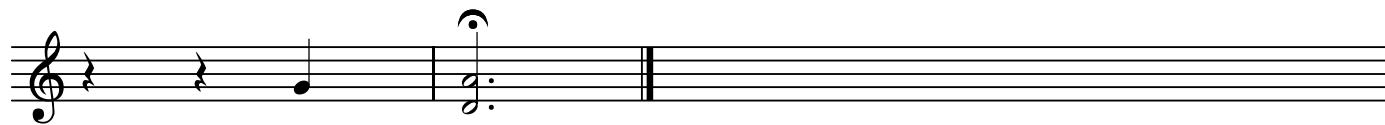
BK=70



BK=71



BK=72





GB

パッサカリア BWV582

J.S.Bach

BK=1

*B*  
*GB*  
BK=2



Musical notation for BK=1 and BK=2. The first staff shows a sequence of notes: G2, B2, G2, B2, G2, B2, G2, B2, G2, B2, G2, B2, G2, B2, G2, B2, G2, B2, G2, B2. The second staff shows a sequence of notes: G2, B2, G2, B2, G2, B2, G2, B2, G2, B2, G2, B2, G2, B2, G2, B2, G2, B2, G2, B2. The key signature is B-flat major (two flats) and the time signature is 3/4. The first staff has a 'B' and 'GB' written below it.

BK=3



Musical notation for BK=3. The staff shows a sequence of notes: G2, B2, G2, B2, G2, B2, G2, B2, G2, B2, G2, B2, G2, B2, G2, B2, G2, B2, G2, B2. The key signature is B-flat major (two flats) and the time signature is 3/4.

BK=4



Musical notation for BK=4. The staff shows a sequence of notes: G2, B2, G2, B2, G2, B2, G2, B2, G2, B2, G2, B2, G2, B2, G2, B2, G2, B2, G2, B2. The key signature is B-flat major (two flats) and the time signature is 3/4.

BK=5



Musical notation for BK=5. The staff shows a sequence of notes: G2, B2, G2, B2, G2, B2, G2, B2, G2, B2, G2, B2, G2, B2, G2, B2, G2, B2, G2, B2. The key signature is B-flat major (two flats) and the time signature is 3/4.

BK=6



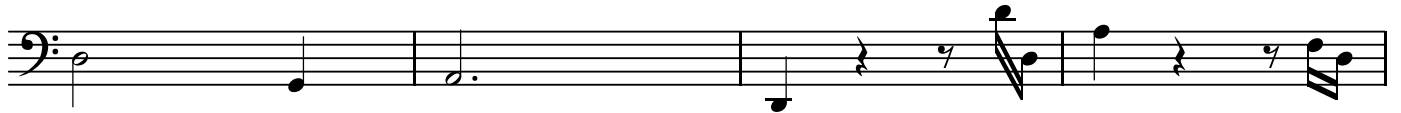
Musical notation for BK=6. The staff shows a sequence of notes: G2, B2, G2, B2, G2, B2, G2, B2, G2, B2, G2, B2, G2, B2, G2, B2, G2, B2, G2, B2. The key signature is B-flat major (two flats) and the time signature is 3/4.

BK=7



Musical notation for BK=7. The staff shows a sequence of notes: G2, B2, G2, B2, G2, B2, G2, B2, G2, B2, G2, B2, G2, B2, G2, B2, G2, B2, G2, B2. The key signature is B-flat major (two flats) and the time signature is 3/4.

BK=8



Musical notation for BK=8. The staff shows a sequence of notes: G2, B2, G2, B2, G2, B2, G2, B2, G2, B2, G2, B2, G2, B2, G2, B2, G2, B2, G2, B2. The key signature is B-flat major (two flats) and the time signature is 3/4.

BK=9



Musical notation for BK=9. The staff shows a sequence of notes: G2, B2, G2, B2, G2, B2, G2, B2, G2, B2, G2, B2, G2, B2, G2, B2, G2, B2, G2, B2. The key signature is B-flat major (two flats) and the time signature is 3/4.

BK=10



Musical notation for BK=10. The staff shows a sequence of notes: G2, B2, G2, B2, G2, B2, G2, B2, G2, B2, G2, B2, G2, B2, G2, B2, G2, B2, G2, B2. The key signature is B-flat major (two flats) and the time signature is 3/4.

BK=11



BK=12



BK=13



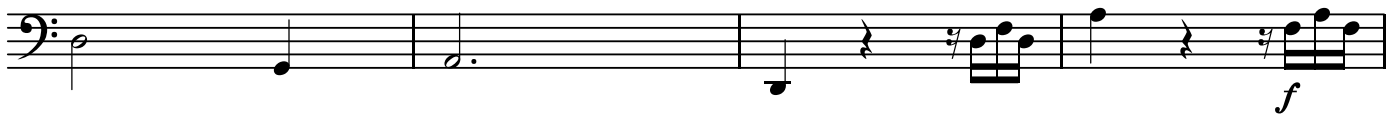
BK=14



BK=15



BK=16



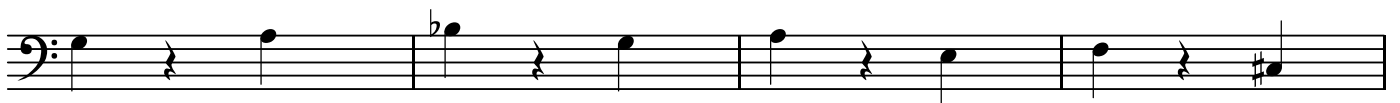
BK=17



BK=18



BK=19



BK=20



BK=21



BK=22



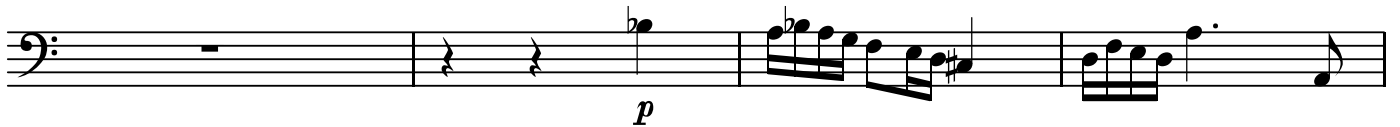
BK=23



BK=24



BK=25



BK=26



BK=27



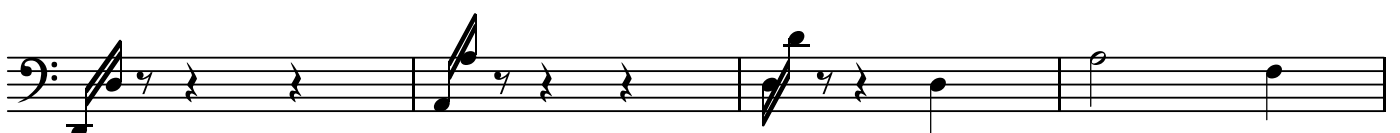
BK=28



BK=29



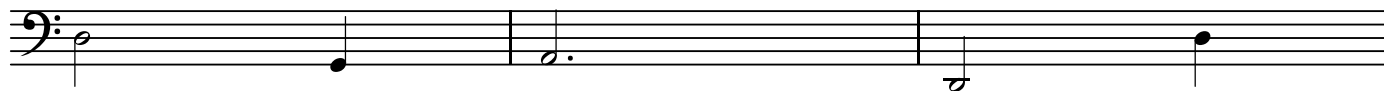
BK=30



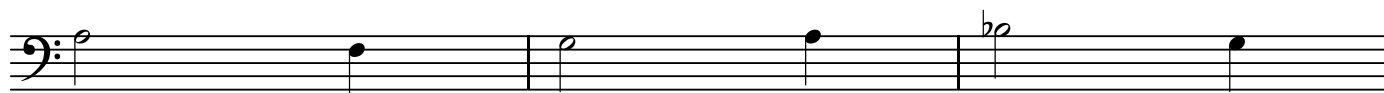
BK=31



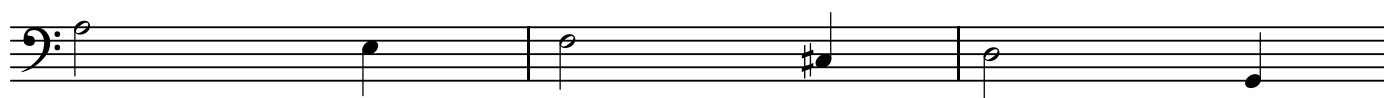
BK=32



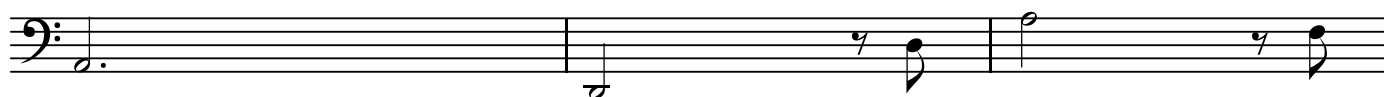
BK=33



BK=34



BK=35



BK=36



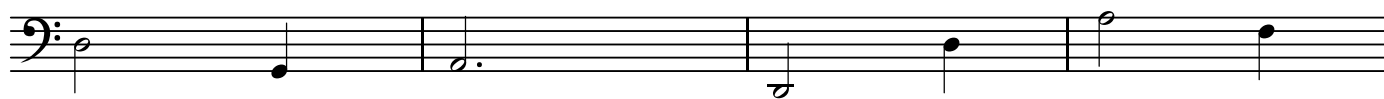
BK=37



BK=38



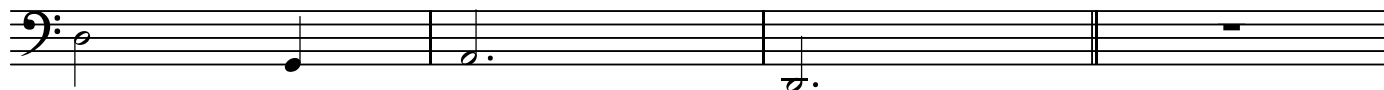
BK=39



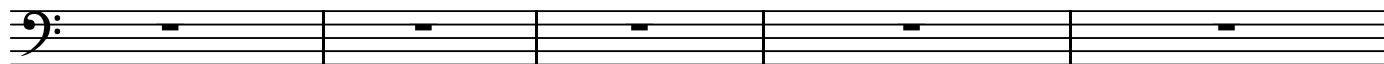
BK=40



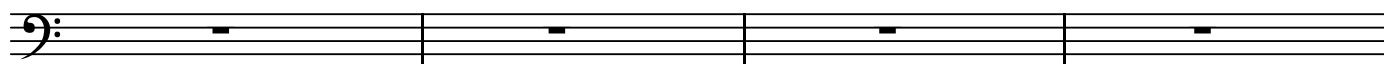
BK=41



BK=42



BK=43



BK=44



BK=45



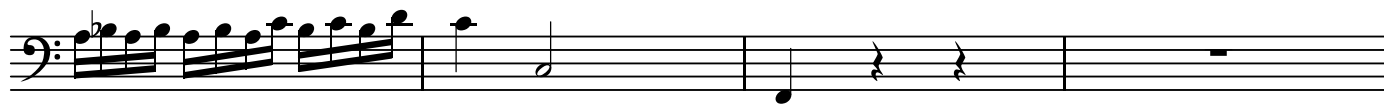
BK=46



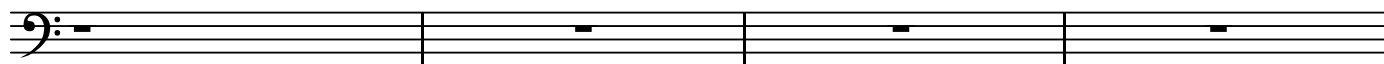
BK=47



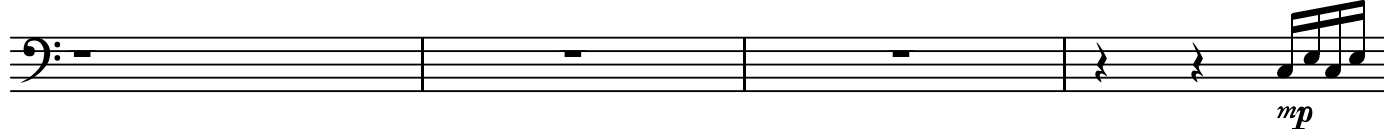
BK=48



BK=49



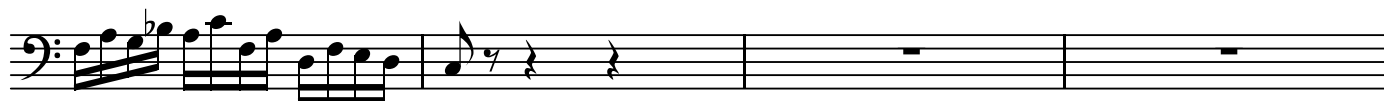
BK=50



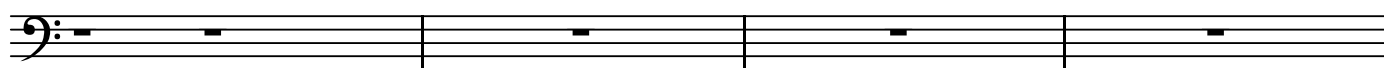
BK=51



BK=52



BK=53



BK=54



BK=55



BK=56



BK=57



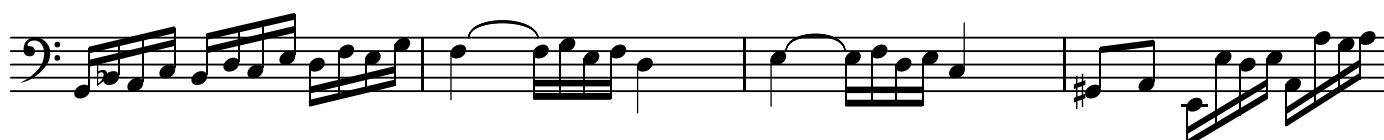
BK=58



BK=59



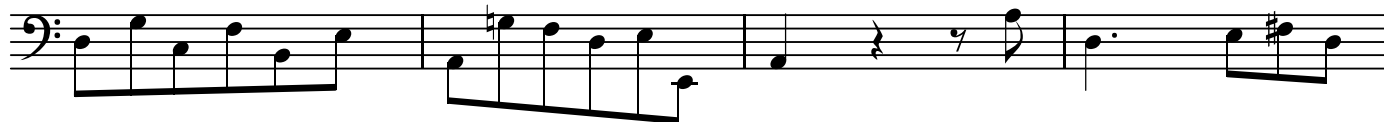
BK=60



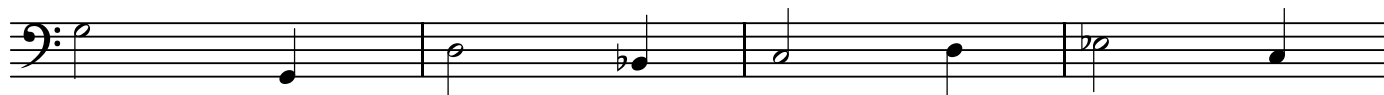
BK=61



BK=62



BK=63



BK=64



BK=65



BK=66



BK=67



BK=68



BK=69



BK=70



BK=71



BK=72

