

S1

第8番 大いなる主、おお、強き王

BK=1



BK=2



BK=3



BK=4



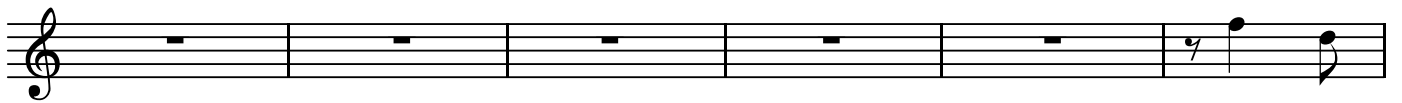
BK=5



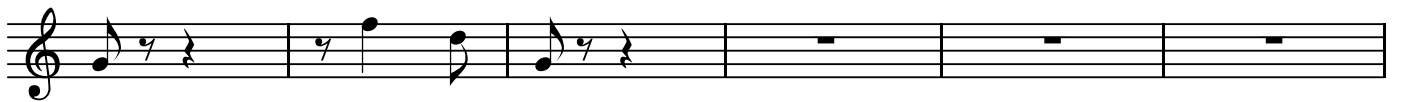
BK=6



BK=7



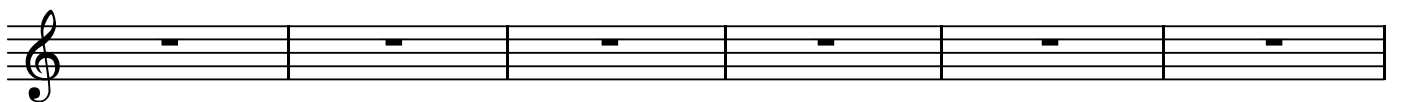
BK=8



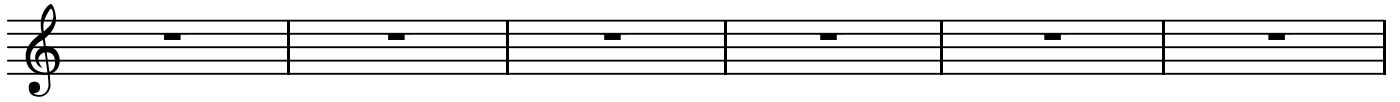
BK=9



BK=10



BK=11



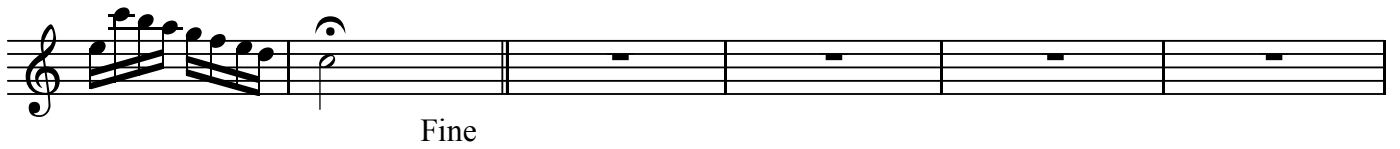
BK=12



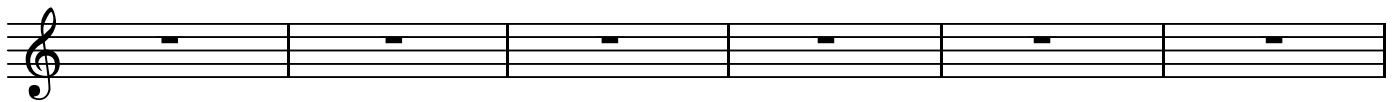
BK=13



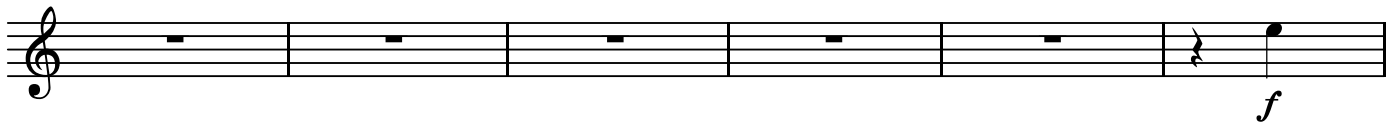
BK=14



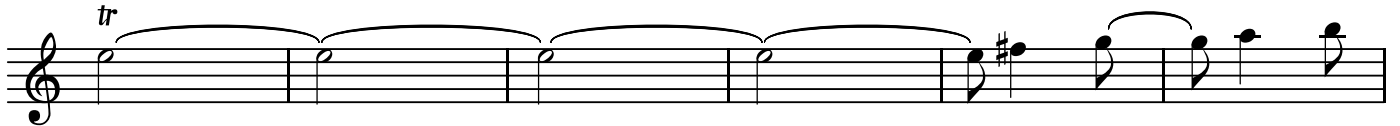
BK=15



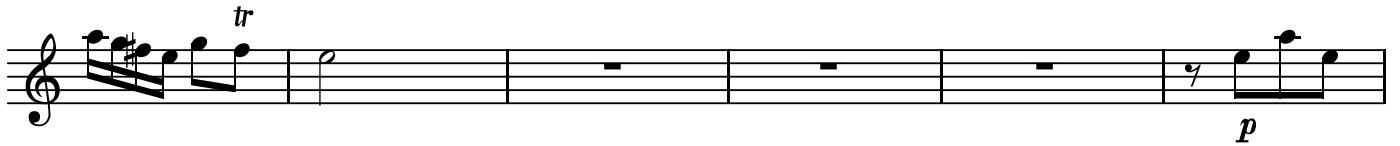
BK=16



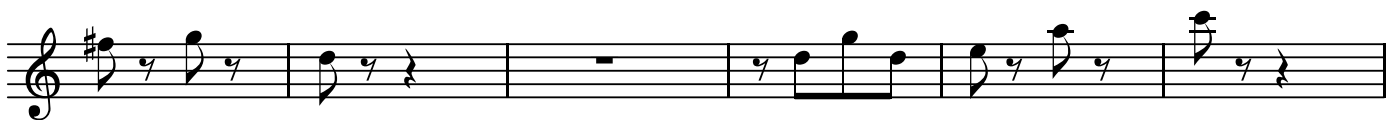
BK=17



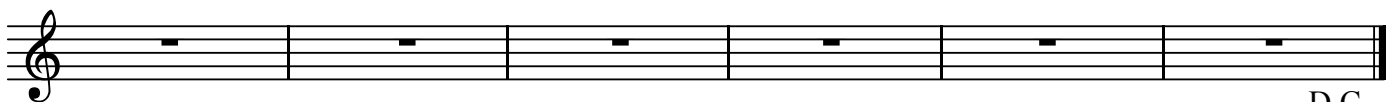
BK=18



BK=19



BK=20



D.C.

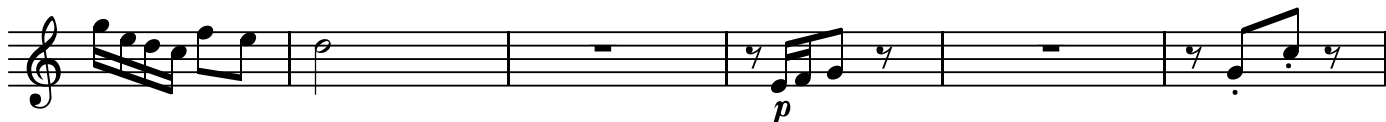
BK=1



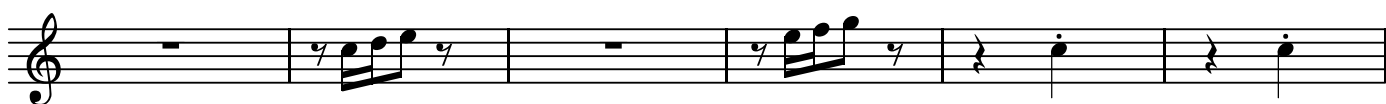
BK=2



BK=3



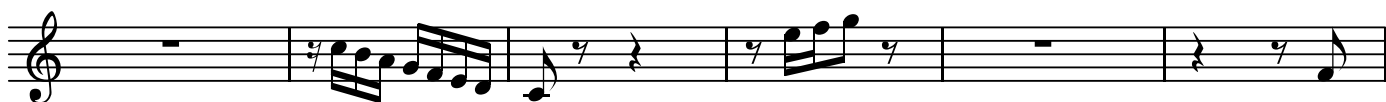
BK=4



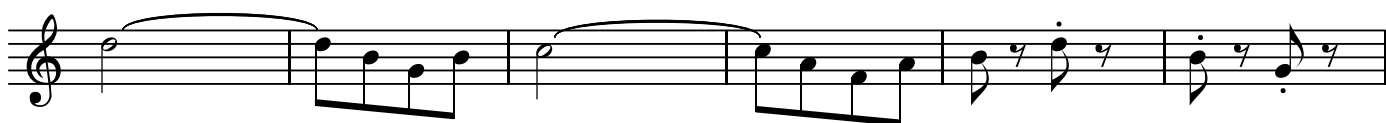
BK=5



BK=6



BK=7



BK=8



BK=9



BK=10

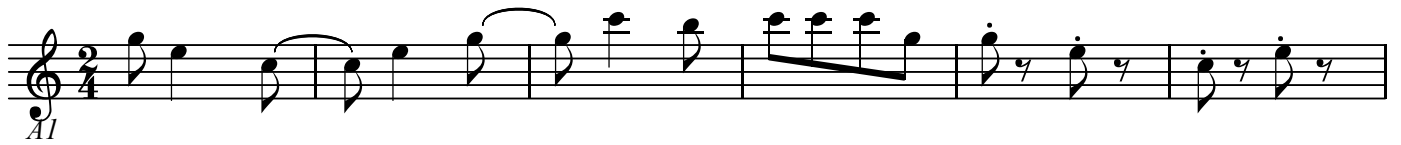




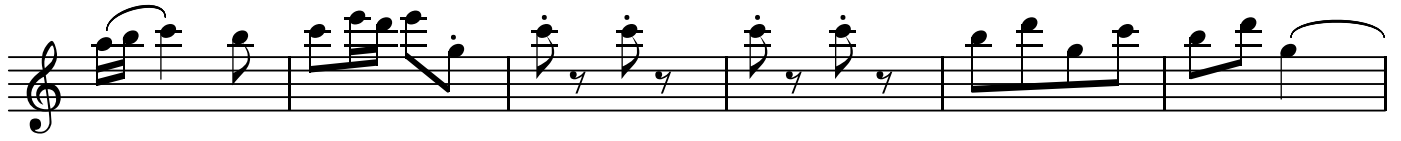
A1

第8番 大いなる主、おお、強き王

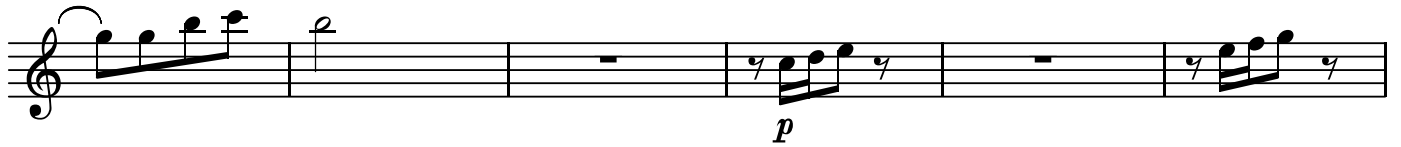
BK=1



BK=2



BK=3



BK=4



BK=5



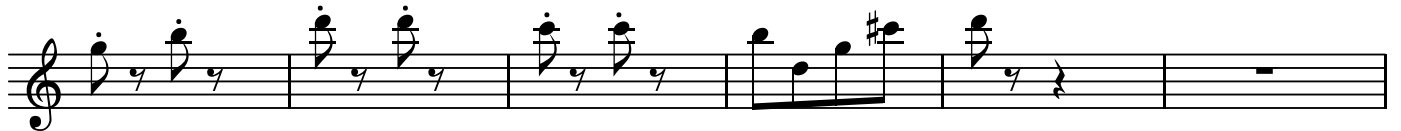
BK=6



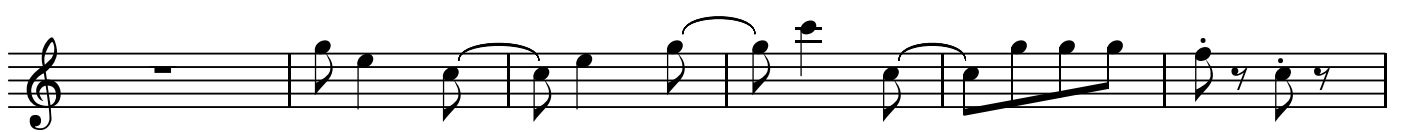
BK=7



BK=8



BK=9



BK=10



BK=11

Musical staff for BK=11. It begins with a treble clef and a 7/8 time signature. The first two measures contain eighth notes. The third measure has a half rest, followed by a half note chord. The fourth measure has a half note chord, and the fifth measure has a quarter note. The sixth and seventh measures are whole rests. A *pp* dynamic marking is placed below the third measure.

BK=12

Musical staff for BK=12. It begins with a treble clef and a 7/8 time signature. The first measure has a quarter note, followed by a half note. The second measure has a half note. The third measure has a half note. The fourth measure has a half note. The fifth measure has a half note. The sixth measure has a half note. The seventh measure has a half note. A *f* dynamic marking is placed below the first measure.

BK=13

Musical staff for BK=13. It begins with a treble clef and a 7/8 time signature. The first measure has a half note. The second measure has a half note. The third measure has a half note. The fourth measure has a half note. The fifth measure has a half note. The sixth measure has a half note. The seventh measure has a half note.

BK=14

Musical staff for BK=14. It begins with a treble clef and a 7/8 time signature. The first measure has a half note. The second measure has a half note. The third measure has a half note. The fourth measure has a half note. The fifth measure has a half note. The sixth measure has a half note. The seventh measure has a half note. A *p* dynamic marking is placed below the third measure. The word "Fine" is written below the staff.

BK=15

Musical staff for BK=15. It begins with a treble clef and a 7/8 time signature. The first measure has a half note. The second measure has a half note. The third measure has a half note. The fourth measure has a half note. The fifth measure has a half note. The sixth measure has a half note. The seventh measure has a half note.

BK=16

Musical staff for BK=16. It begins with a treble clef and a 7/8 time signature. The first six measures are whole rests. The seventh measure has a quarter note. A *f* dynamic marking is placed below the seventh measure.

BK=17

Musical staff for BK=17. It begins with a treble clef and a 7/8 time signature. The first measure has a quarter note, followed by a half note. The second measure has a half note. The third measure has a half note. The fourth measure has a half note. The fifth measure has a half note. The sixth measure has a half note. The seventh measure has a half note.

BK=18

Musical staff for BK=18. It begins with a treble clef and a 7/8 time signature. The first measure has a half note. The second measure has a half note. The third measure has a half note. The fourth measure has a half note. The fifth measure has a half note. The sixth measure has a half note. The seventh measure has a half note. A *p* dynamic marking is placed below the fifth measure.

BK=19

Musical staff for BK=19. It begins with a treble clef and a 7/8 time signature. The first two measures are whole rests. The third measure has a half note. The fourth measure has a half note. The fifth measure has a half note. The sixth measure has a half note. The seventh measure has a half note.

BK=20

Musical staff for BK=20. It begins with a treble clef and a 7/8 time signature. The first measure has a half note. The second measure has a half note. The third measure has a half note. The fourth measure has a half note. The fifth measure has a half note. The sixth measure has a half note. The seventh measure has a half note.

D.C.

A2

第8番 大いなる主、おお、強き王

BK=1



A2

BK=2



BK=3



BK=4



BK=5



BK=6



BK=7



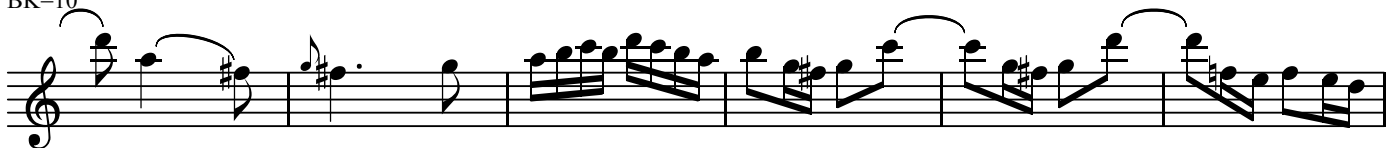
BK=8



BK=9



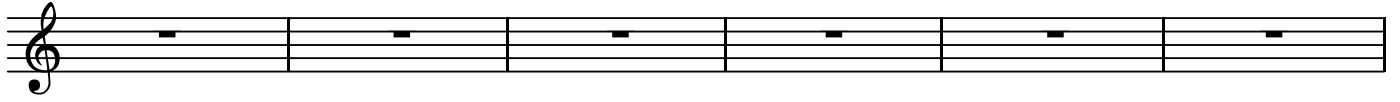
BK=10



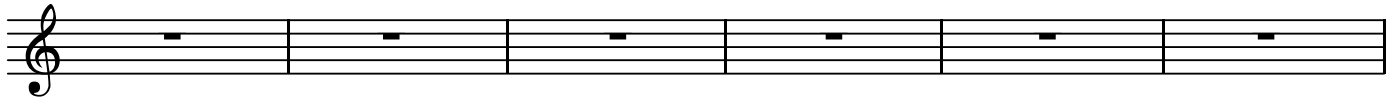
BK=11



BK=12



BK=13



BK=14



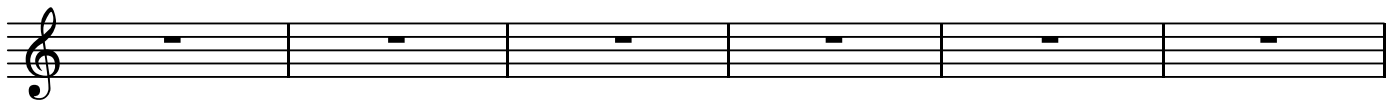
BK=15



BK=16



BK=17



BK=18



BK=19



BK=20



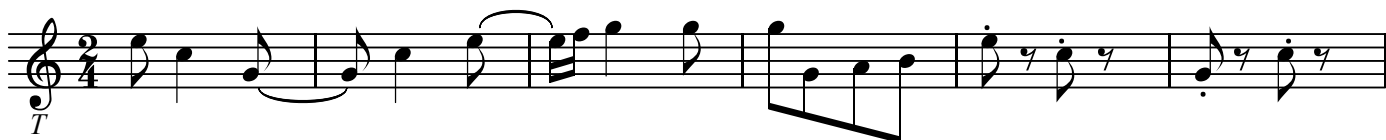
D.C.



T

第8番 大いなる主、おお、強き王

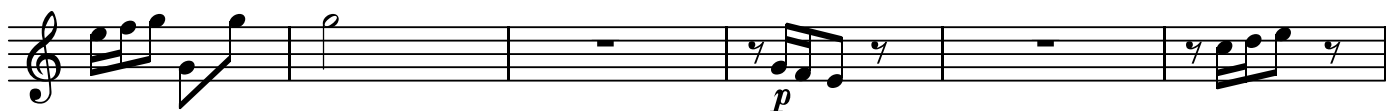
BK=1



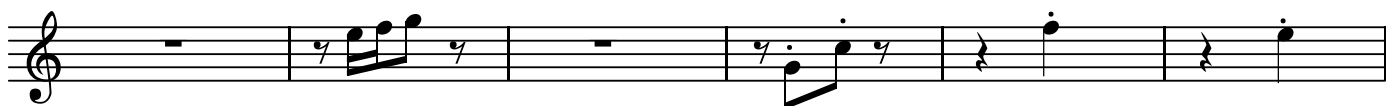
BK=2



BK=3



BK=4



BK=5



BK=6



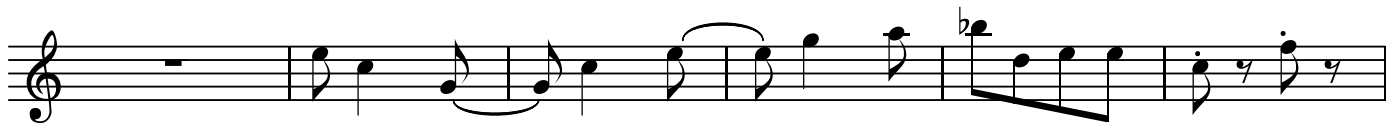
BK=7



BK=8



BK=9



BK=10

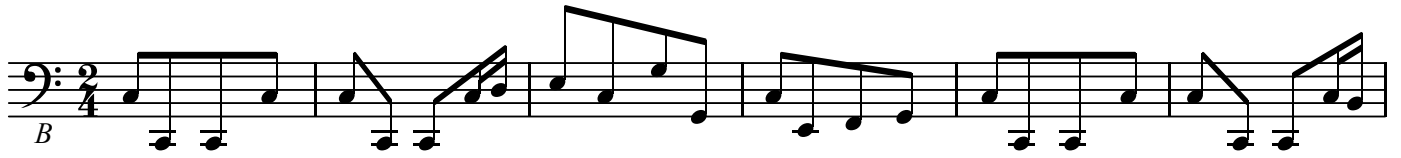




B/GB

第8番 大いなる主、おお、強き王

BK=1



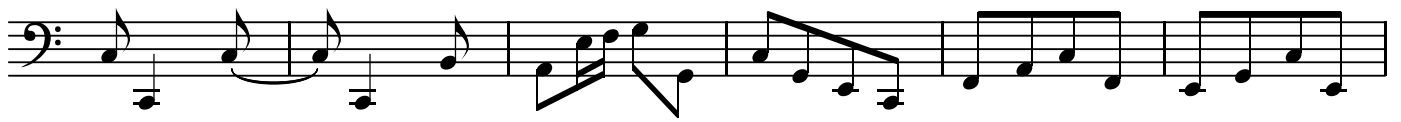
BK=2



BK=3



BK=4



BK=5



BK=6



BK=7



BK=8



BK=9



BK=10



BK=11



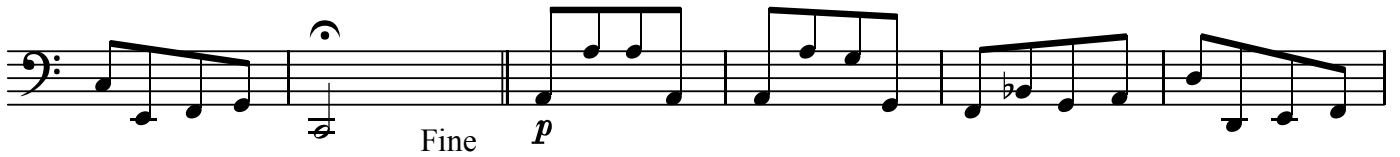
BK=12



BK=13



BK=14



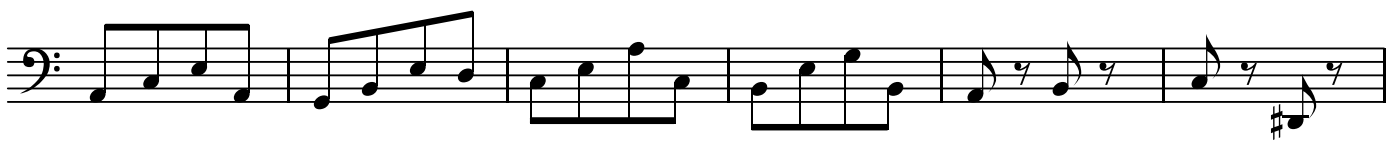
BK=15



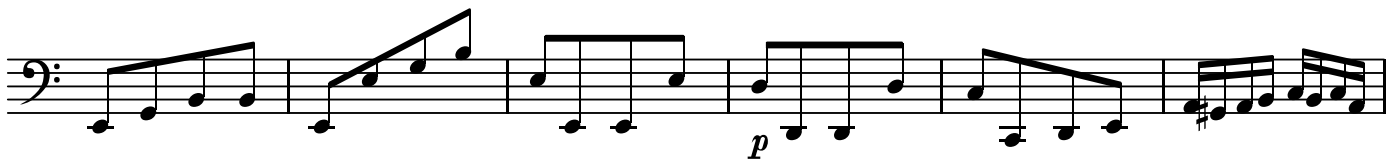
BK=16



BK=17



BK=18



BK=19



BK=20



D.C.