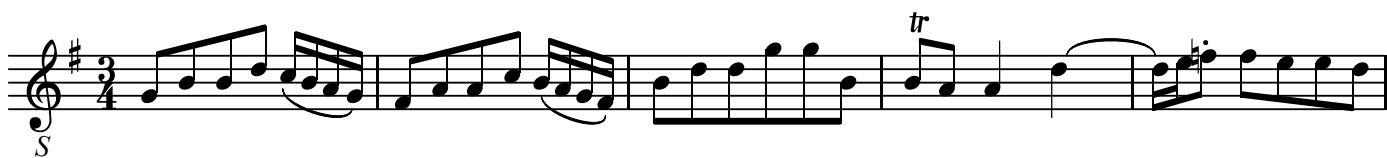


## 第7番 彼は貧しきさまにて

BK=1



BK=2



BK=3



BK=4



BK=5



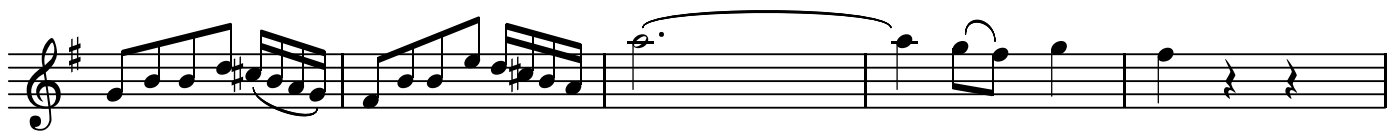
BK=6



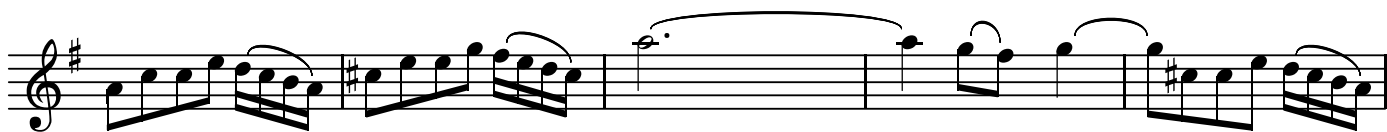
BK=7



BK=8



BK=9



BK=10

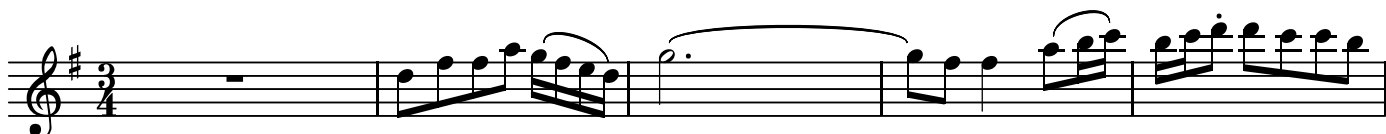




A1

第7番 彼は貧しきさまにて

BK=1



*A1*

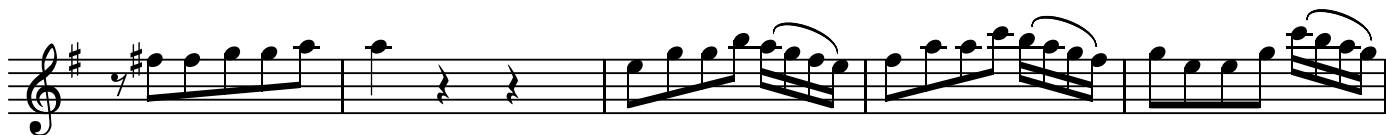
BK=2



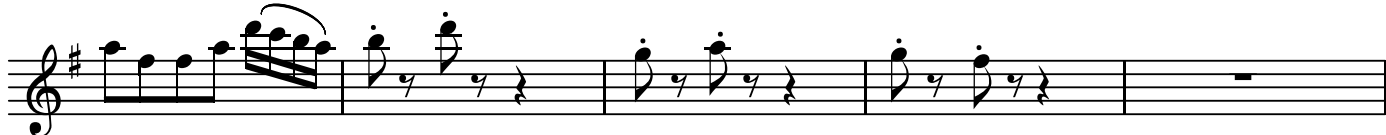
BK=3



BK=4



BK=5



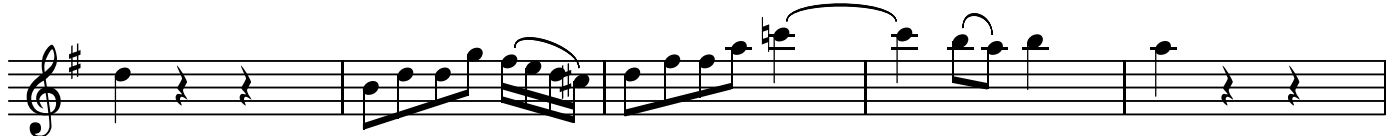
BK=6



BK=7



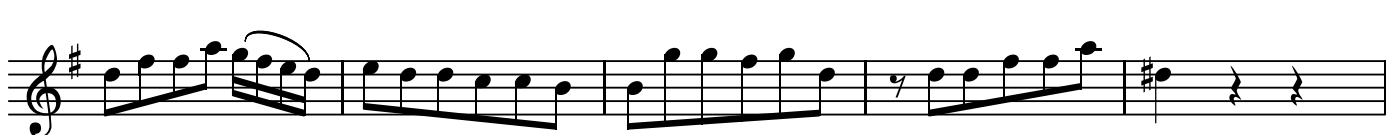
BK=8



BK=9



BK=10



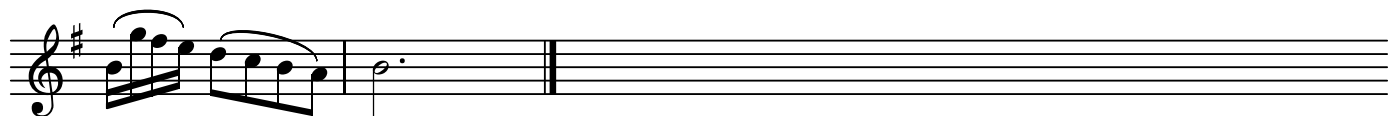
BK=11



BK=12



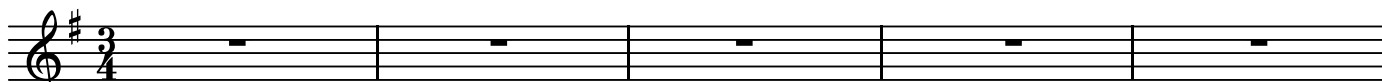
BK=13



A2

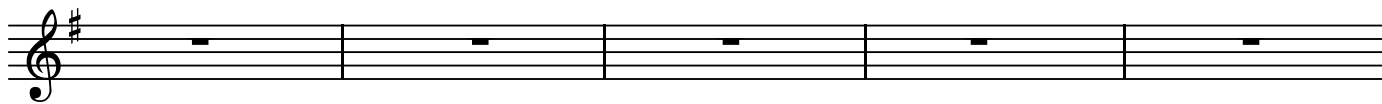
第7番 彼は貧しきさまにて

BK=1



A2

BK=2



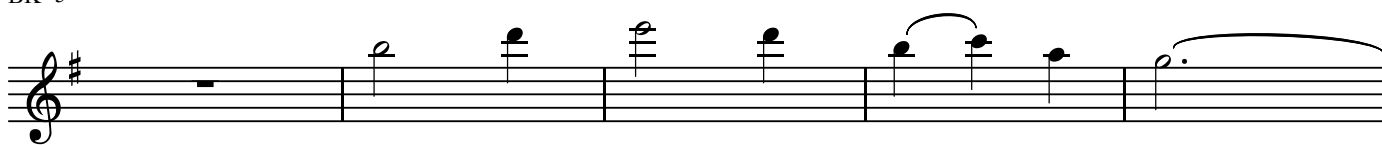
BK=3



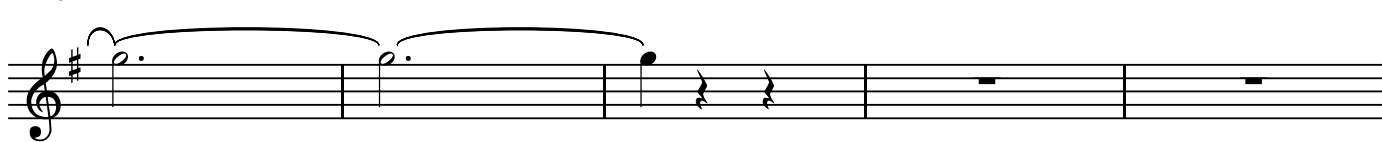
BK=4



BK=5



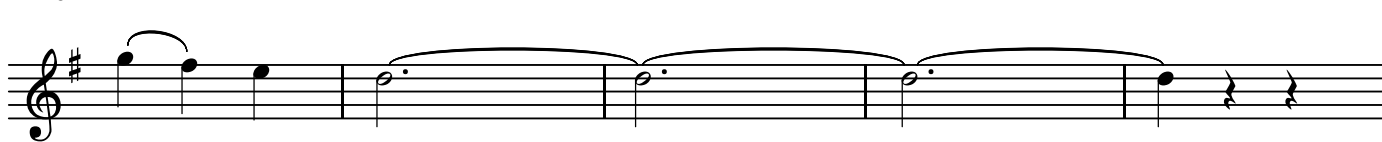
BK=6



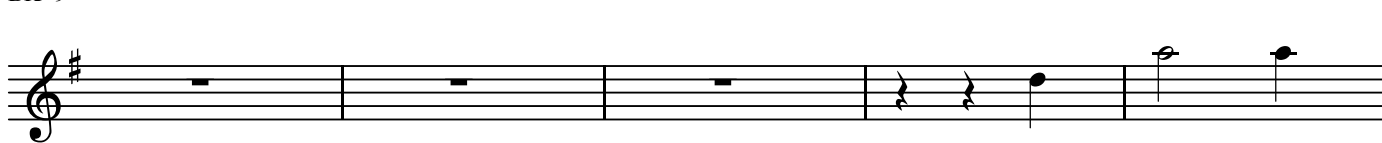
BK=7



BK=8



BK=9



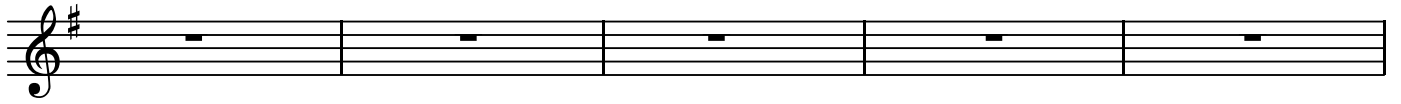
BK=10



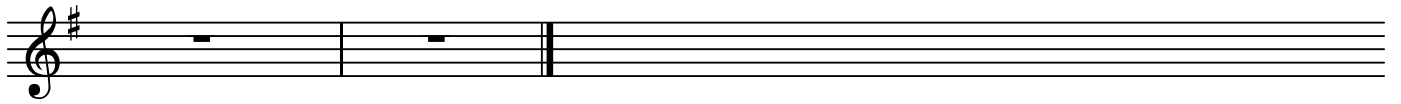
BK=11



BK=12



BK=13



BK=1

First musical staff (BK=1) in bass clef, key of D major, 3/4 time. It begins with a whole rest, followed by a series of eighth and sixteenth notes, including a triplet of eighth notes. A dynamic marking 'B' is present below the staff.

BK=2

Second musical staff (BK=2) continuing the bass line with eighth and sixteenth notes.

BK=3

Third musical staff (BK=3) featuring a triplet of eighth notes and a sixteenth-note triplet.

BK=4

Fourth musical staff (BK=4) with a half rest followed by eighth and sixteenth notes.

BK=5

Fifth musical staff (BK=5) with eighth and sixteenth notes.

BK=6

Sixth musical staff (BK=6) with eighth and sixteenth notes.

BK=7

Seventh musical staff (BK=7) with eighth and sixteenth notes.

BK=8

Eighth musical staff (BK=8) with eighth and sixteenth notes.

BK=9

Ninth musical staff (BK=9) with eighth and sixteenth notes.

BK=10

Tenth musical staff (BK=10) with eighth and sixteenth notes.

BK=11



BK=12



BK=13

