

第62番 さらば汝ら勝ち誇れる敵ども、脅かせし

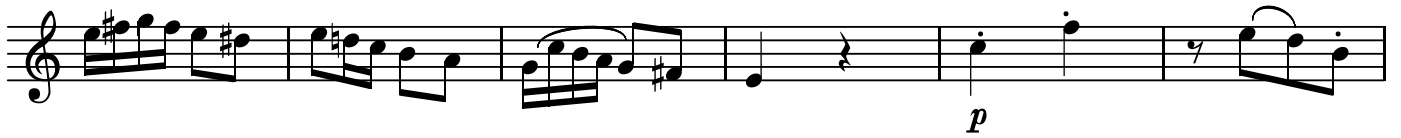
BK=1 Moderato



BK=2



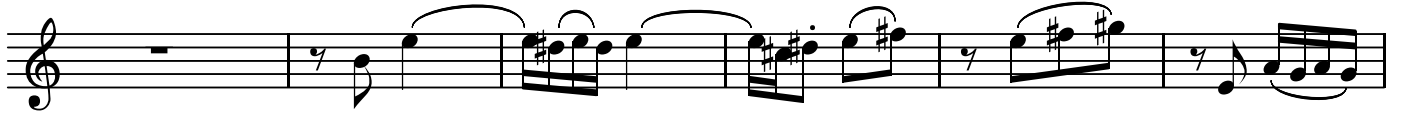
BK=3



BK=4



BK=5



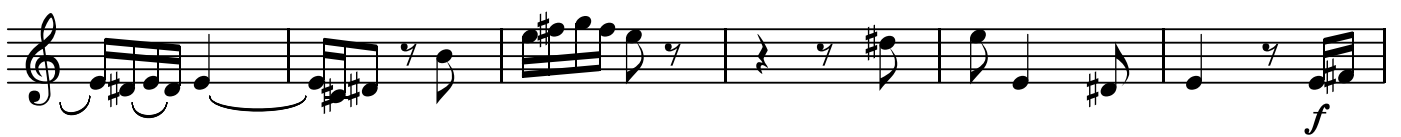
BK=6



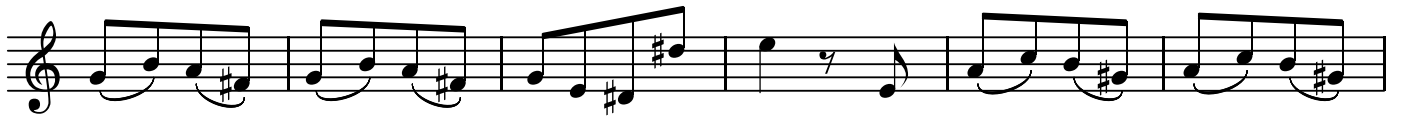
BK=7



BK=8



BK=9



BK=10



BK=11



BK=12



BK=13



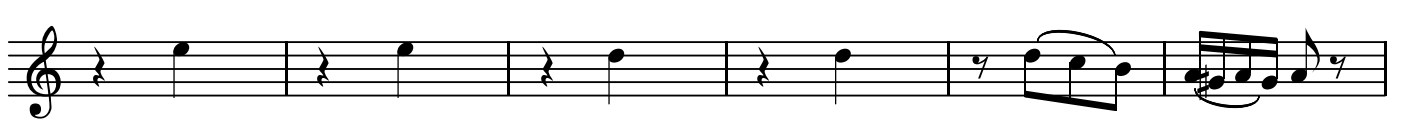
BK=14



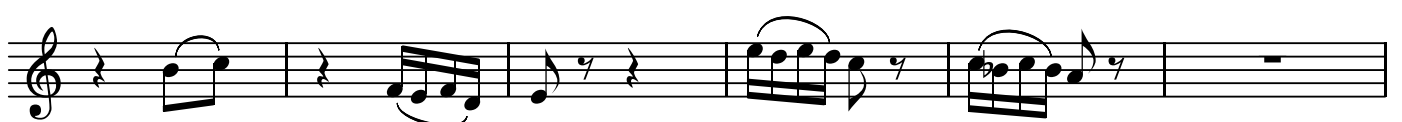
BK=15



BK=16



BK=17



BK=18



BK=19



BK=20



BK=21



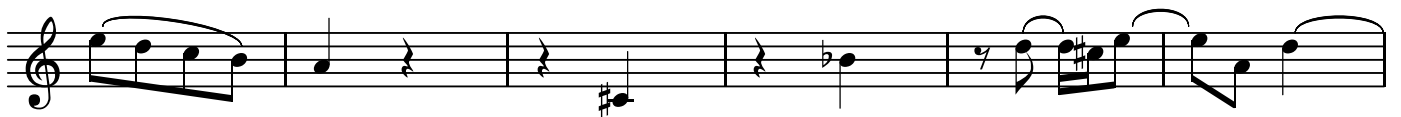
BK=22



BK=23



BK=24



BK=25



BK=26



BK=27



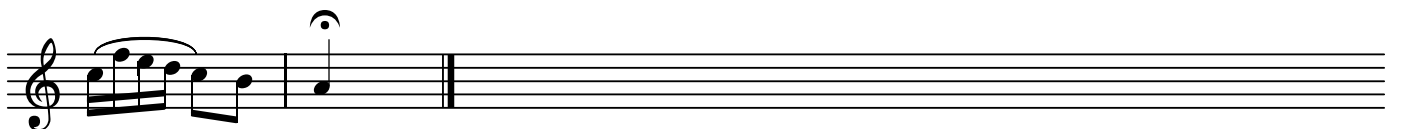
BK=28



BK=29



BK=30



A

第62番 さらば汝ら勝ち誇れる敵ども、脅かせし

BK=1

Musical staff BK=1, starting with a treble clef and a 2/4 time signature. The staff contains a sequence of eighth and sixteenth notes, some beamed together. A dynamic marking 'p' is placed below the staff towards the end of the line.

BK=2

Musical staff BK=2, continuing the melodic line with various note values and rests. A dynamic marking 'f' is placed below the staff, and a trill marking 'tr' is placed above a note near the end of the line.

BK=3

Musical staff BK=3, featuring a mix of eighth and sixteenth notes. A dynamic marking 'p' is placed below the staff.

BK=4

Musical staff BK=4, showing a continuation of the melodic pattern with eighth and sixteenth notes.

BK=5

Musical staff BK=5, containing a series of beamed eighth and sixteenth notes.

BK=6

Musical staff BK=6, featuring a melodic line with eighth and sixteenth notes and rests.

BK=7

Musical staff BK=7, showing a melodic line with eighth and sixteenth notes and rests.

BK=8

Musical staff BK=8, containing a melodic line with eighth and sixteenth notes. A dynamic marking 'f' is placed below the staff at the end of the line.

BK=9

Musical staff BK=9, featuring a melodic line with eighth and sixteenth notes.

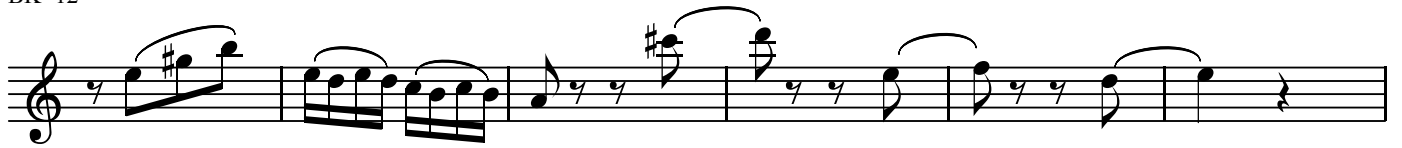
BK=10

Musical staff BK=10, showing a melodic line with eighth and sixteenth notes.

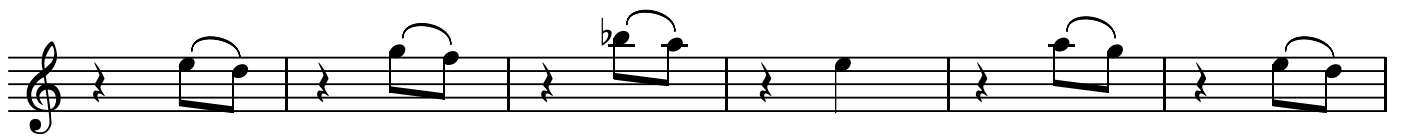
BK=11



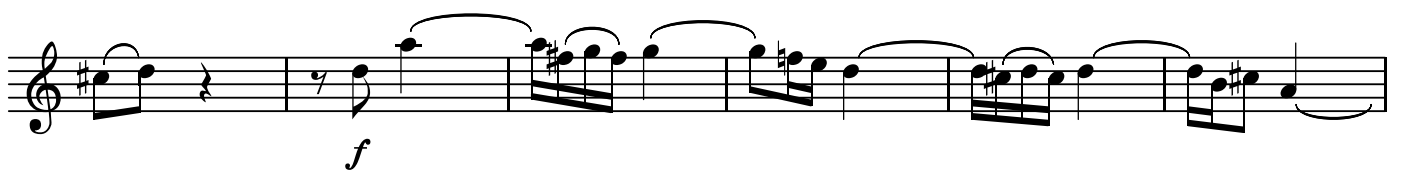
BK=12



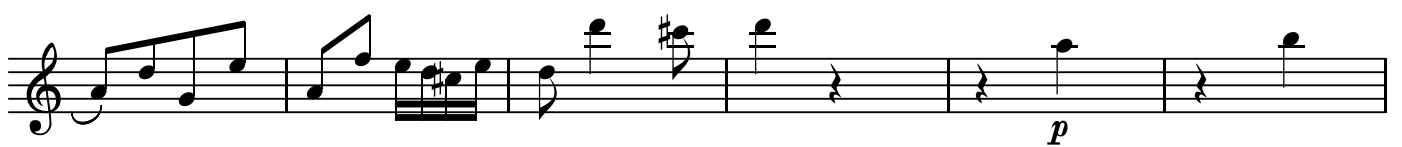
BK=13



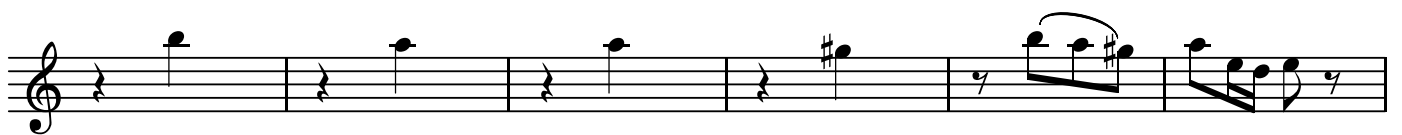
BK=14



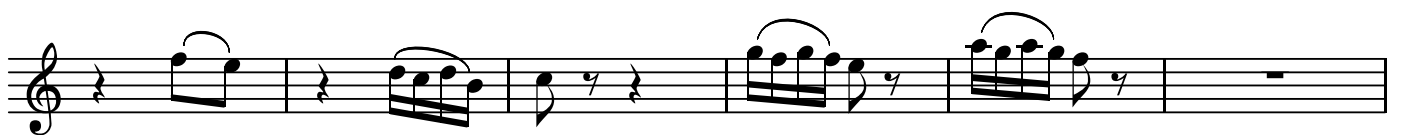
BK=15



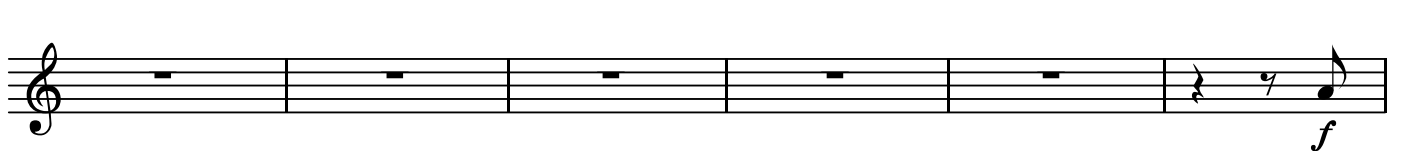
BK=16



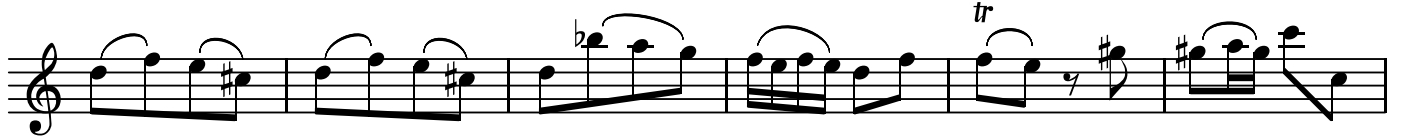
BK=17



BK=18



BK=19



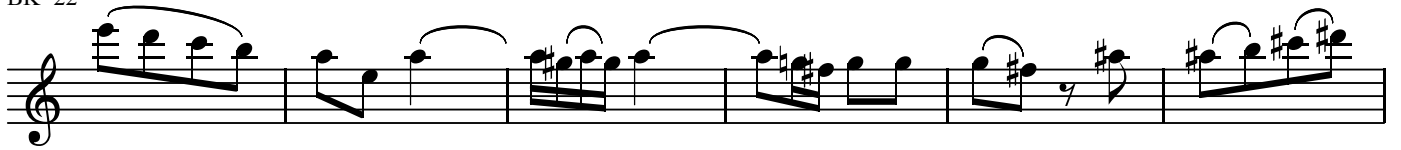
BK=20



BK=21



BK=22



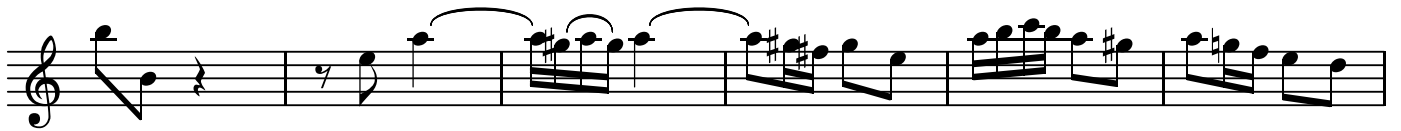
BK=23



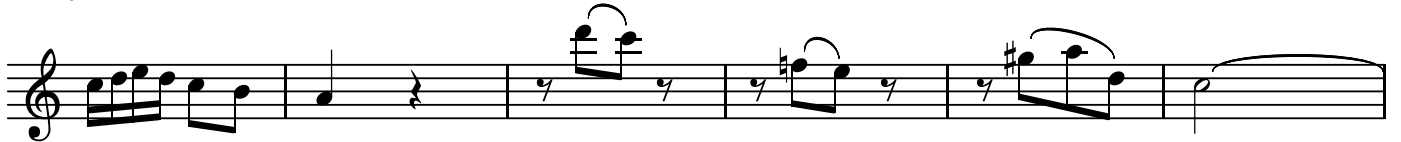
BK=24



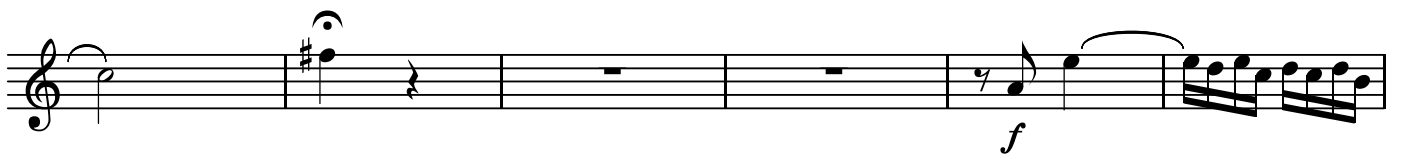
BK=25



BK=26



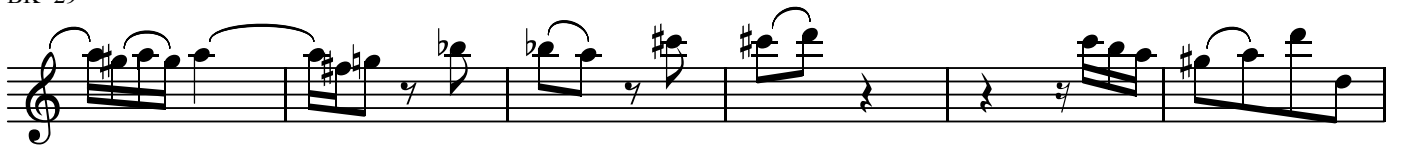
BK=27



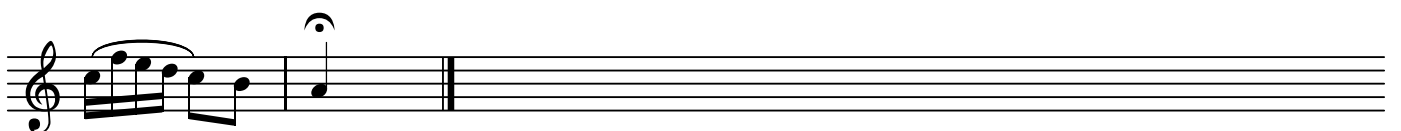
BK=28



BK=29



BK=30



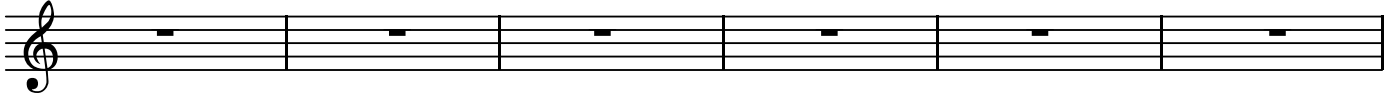
T

第62番 さらば汝ら勝ち誇れる敵ども、脅かせし

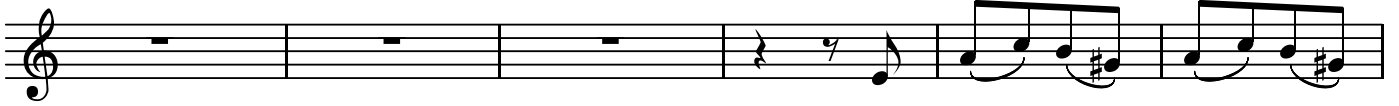
BK=1



BK=2



BK=3



BK=4



BK=5



BK=6



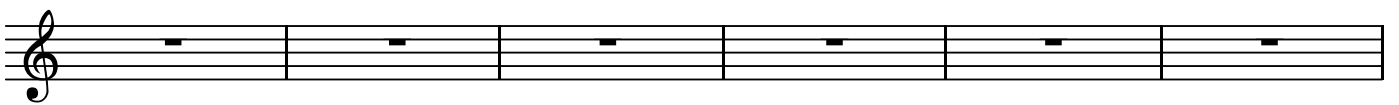
BK=7



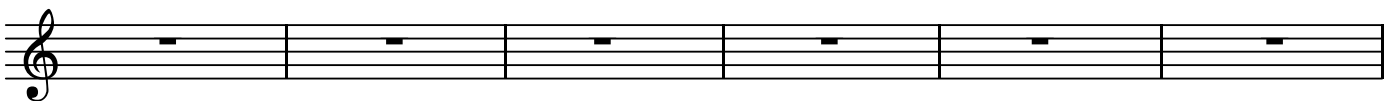
BK=8



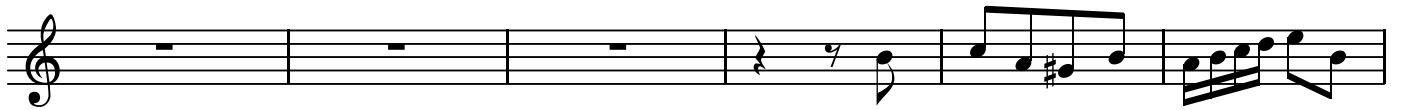
BK=9



BK=10



BK=11



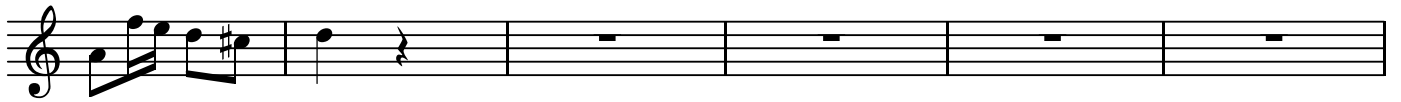
BK=12



BK=13



BK=14



BK=15



BK=16



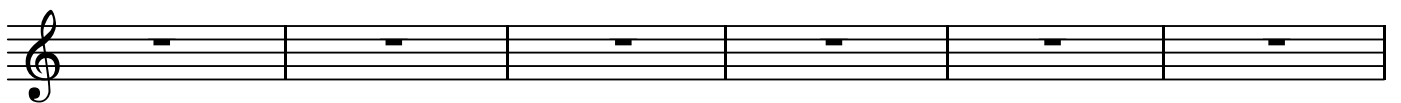
BK=17



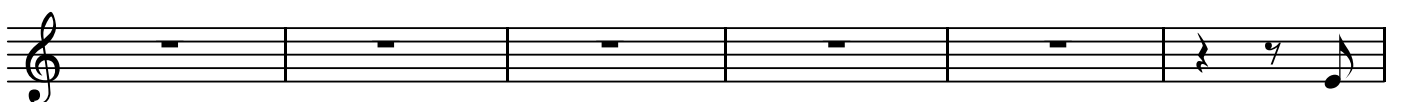
BK=18



BK=19



BK=20



BK=21



BK=22



BK=23



BK=24



BK=25



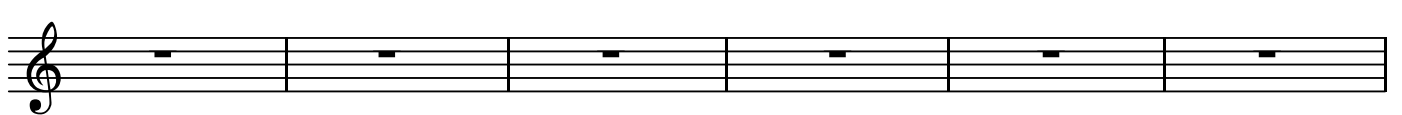
BK=26



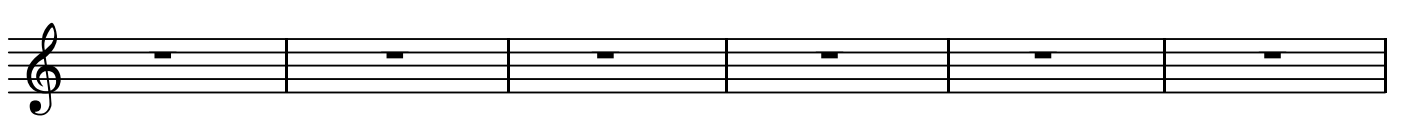
BK=27



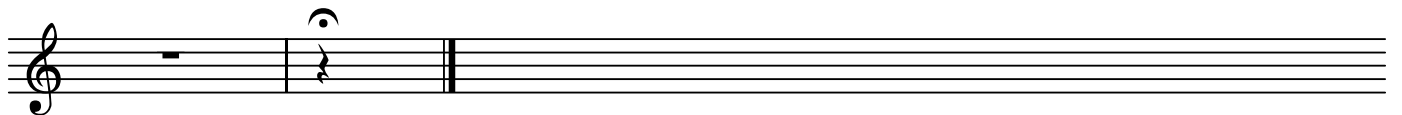
BK=28



BK=29



BK=30



GB

第62番 さらば汝ら勝ち誇れる敵ども、脅かせし

BK=1

GB

p

Musical staff for BK=1, starting with a bass clef and a 7/8 time signature. The staff contains several measures of music, including rests and notes. The dynamic marking *p* is present.

BK=2

f

Musical staff for BK=2, continuing the piece. The dynamic marking *f* is present.

BK=3

p

Musical staff for BK=3, continuing the piece. The dynamic marking *p* is present.

BK=4

Musical staff for BK=4, continuing the piece.

BK=5

Musical staff for BK=5, continuing the piece.

BK=6

Musical staff for BK=6, continuing the piece.

BK=7

Musical staff for BK=7, continuing the piece.

BK=8

Musical staff for BK=8, continuing the piece.

BK=9

Musical staff for BK=9, continuing the piece.

BK=10

Musical staff for BK=10, continuing the piece.

BK=11



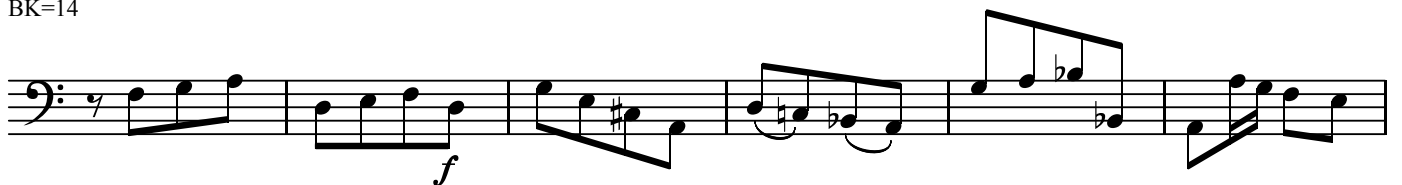
BK=12



BK=13



BK=14



BK=15



BK=16



BK=17



BK=18



BK=19



BK=20

