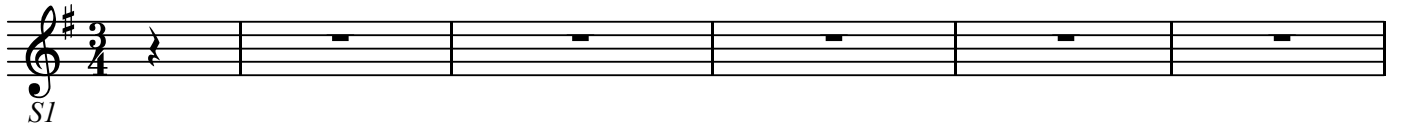


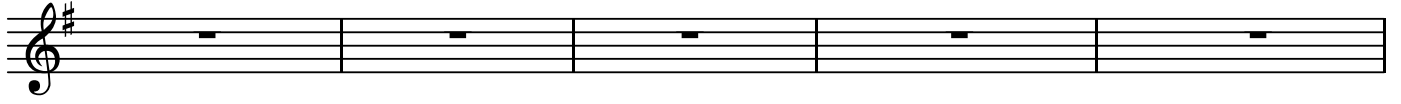
S1

第57番 その御手のひとふりは無力なる人の子らの勢力を倒す

BK=1 Andante



BK=2



BK=3



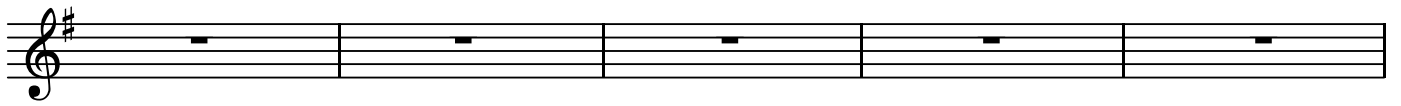
BK=4



BK=5



BK=6



BK=7



BK=8



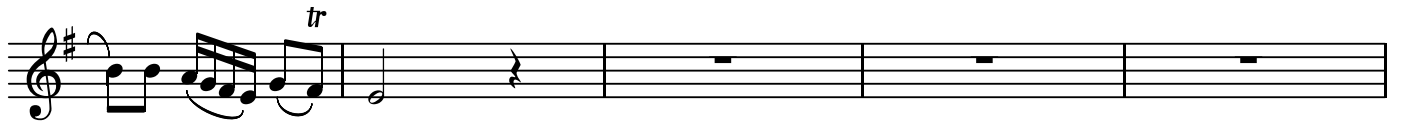
BK=9



BK=10



BK=11



BK=12



BK=13



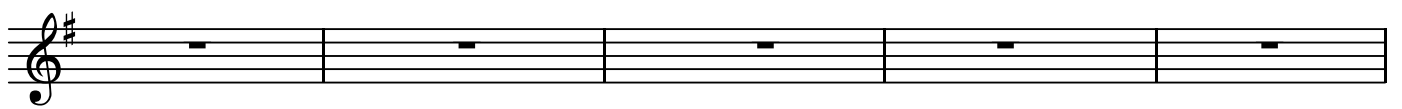
BK=14



BK=15



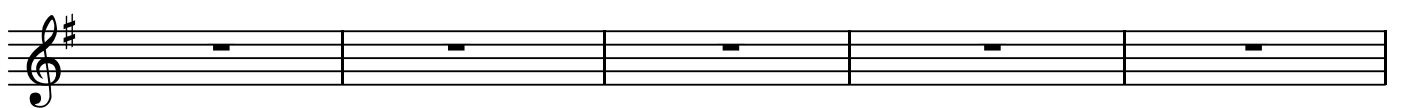
BK=16



BK=17



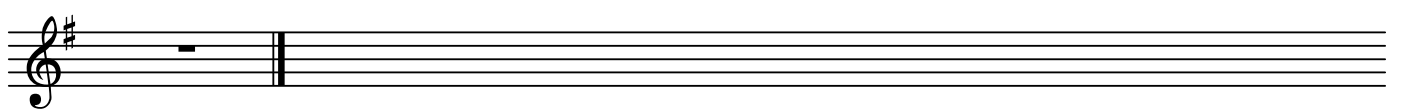
BK=18



BK=19



BK=20



BK=1

Musical staff for BK=1, featuring a treble clef, a key signature of one sharp (F#), and a 3/4 time signature. The staff contains a melodic line with eighth and sixteenth notes, including a trill (tr) and a dynamic marking of *p* (piano).

BK=2

Musical staff for BK=2, featuring a treble clef, a key signature of one sharp (F#), and a 3/4 time signature. The staff contains a melodic line with eighth and sixteenth notes, including a trill (tr) and a dynamic marking of *f* (forte).

BK=3

Musical staff for BK=3, featuring a treble clef, a key signature of one sharp (F#), and a 3/4 time signature. The staff contains a melodic line with eighth and sixteenth notes, including a dynamic marking of *p* (piano).

BK=4

Musical staff for BK=4, featuring a treble clef, a key signature of one sharp (F#), and a 3/4 time signature. The staff contains a melodic line with eighth and sixteenth notes, including a trill (tr).

BK=5

Musical staff for BK=5, featuring a treble clef, a key signature of one sharp (F#), and a 3/4 time signature. The staff contains a melodic line with eighth and sixteenth notes, including a dynamic marking of *f* (forte).

BK=6

Musical staff for BK=6, featuring a treble clef, a key signature of one sharp (F#), and a 3/4 time signature. The staff contains a melodic line with eighth and sixteenth notes, including a trill (tr).

BK=7

Musical staff for BK=7, featuring a treble clef, a key signature of one sharp (F#), and a 3/4 time signature. The staff contains a melodic line with eighth and sixteenth notes, including a trill (tr).

BK=8

Musical staff for BK=8, featuring a treble clef, a key signature of one sharp (F#), and a 3/4 time signature. The staff contains a melodic line with eighth and sixteenth notes, including a trill (tr).

BK=9

Musical staff for BK=9, featuring a treble clef, a key signature of one sharp (F#), and a 3/4 time signature. The staff contains a melodic line with eighth and sixteenth notes.

BK=10

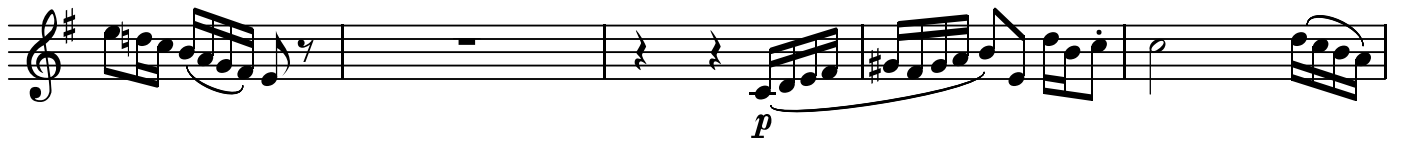
Musical staff for BK=10, featuring a treble clef, a key signature of one sharp (F#), and a 3/4 time signature. The staff contains a melodic line with eighth and sixteenth notes, including a trill (tr).

BK=11



Musical notation for BK=11, featuring a treble clef, a key signature of one sharp (F#), and a 4/4 time signature. The piece begins with a trill (tr) on the first note, followed by a series of eighth and sixteenth notes. A forte (f) dynamic marking is present below the staff.

BK=12



Musical notation for BK=12, featuring a treble clef, a key signature of one sharp (F#), and a 4/4 time signature. The piece starts with a rest, followed by a series of eighth and sixteenth notes. A piano (p) dynamic marking is present below the staff.

BK=13



Musical notation for BK=13, featuring a treble clef, a key signature of one sharp (F#), and a 4/4 time signature. The piece consists of eighth and sixteenth notes with various rests.

BK=14



Musical notation for BK=14, featuring a treble clef, a key signature of one sharp (F#), and a 4/4 time signature. The piece includes eighth and sixteenth notes, a forte (f) dynamic marking, and a trill (tr) on the final note.

BK=15



Musical notation for BK=15, featuring a treble clef, a key signature of one sharp (F#), and a 4/4 time signature. The piece consists of eighth and sixteenth notes with a trill (tr) on the final note.

BK=16



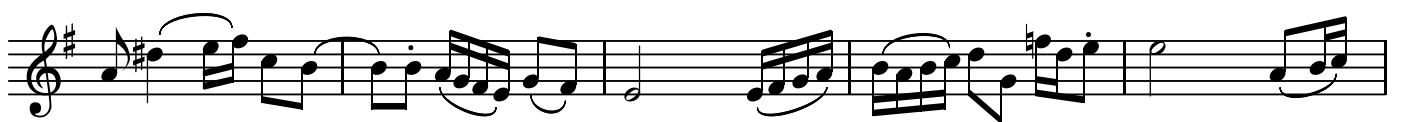
Musical notation for BK=16, featuring a treble clef, a key signature of one sharp (F#), and a 4/4 time signature. The piece consists of eighth and sixteenth notes.

BK=17



Musical notation for BK=17, featuring a treble clef, a key signature of one sharp (F#), and a 4/4 time signature. The piece includes eighth and sixteenth notes with a trill (tr) on the final note.

BK=18



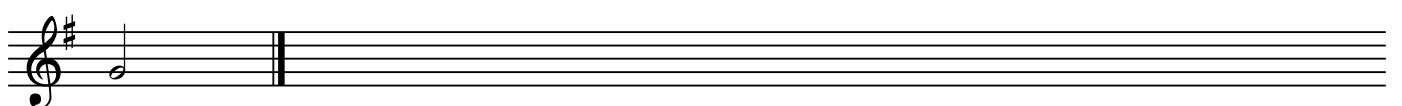
Musical notation for BK=18, featuring a treble clef, a key signature of one sharp (F#), and a 4/4 time signature. The piece consists of eighth and sixteenth notes.

BK=19



Musical notation for BK=19, featuring a treble clef, a key signature of one sharp (F#), and a 4/4 time signature. The piece consists of eighth and sixteenth notes with a trill (tr) on the final note.

BK=20



Musical notation for BK=20, featuring a treble clef, a key signature of one sharp (F#), and a 4/4 time signature. The piece consists of a single quarter note followed by a double bar line.

A

第57番 その御手のひとふりは無力なる人の子らの勢力を倒す

BK=1

Musical staff BK=1, starting with a treble clef, a key signature of one sharp (F#), and a 3/4 time signature. The staff contains a melodic line with various note values and rests. Dynamics include a forte *f* marking and a piano *p* marking.

BK=2

Musical staff BK=2, continuing the melodic line from BK=1. It features a forte *f* dynamic marking.

BK=3

Musical staff BK=3, continuing the melodic line. It features a piano *p* dynamic marking.

BK=4

Musical staff BK=4, continuing the melodic line. It includes a trill *tr* marking.

BK=5

Musical staff BK=5, continuing the melodic line. It features a forte *f* dynamic marking.

BK=6

Musical staff BK=6, continuing the melodic line.

BK=7

Musical staff BK=7, continuing the melodic line.

BK=8

Musical staff BK=8, continuing the melodic line.

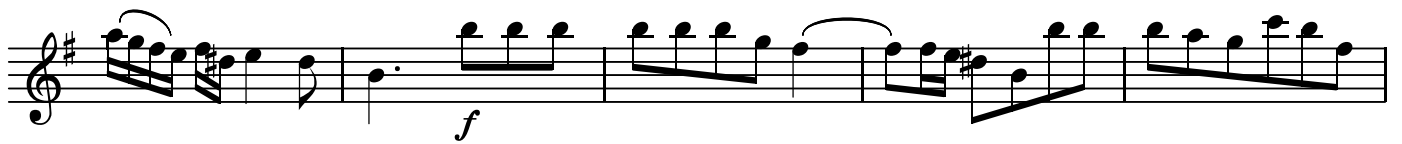
BK=9

Musical staff BK=9, continuing the melodic line. It features a piano *p* dynamic marking.

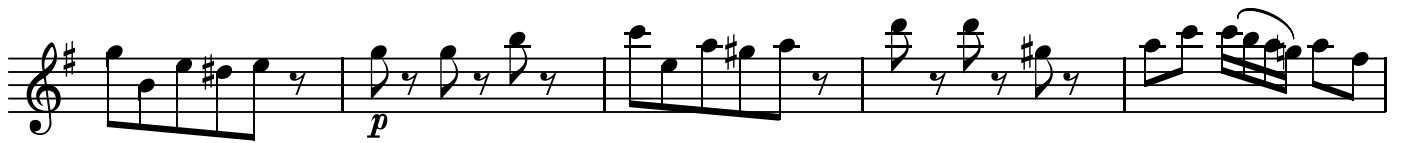
BK=10

Musical staff BK=10, continuing the melodic line.

BK=11



BK=12



BK=13



BK=14



BK=15



BK=16



BK=17



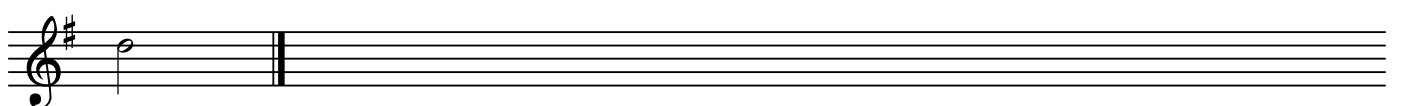
BK=18



BK=19



BK=20



T

第57番 その御手のひとふりは無力なる人の子らの勢力を倒す

BK=1



BK=2



BK=3



BK=4



BK=5



BK=6



BK=7



BK=8



BK=9



BK=10



BK=11



BK=12



BK=13



BK=14



BK=15



BK=16



BK=17



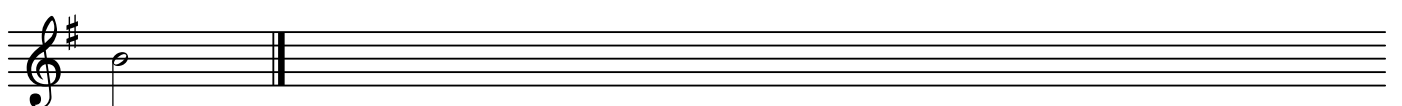
BK=18



BK=19



BK=20





B

第57番 その御手のひとふりは無力なる人の子らの勢力を倒す

BK=1

First musical staff (BK=1) in bass clef, 3/4 time, key of D major. It begins with a dynamic marking *B* and ends with *p*. The melody consists of eighth and quarter notes with some slurs.

BK=2

Second musical staff (BK=2) in bass clef, 3/4 time, key of D major. It features a dynamic marking *f* and continues the melodic line with eighth and quarter notes.

BK=3

Third musical staff (BK=3) in bass clef, 3/4 time, key of D major. It features a dynamic marking *p* and includes some sixteenth-note passages.

BK=4

Fourth musical staff (BK=4) in bass clef, 3/4 time, key of D major. It continues the melodic development with eighth and quarter notes.

BK=5

Fifth musical staff (BK=5) in bass clef, 3/4 time, key of D major. It features a dynamic marking *f* and includes some sixteenth-note passages.

BK=6

Sixth musical staff (BK=6) in bass clef, 3/4 time, key of D major. It continues the melodic line with eighth and quarter notes.

BK=7

Seventh musical staff (BK=7) in bass clef, 3/4 time, key of D major. It continues the melodic line with eighth and quarter notes.

BK=8

Eighth musical staff (BK=8) in bass clef, 3/4 time, key of D major. It features a dynamic marking *p* and includes some slurs.

BK=9

Ninth musical staff (BK=9) in bass clef, 3/4 time, key of D major. It continues the melodic line with eighth and quarter notes.

BK=10

Tenth musical staff (BK=10) in bass clef, 3/4 time, key of D major. It concludes the melodic line with eighth and quarter notes.

