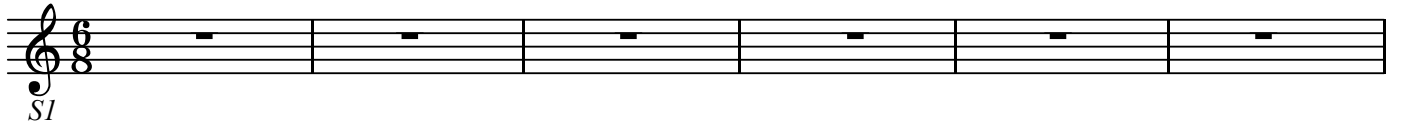
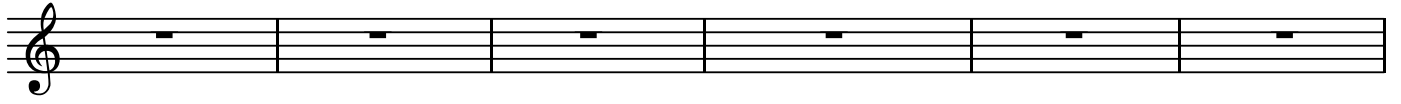


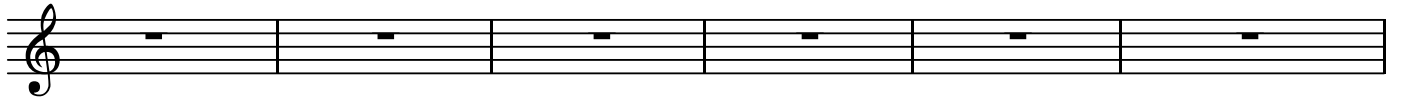
BK=1



BK=2



BK=3



BK=4



BK=5



BK=6



BK=7



BK=8



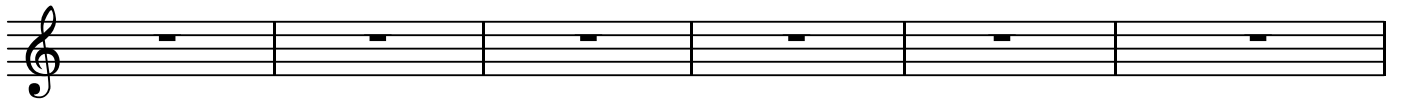
BK=9



BK=10



BK=11



BK=12



BK=13



BK=14



BK=15



BK=16



BK=17



BK=18



BK=19

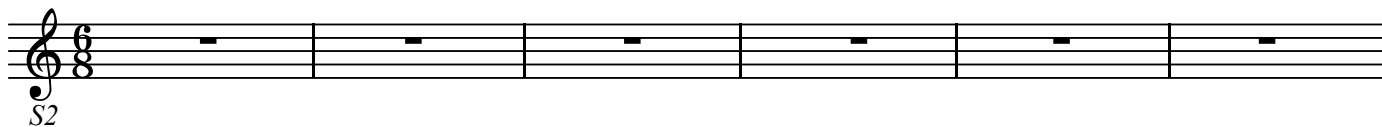


BK=20



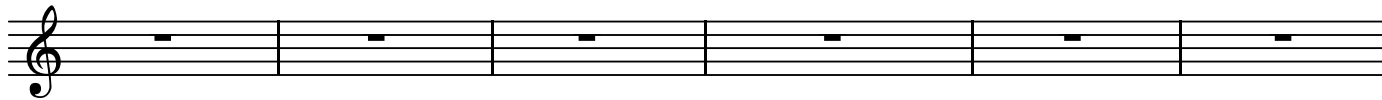


BK=1

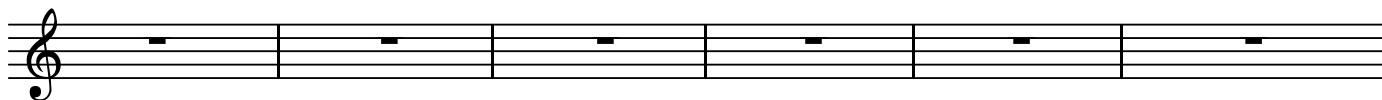


S2

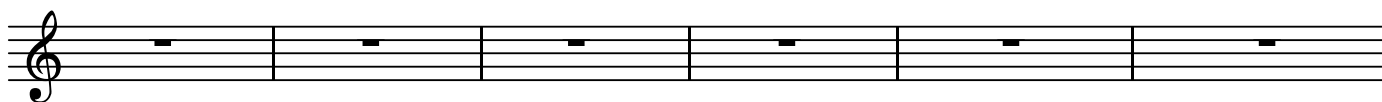
BK=2



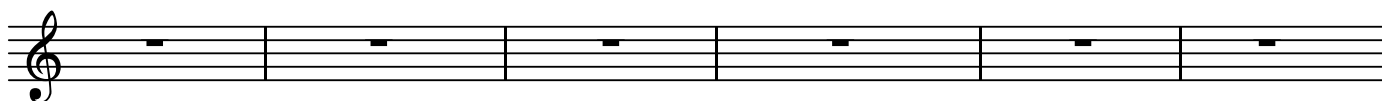
BK=3



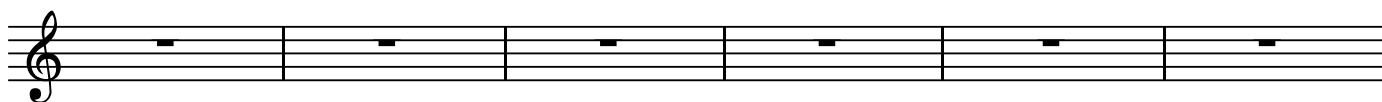
BK=4



BK=5



BK=6



BK=7



BK=8



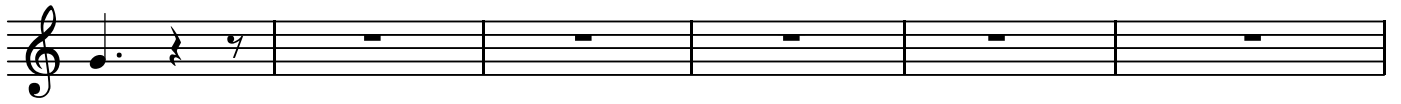
BK=9



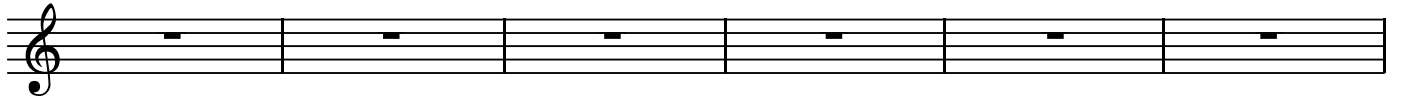
BK=10



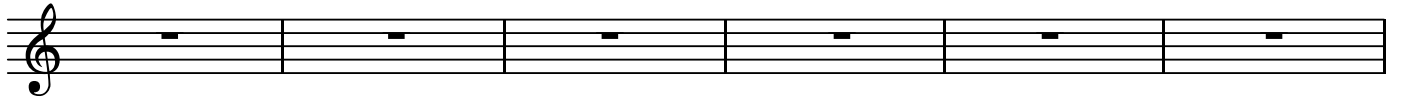
BK=11



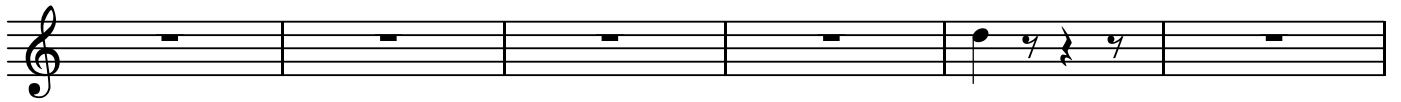
BK=12



BK=13



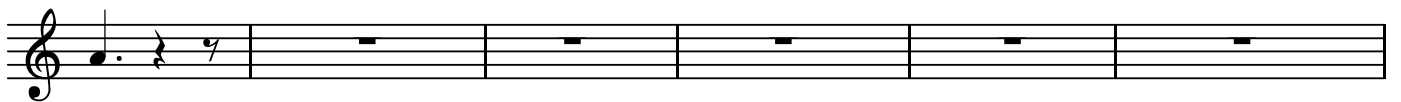
BK=14



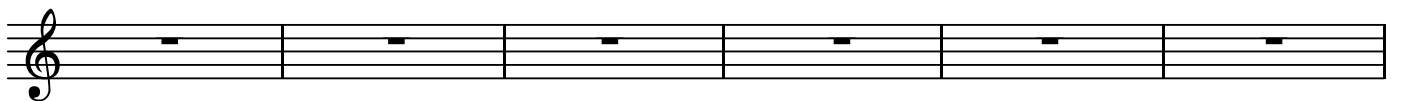
BK=15



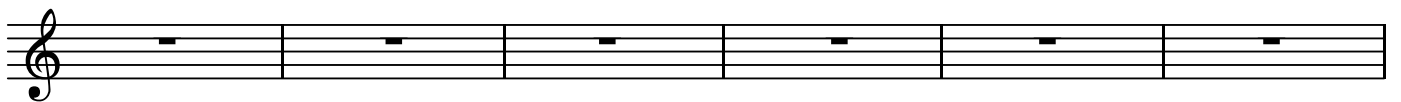
BK=16



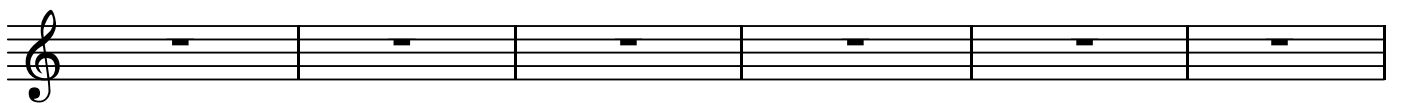
BK=17



BK=18



BK=19



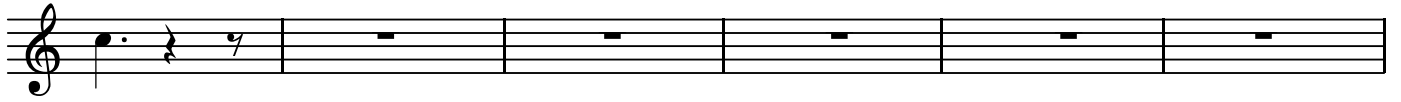
BK=20



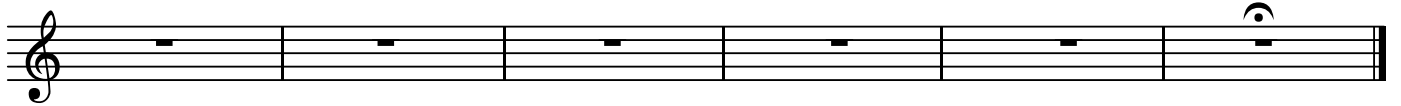
BK=21



BK=22



BK=23



T

第39番 答えたまえ、わが救い主よ

BK=1

Musical staff BK=1, Treble clef, 6/8 time signature. The staff contains a melodic line with dynamics *p* and *f*. The first measure has a *T* marking below it.

BK=2

Musical staff BK=2, Treble clef, 6/8 time signature. The staff contains a melodic line with trills (*tr*) and dynamics *p* and *f*.

BK=3

Musical staff BK=3, Treble clef, 6/8 time signature. The staff contains a melodic line with dynamics *p* and *f*.

BK=4

Musical staff BK=4, Treble clef, 6/8 time signature. The staff contains a melodic line with dynamics *p*.

BK=5

Musical staff BK=5, Treble clef, 6/8 time signature. The staff contains a melodic line with dynamics *f* and *p*.

BK=6

Musical staff BK=6, Treble clef, 6/8 time signature. The staff contains a melodic line with dynamics *f* and *p*, and a trill (*tr*).

BK=7

Musical staff BK=7, Treble clef, 6/8 time signature. The staff contains a melodic line with trills (*tr*) and dynamics *p*.

BK=8

Musical staff BK=8, Treble clef, 6/8 time signature. The staff contains a melodic line with dynamics *p*.

BK=9

Musical staff BK=9, Treble clef, 6/8 time signature. The staff contains a melodic line with dynamics *p* and *f*, and a trill (*tr*).

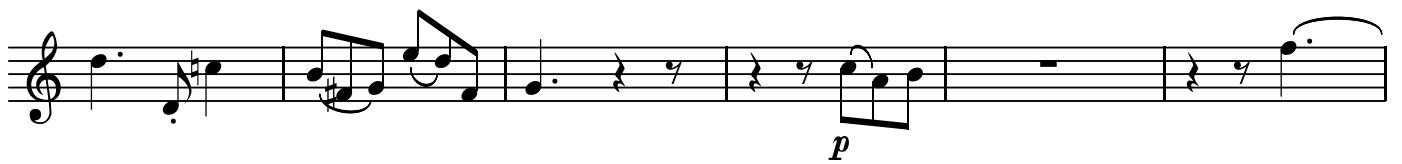
BK=10

Musical staff BK=10, Treble clef, 6/8 time signature. The staff contains a melodic line with dynamics *p*.

BK=11



BK=12



BK=13



BK=14



BK=15



BK=16



BK=17



BK=18



BK=19



BK=20







B

第39番 答えたまえ、わが救い主よ

BK=1



Musical notation for BK=1, starting with a bass clef, a 6/8 time signature, and a key signature of one flat. The first measure is marked with a forte *B* dynamic and a piano *p* dynamic. The notation consists of a single staff with eighth and quarter notes.

BK=2



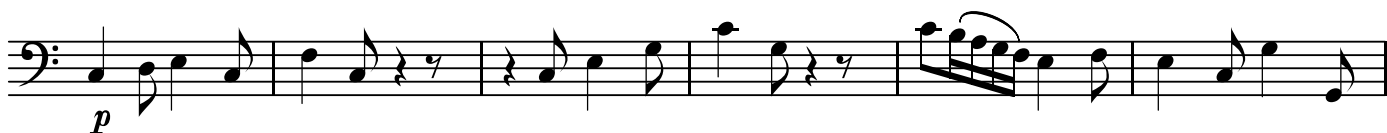
Musical notation for BK=2, continuing the piece. It features a piano *p* dynamic in the first measure and a forte *f* dynamic in the third measure. The notation includes a key signature change to two flats in the fifth measure.

BK=3



Musical notation for BK=3, featuring a key signature change to two flats and a final melodic flourish in the last measure.

BK=4



Musical notation for BK=4, starting with a piano *p* dynamic and featuring a complex sixteenth-note passage in the fifth measure.

BK=5



Musical notation for BK=5, continuing the melodic line with eighth and quarter notes.

BK=6



Musical notation for BK=6, featuring a key signature change to one flat and a melodic phrase with a slur.

BK=7



Musical notation for BK=7, featuring a key signature change to two flats and a melodic phrase with a slur.

BK=8



Musical notation for BK=8, featuring a key signature change to one flat and a melodic phrase with a slur.

BK=9



Musical notation for BK=9, featuring a key signature change to two flats and a melodic phrase with a slur.

BK=10



Musical notation for BK=10, featuring a key signature change to one flat and a melodic phrase with a slur.

BK=11



BK=12



BK=13



BK=14



BK=15



BK=16



BK=17



BK=18



BK=19



BK=20



BK=21



BK=22



BK=23

