

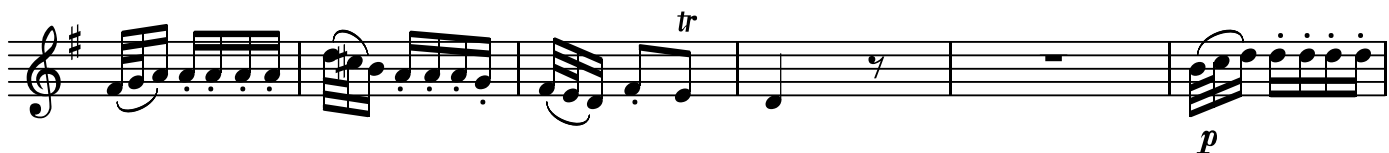
BK=1



BK=2



BK=3



BK=4



BK=5



BK=6



BK=7



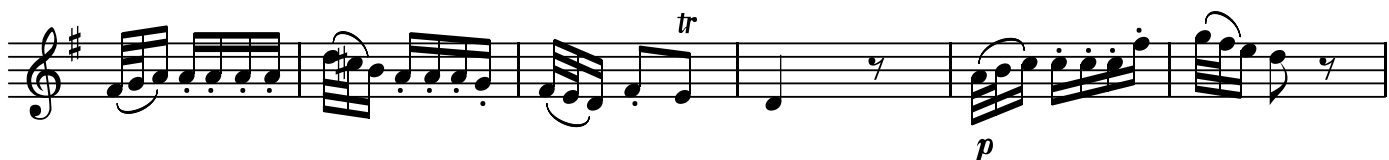
BK=8



BK=9

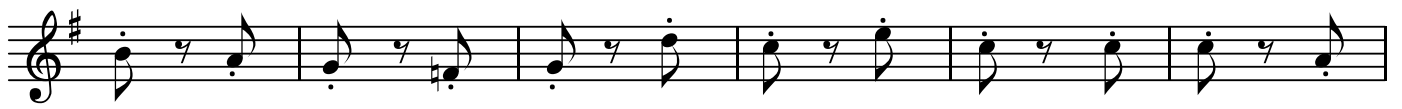


BK=10





BK=21



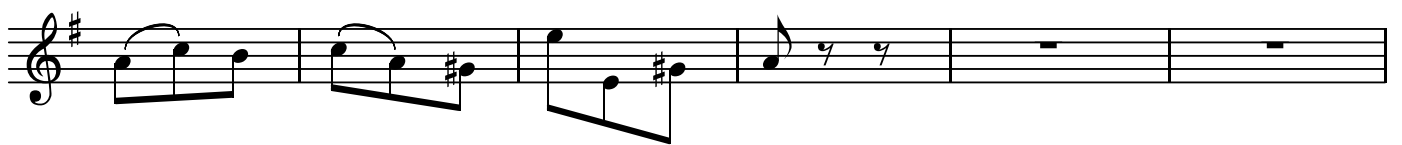
BK=22



BK=23



BK=24



BK=25



BK=26



BK=27



BK=28



A

第29番 主よ、汝の思いやり、汝の憐れみは

BK=1

Musical staff BK=1, starting with a treble clef, a key signature of one sharp (F#), and a 3/4 time signature. The staff contains a series of notes and rests, including a trill-like figure in the final measure.

BK=2

Musical staff BK=2, continuing the melody with various note values and rests.

BK=3

Musical staff BK=3, featuring a trill (tr) in the final measure.

BK=4

Musical staff BK=4, starting with a piano (p) dynamic marking.

BK=5

Musical staff BK=5, continuing the melodic line.

BK=6

Musical staff BK=6, featuring a series of eighth notes and rests.

BK=7

Musical staff BK=7, ending with a forte (f) dynamic marking.

BK=8

Musical staff BK=8, continuing the melodic line.

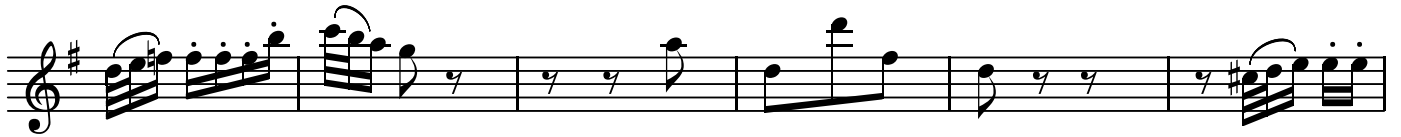
BK=9

Musical staff BK=9, featuring a series of eighth notes and rests.

BK=10

Musical staff BK=10, ending with a trill (tr) in the final measure.

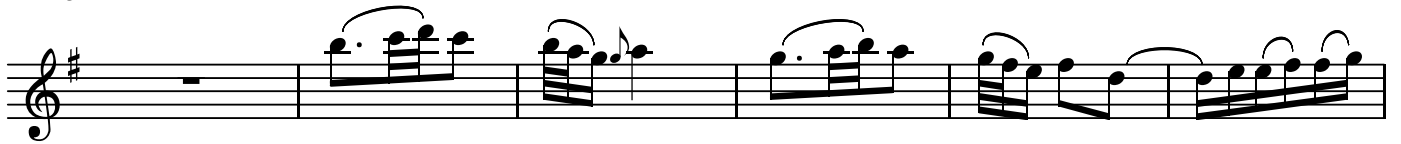
BK=11



BK=12



BK=13



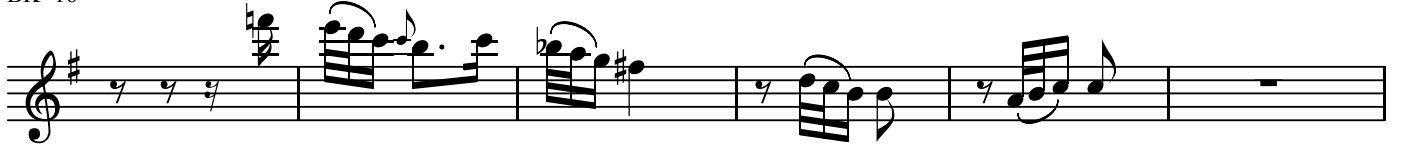
BK=14



BK=15



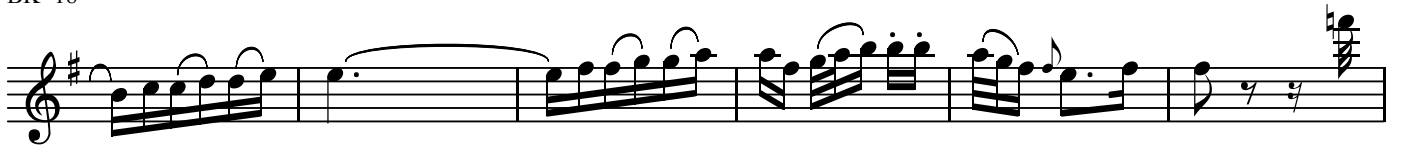
BK=16



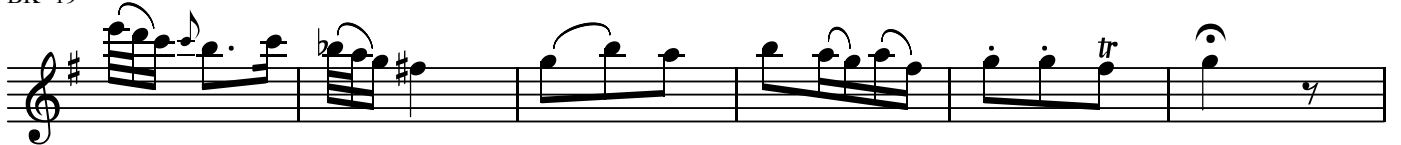
BK=17



BK=18

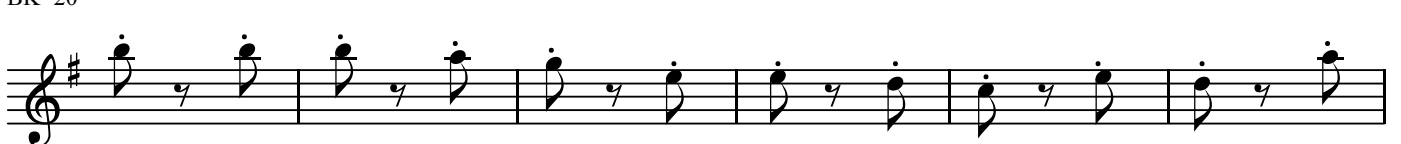


BK=19



Fine

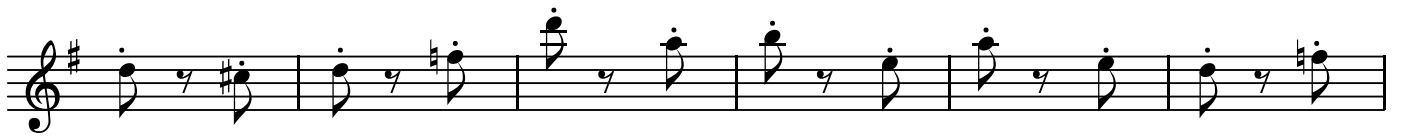
BK=20



BK=21



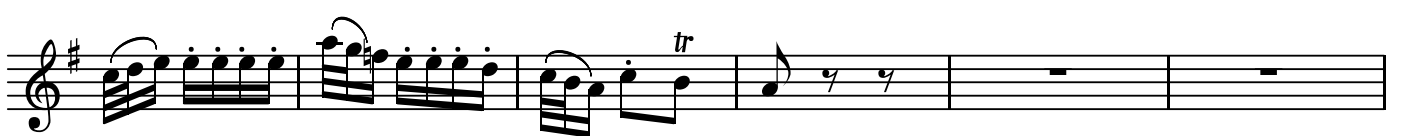
BK=22



BK=23



BK=24



BK=25



BK=26



BK=27



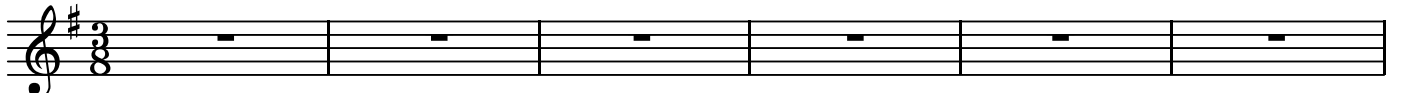
BK=28



D.C.

第29番 主よ、汝の思いやり、汝の憐れみは

BK=1

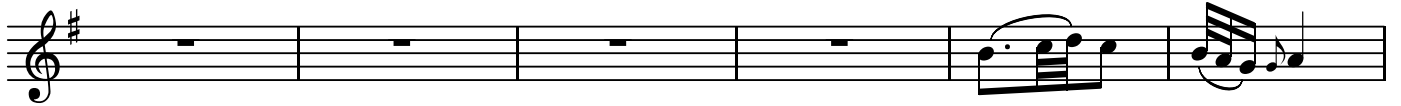


S2

BK=2



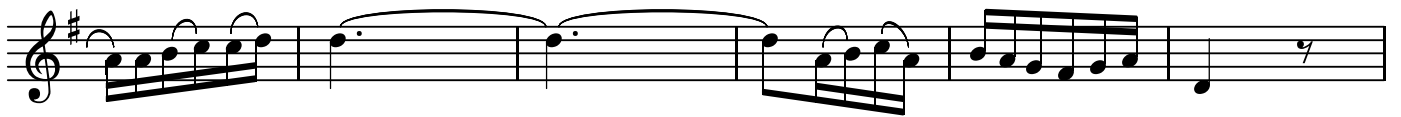
BK=3



BK=4



BK=5



BK=6



BK=7



BK=8



BK=9



BK=10



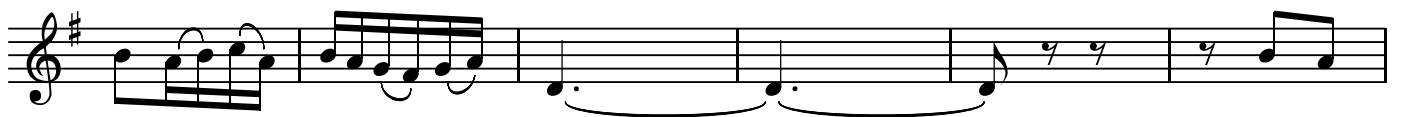
BK=11



BK=12



BK=13



BK=14



BK=15



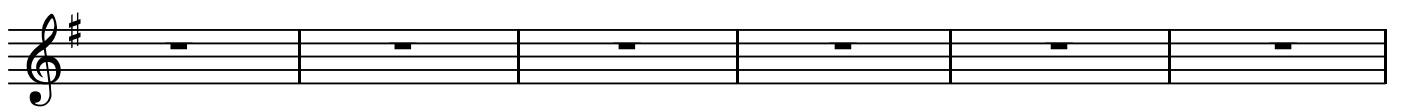
BK=16



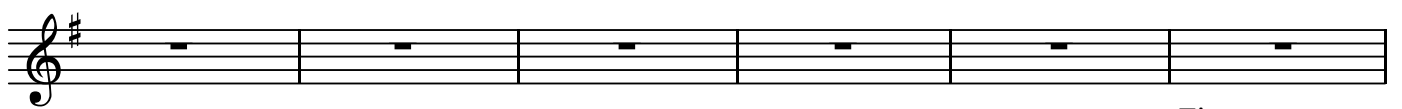
BK=17



BK=18



BK=19



Fine

BK=20





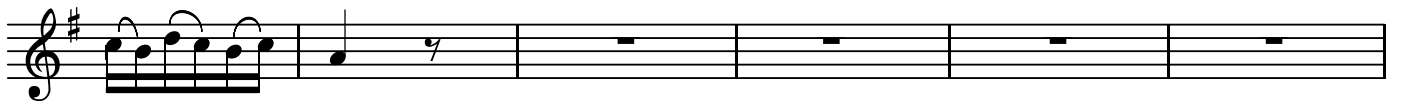
BK=21



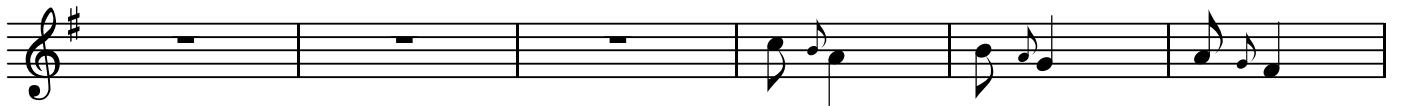
BK=22



BK=23



BK=24



BK=25



BK=26



BK=27



BK=28

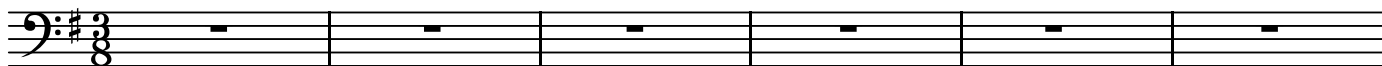


D.C.

B

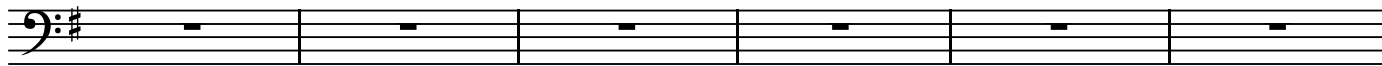
第29番 主よ、汝の思いやり、汝の憐れみは

BK=1

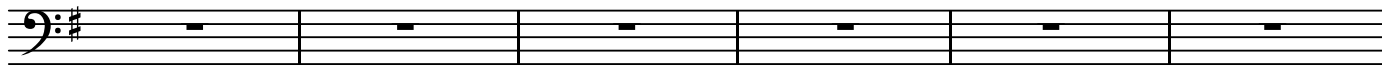


B

BK=2



BK=3



BK=4



BK=5



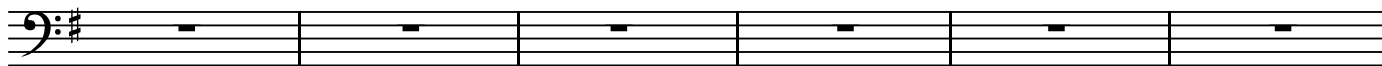
BK=6



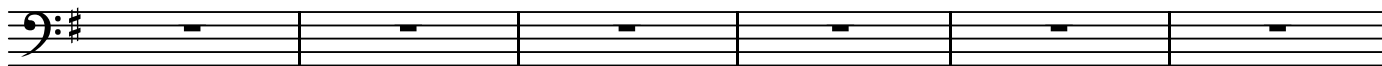
BK=7



BK=8



BK=9



BK=10





BK=21



BK=22



BK=23



BK=24



BK=25



BK=26



BK=27



BK=28



D.C.

GB

第29番 主よ、汝の思いやり、汝の憐れみは

BK=1

Musical staff for BK=1, featuring a bass clef, a key signature of one sharp (F#), and a 3/8 time signature. The staff contains a sequence of notes and rests, with a dynamic marking of *GB* at the beginning.

BK=2

Musical staff for BK=2, continuing the bass line with various rhythmic patterns and slurs.

BK=3

Musical staff for BK=3, including a dynamic marking of *p* (piano) towards the end of the staff.

BK=4

Musical staff for BK=4, featuring a fermata over a note in the second measure.

BK=5

Musical staff for BK=5, showing a series of eighth notes and slurs.

BK=6

Musical staff for BK=6, continuing the melodic and rhythmic development.

BK=7

Musical staff for BK=7, featuring a series of eighth notes with slurs.

BK=8

Musical staff for BK=8, including a dynamic marking of *f* (forte) at the beginning.

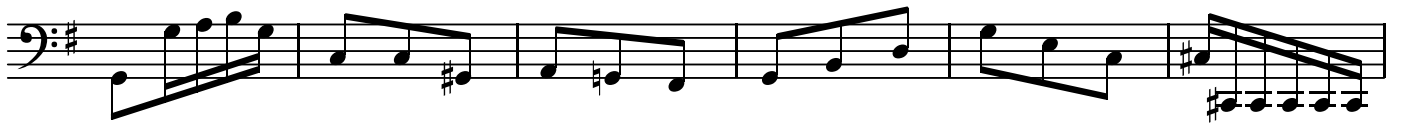
BK=9

Musical staff for BK=9, showing a continuation of the bass line with slurs.

BK=10

Musical staff for BK=10, concluding the piece with a final series of notes and slurs.

BK=11



BK=12



BK=13



BK=14



BK=15



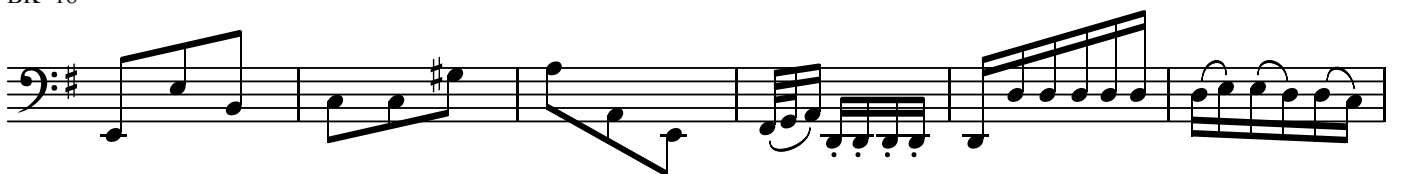
BK=16



BK=17



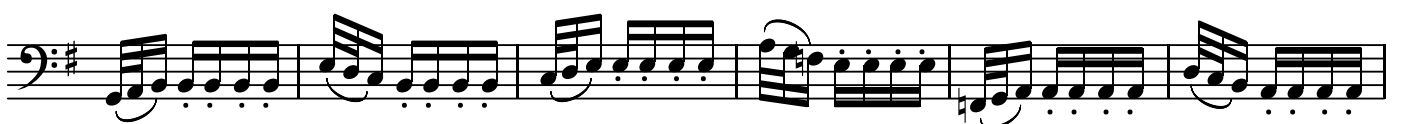
BK=18



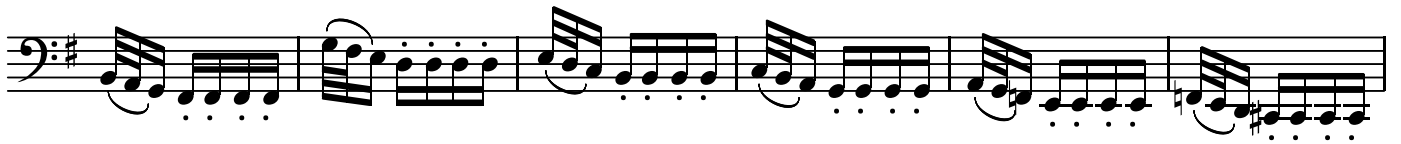
BK=19



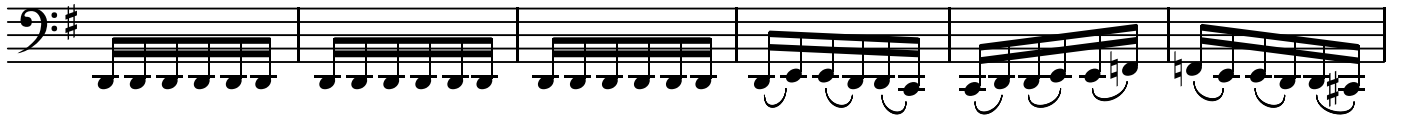
BK=20



BK=21



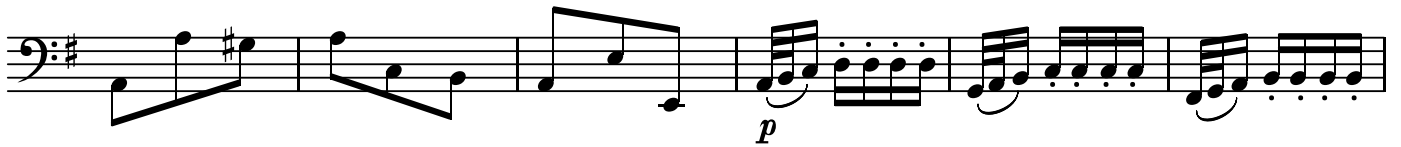
BK=22



BK=23



BK=24



BK=25



BK=26



BK=27



BK=28

