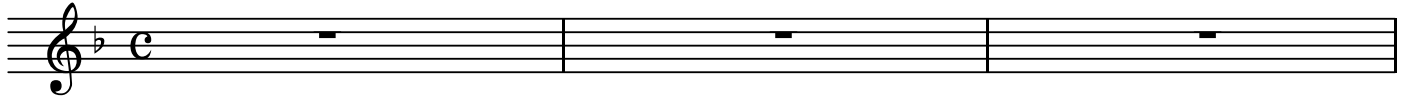


BK=1



BK=2



BK=3



BK=4



BK=5



BK=6



BK=7



BK=8



BK=9



BK=10



BK=11



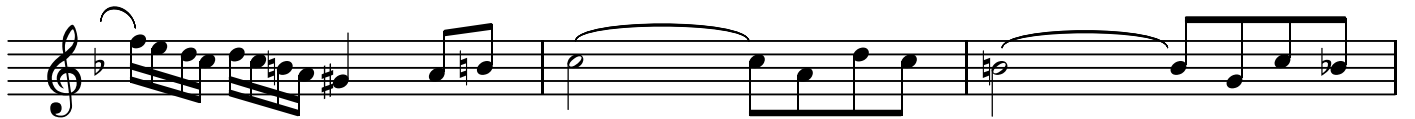
BK=12



BK=13



BK=14



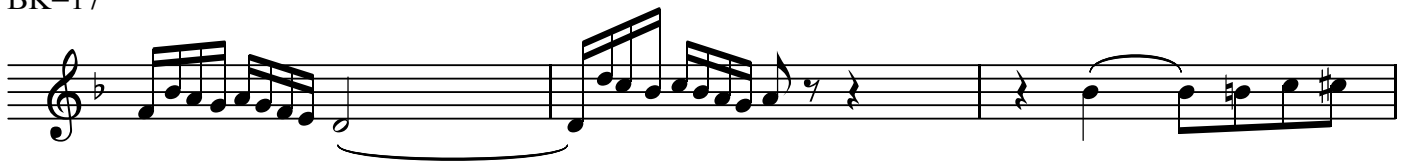
BK=15



BK=16



BK=17



BK=18



BK=19



BK=20



BK=21

Single staff musical notation in treble clef, one flat key signature. The melody consists of the following notes: G4, A4-B4, C5 (slurred), D5, E5, F5 (half rest), G5 (half rest), A5-B5, C6 (slurred), D6, E6, F6, G6, A6. The first two measures are connected by a slur.

BK=22

Single staff musical notation in treble clef, one flat key signature. The melody consists of the following notes: G4, A4-B4, C5 (slurred), D5, E5, F5 (half note), G5 (quarter note), A5-B5 (trill), C6 (half note with fermata), D6. The first two measures are connected by a slur.

A

Contrapunktus 9

BK=1



BK=2



BK=3



BK=4



BK=5



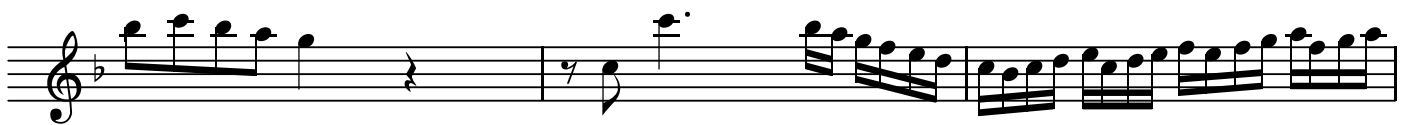
BK=6



BK=7



BK=8



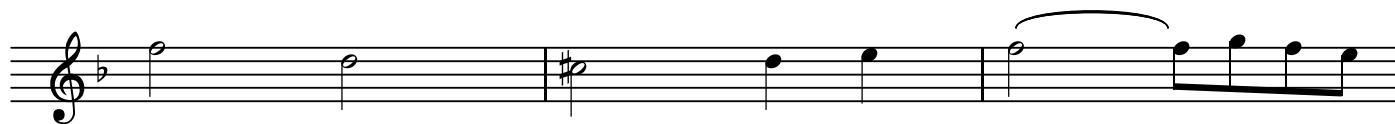
BK=9



BK=10



BK=11



Musical notation for BK=11, featuring a treble clef, a key signature of one flat (B-flat), and a 3/4 time signature. The melody consists of a half note G4, a half note F4, a quarter note E4, a quarter note D4, a quarter note C4, and a quarter note B3.

BK=12



Musical notation for BK=12, featuring a treble clef, a key signature of one flat (B-flat), and a 3/4 time signature. The melody consists of a half note G4, a half note F4, a quarter note E4, a quarter note D4, a quarter note C4, and a quarter note B3.

BK=13



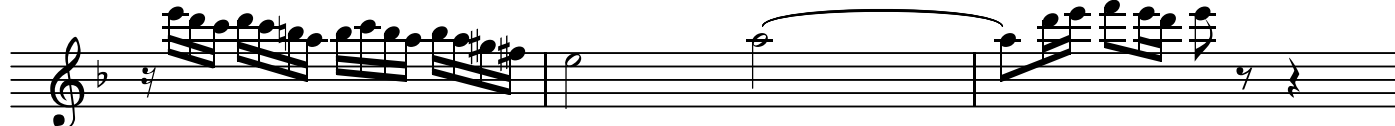
Musical notation for BK=13, featuring a treble clef, a key signature of one flat (B-flat), and a 3/4 time signature. The melody consists of a half note G4, a half note F4, a quarter note E4, a quarter note D4, a quarter note C4, and a quarter note B3.

BK=14



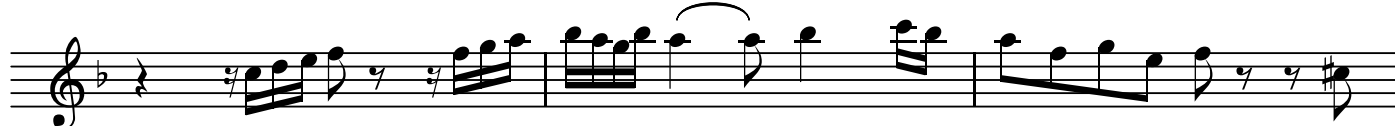
Musical notation for BK=14, featuring a treble clef, a key signature of one flat (B-flat), and a 3/4 time signature. The melody consists of a half note G4, a half note F4, a quarter note E4, a quarter note D4, a quarter note C4, and a quarter note B3.

BK=15



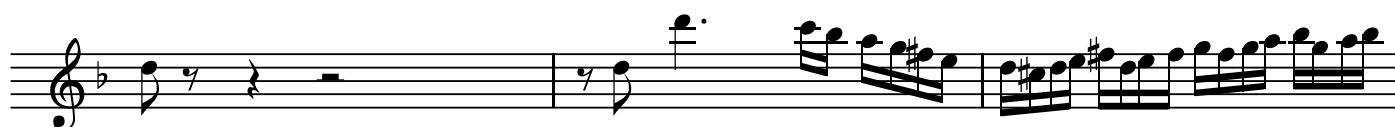
Musical notation for BK=15, featuring a treble clef, a key signature of one flat (B-flat), and a 3/4 time signature. The melody consists of a half note G4, a half note F4, a quarter note E4, a quarter note D4, a quarter note C4, and a quarter note B3.

BK=16



Musical notation for BK=16, featuring a treble clef, a key signature of one flat (B-flat), and a 3/4 time signature. The melody consists of a half note G4, a half note F4, a quarter note E4, a quarter note D4, a quarter note C4, and a quarter note B3.

BK=17



Musical notation for BK=17, featuring a treble clef, a key signature of one flat (B-flat), and a 3/4 time signature. The melody consists of a half note G4, a half note F4, a quarter note E4, a quarter note D4, a quarter note C4, and a quarter note B3.

BK=18



Musical notation for BK=18, featuring a treble clef, a key signature of one flat (B-flat), and a 3/4 time signature. The melody consists of a half note G4, a half note F4, a quarter note E4, a quarter note D4, a quarter note C4, and a quarter note B3.

BK=19



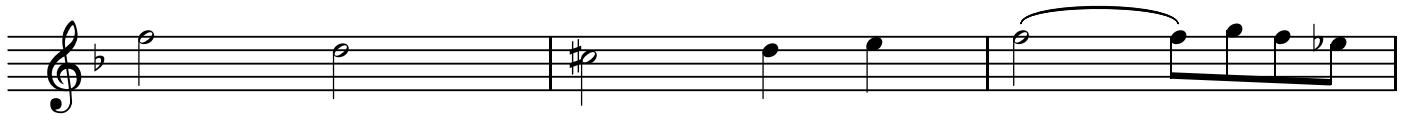
Musical notation for BK=19, featuring a treble clef, a key signature of one flat (B-flat), and a 3/4 time signature. The melody consists of a half note G4, a half note F4, a quarter note E4, a quarter note D4, a quarter note C4, and a quarter note B3.

BK=20



Musical notation for BK=20, featuring a treble clef, a key signature of one flat (B-flat), and a 3/4 time signature. The melody consists of a half note G4, a half note F4, a quarter note E4, a quarter note D4, a quarter note C4, and a quarter note B3.

BK=21



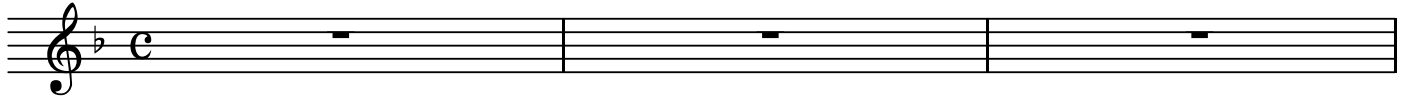
BK=22



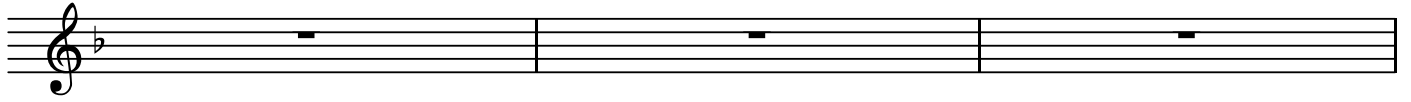
T

Contrapunktus 9

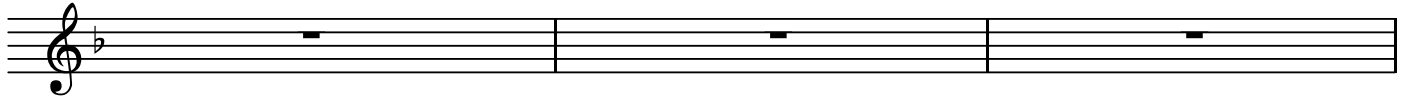
BK=1



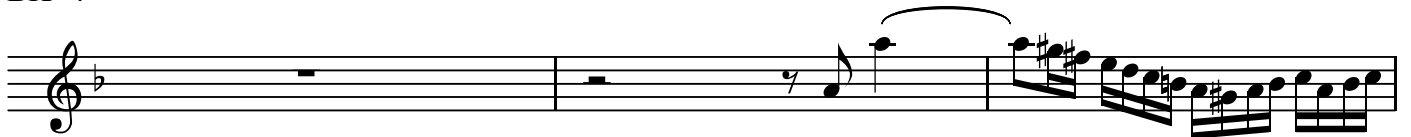
BK=2



BK=3



BK=4



BK=5



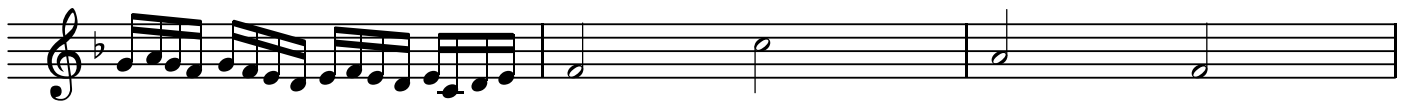
BK=6



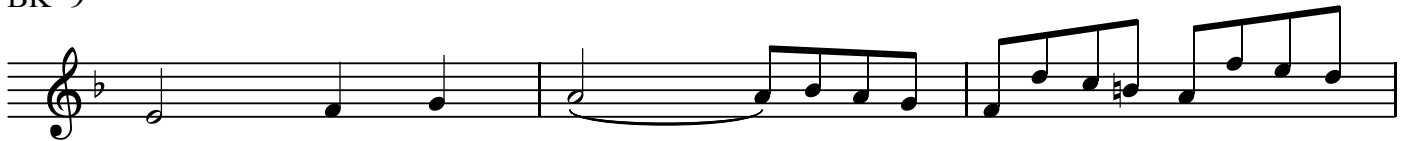
BK=7



BK=8



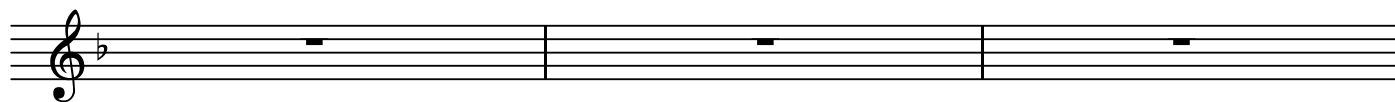
BK=9



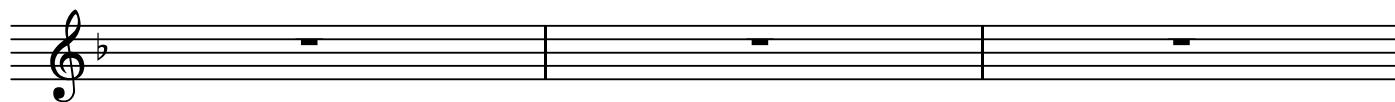
BK=10



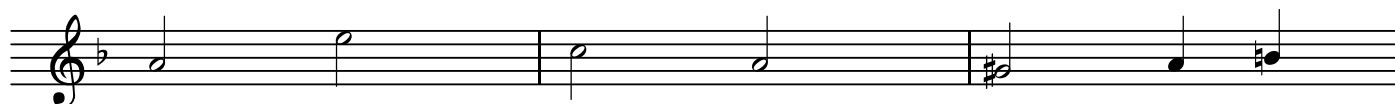
BK=11



BK=12



BK=13



BK=14



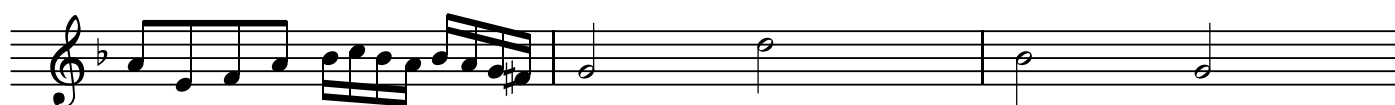
BK=15



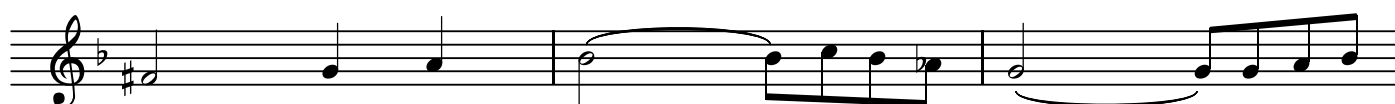
BK=16



BK=17



BK=18



BK=19



BK=20





BK=21



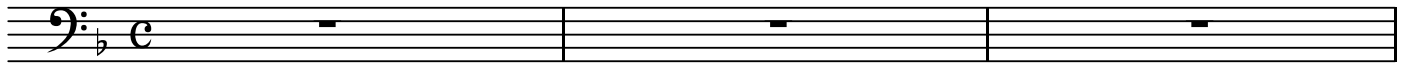
BK=22



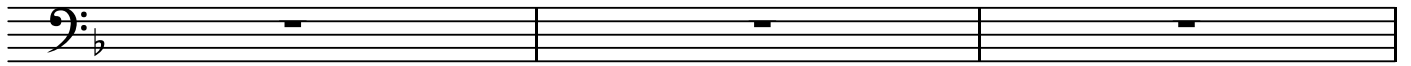
B

Contrapunktus 9

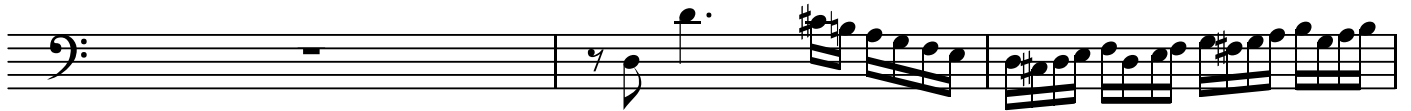
BK=1



BK=2



BK=3



BK=4



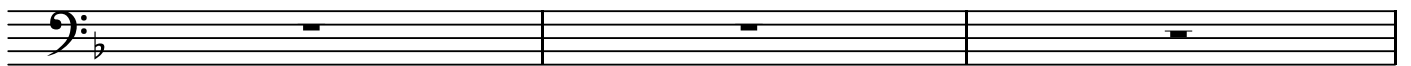
BK=5



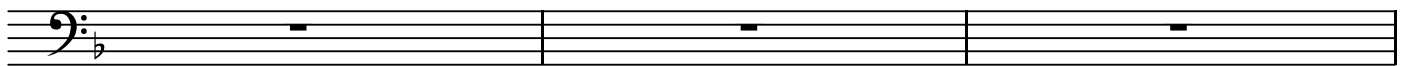
BK=6



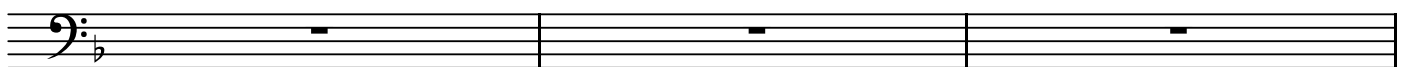
BK=7



BK=8



BK=9



BK=10



BK=11



BK=12



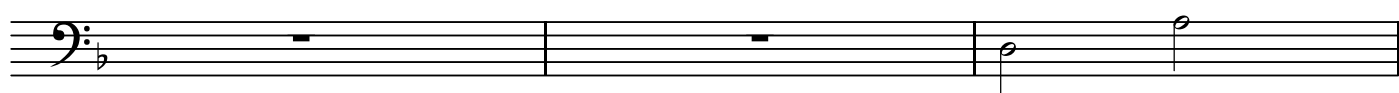
BK=13



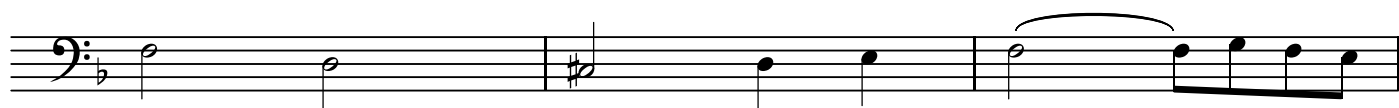
BK=14



BK=15



BK=16



BK=17



BK=18



BK=19



BK=20



BK=21



BK=22

