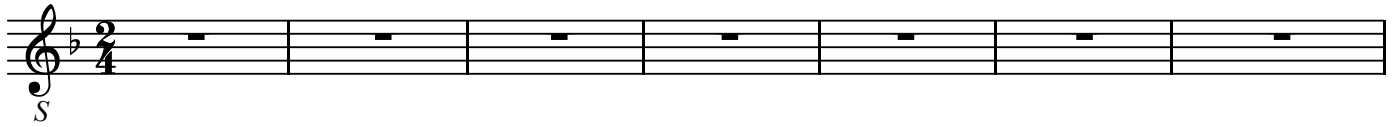
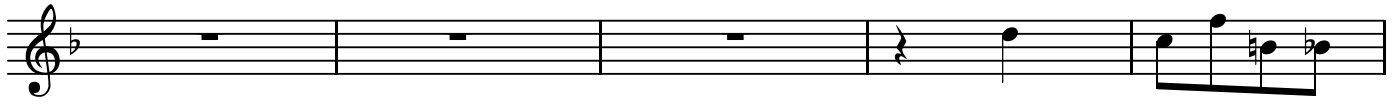


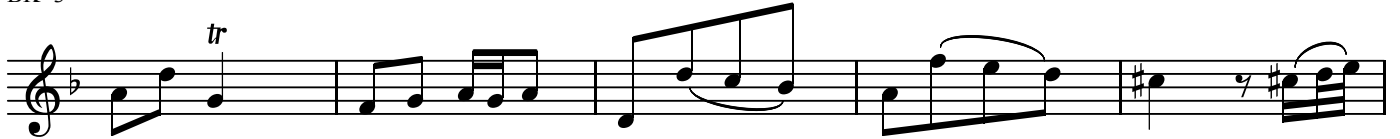
BK=1



BK=2



BK=3



BK=4



BK=5



BK=6



BK=7



BK=8



BK=9



BK=10



BK=11



BK=12



BK=13



BK=14



BK=15



BK=16



BK=17



BK=18



BK=19



BK=20



BK=21



BK=22



BK=23



BK=24



BK=25



BK=26



BK=27



BK=28



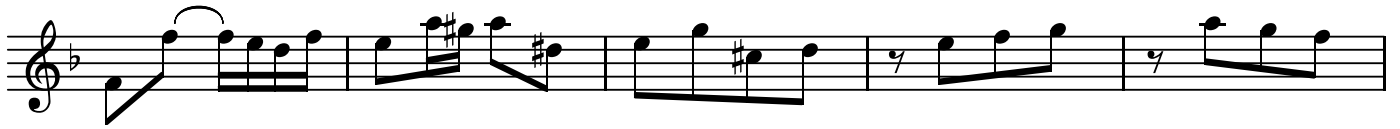
BK=29



BK=30



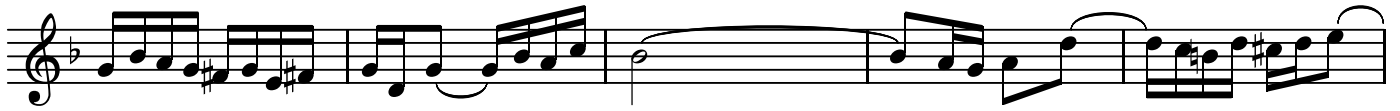
BK=31



BK=32



BK=33



BK=34



BK=35



BK=36



BK=37



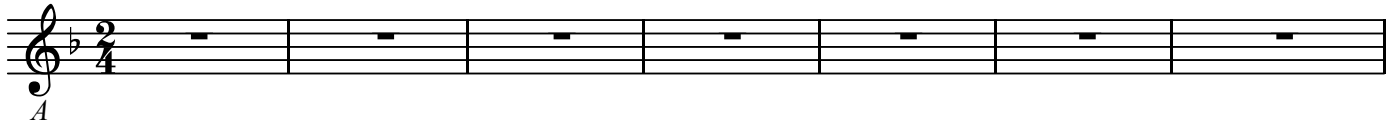
BK=38



A

Contrapunktus 8

BK=1



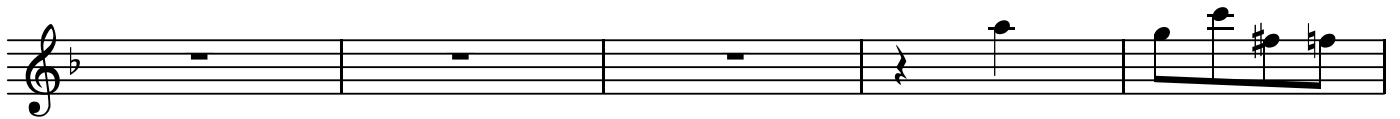
BK=2



BK=3



BK=4



BK=5



BK=6



BK=7



BK=8



BK=9



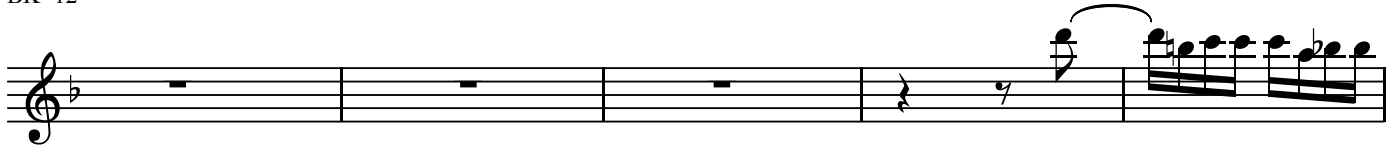
BK=10



BK=11



BK=12



BK=13



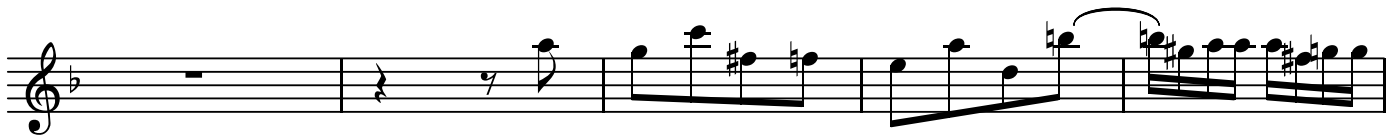
BK=14



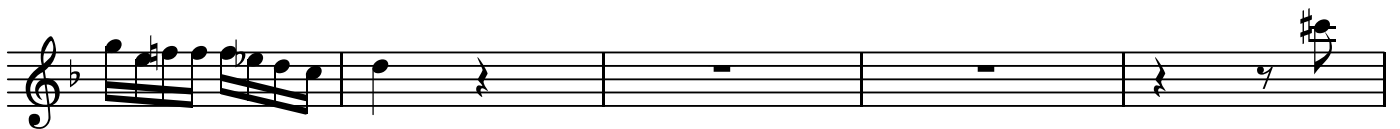
BK=15



BK=16



BK=17



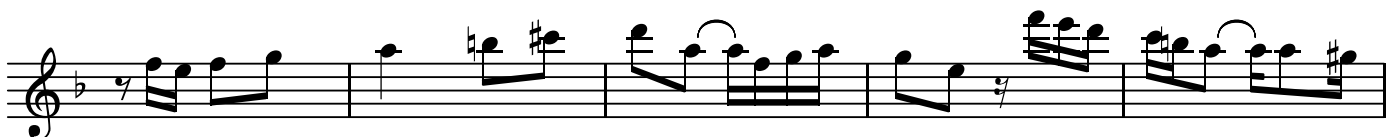
BK=18



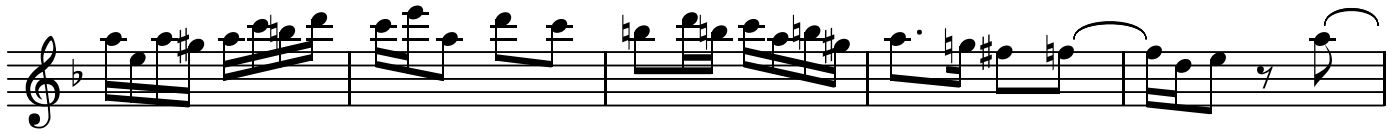
BK=19



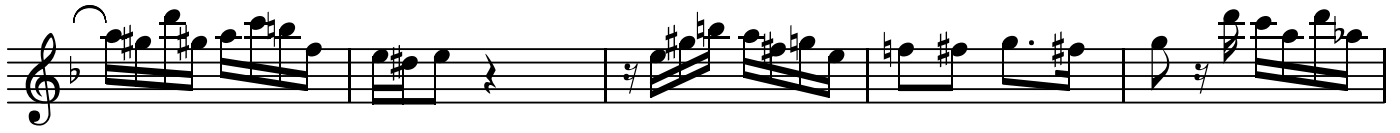
BK=20



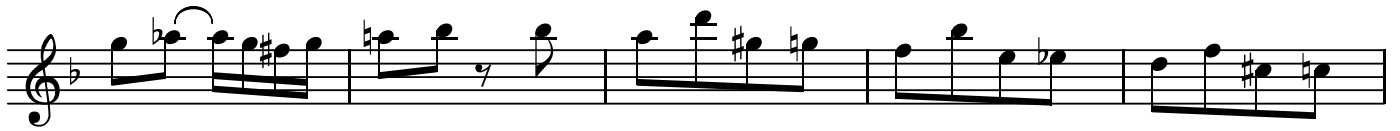
BK=21



BK=22



BK=23



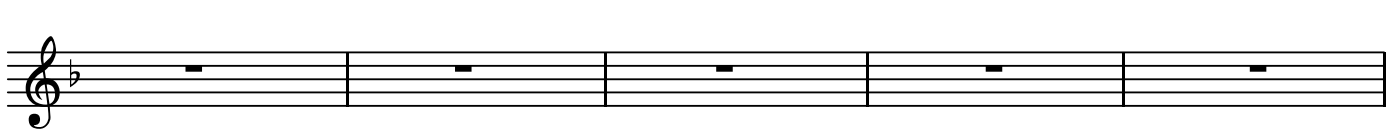
BK=24



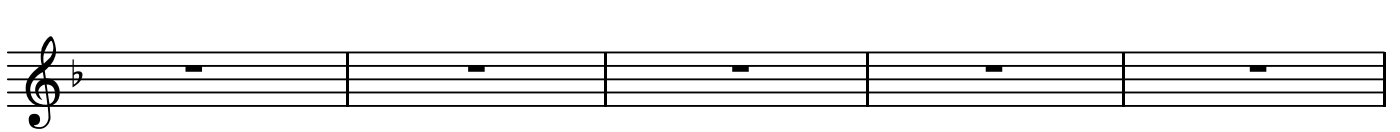
BK=25



BK=26



BK=27



BK=28



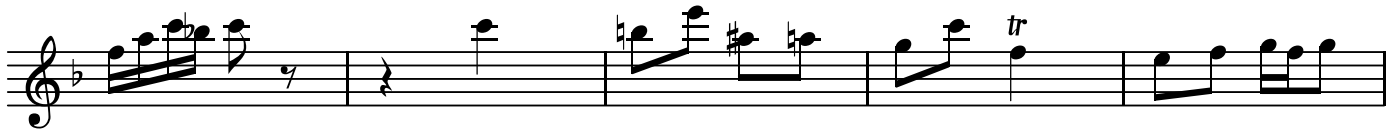
BK=29



BK=30



BK=31



BK=32



BK=33



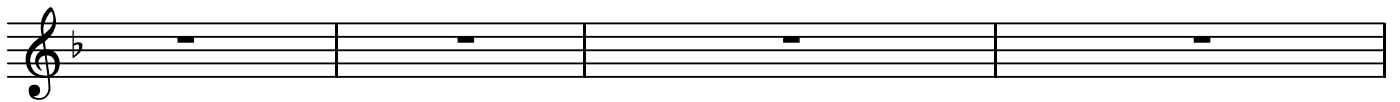
BK=34



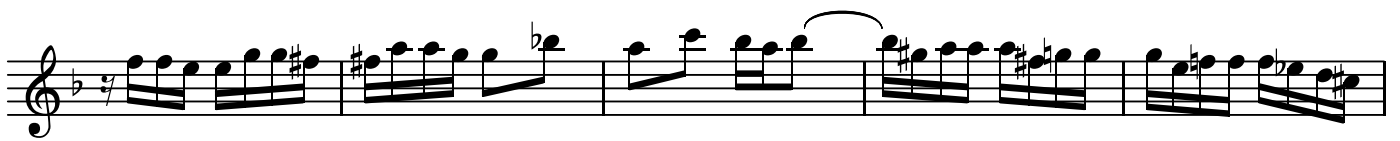
BK=35



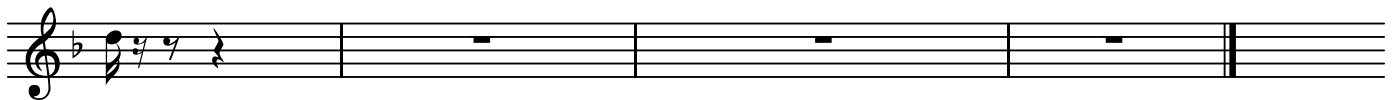
BK=36



BK=37



BK=38





T

Contrapunktus 8

BK=1

Musical staff for BK=1, featuring a treble clef, a key signature of one flat (B-flat), and a 2/4 time signature. The staff contains a melodic line starting with a quarter rest, followed by eighth and sixteenth notes, including a trill (tr) and a fermata. A 'T' is written below the first measure.

BK=2

Musical staff for BK=2, featuring a treble clef, a key signature of one flat, and a 2/4 time signature. The staff contains a melodic line with eighth and sixteenth notes.

BK=3

Musical staff for BK=3, featuring a treble clef, a key signature of one flat, and a 2/4 time signature. The staff contains a melodic line with eighth and sixteenth notes, including a fermata.

BK=4

Musical staff for BK=4, featuring a treble clef, a key signature of one flat, and a 2/4 time signature. The staff contains a melodic line with eighth and sixteenth notes, including a fermata.

BK=5

Musical staff for BK=5, featuring a treble clef, a key signature of one flat, and a 2/4 time signature. The staff contains a whole rest in every measure.

BK=6

Musical staff for BK=6, featuring a treble clef, a key signature of one flat, and a 2/4 time signature. The staff contains a melodic line with eighth and sixteenth notes.

BK=7

Musical staff for BK=7, featuring a treble clef, a key signature of one flat, and a 2/4 time signature. The staff contains a melodic line with eighth and sixteenth notes.

BK=8

Musical staff for BK=8, featuring a treble clef, a key signature of one flat, and a 2/4 time signature. The staff contains a melodic line with eighth notes and a fermata.

BK=9

Musical staff for BK=9, featuring a treble clef, a key signature of one flat, and a 2/4 time signature. The staff contains a melodic line with eighth and sixteenth notes, including a fermata.

BK=10

Musical staff for BK=10, featuring a treble clef, a key signature of one flat, and a 2/4 time signature. The staff contains a melodic line with eighth and sixteenth notes.

BK=11



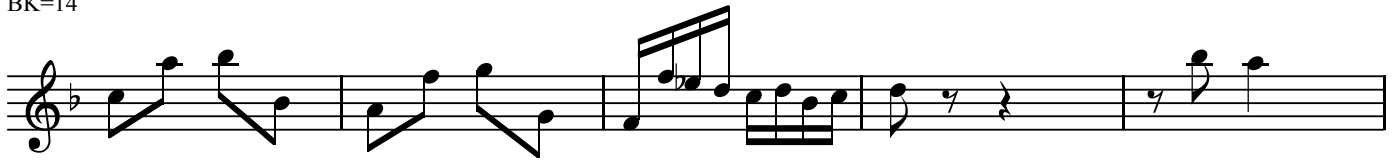
BK=12



BK=13



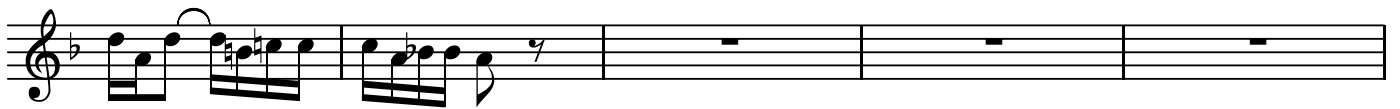
BK=14



BK=15



BK=16



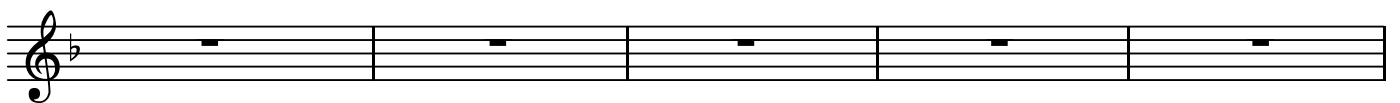
BK=17



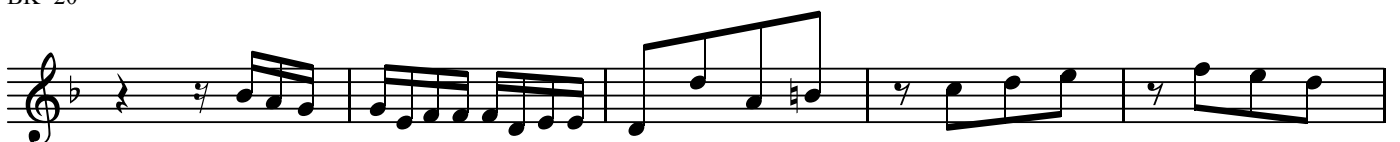
BK=18



BK=19



BK=20



BK=21



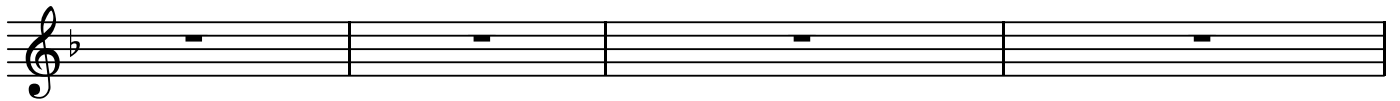
BK=22



BK=23



BK=24



BK=25



BK=26



BK=27



BK=28



BK=29



BK=30



BK=31



BK=32



BK=33



BK=34



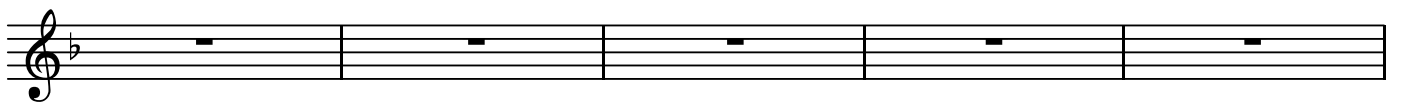
BK=35



BK=36



BK=37



BK=38





BK=11



BK=12



BK=13



BK=14



BK=15



BK=16



BK=17



BK=18



BK=19



BK=20



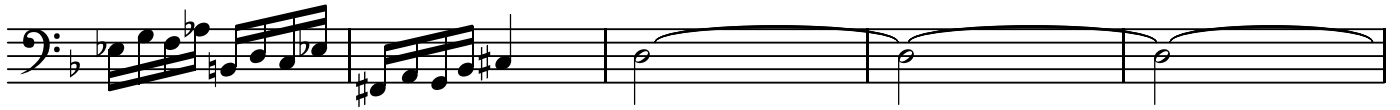
BK=21



BK=22



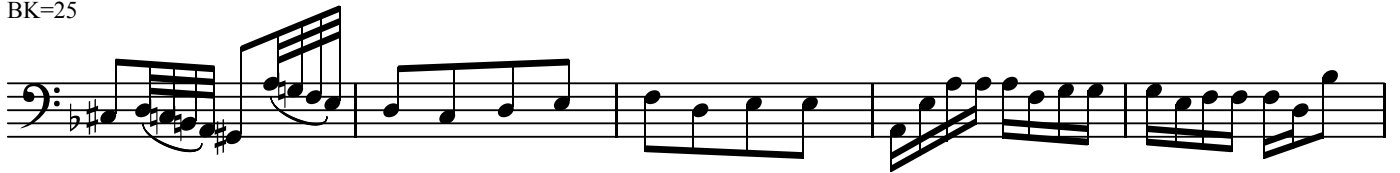
BK=23



BK=24



BK=25



BK=26



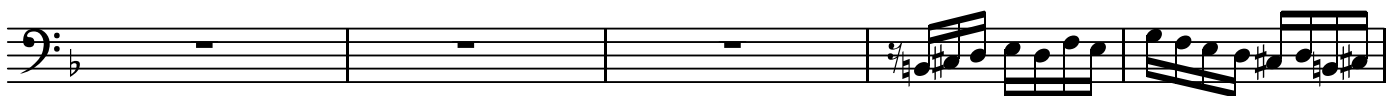
BK=27



BK=28



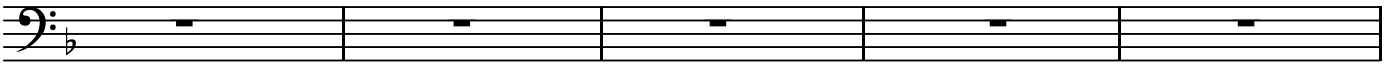
BK=29



BK=30



BK=31



BK=32



BK=33



BK=34



BK=35



BK=36



BK=37



BK=38

