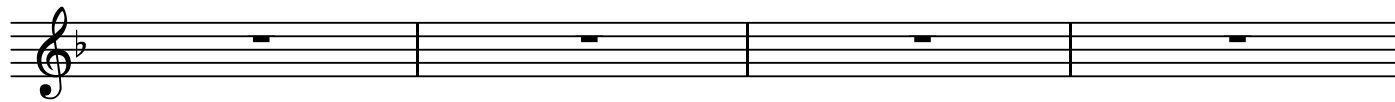


Contrapunktus 2

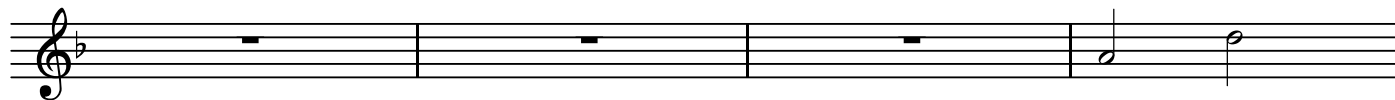
BK=1



BK=2



BK=3



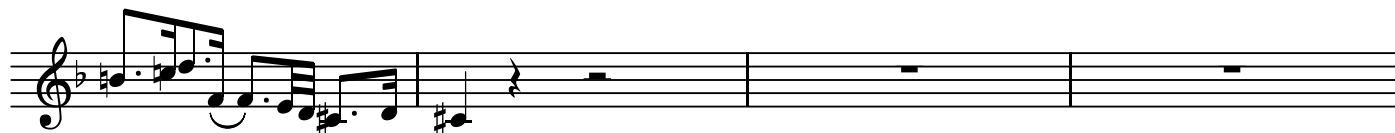
BK=4



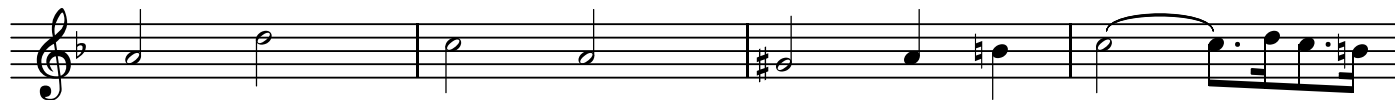
BK=5



BK=6



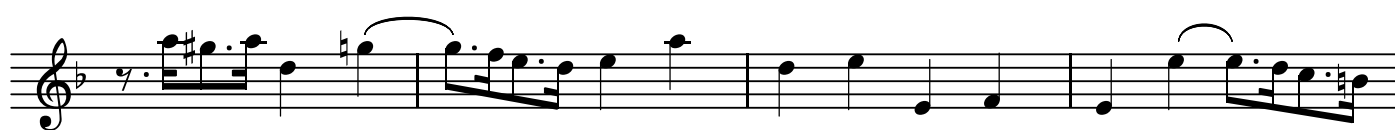
BK=7



BK=8



BK=9



BK=10



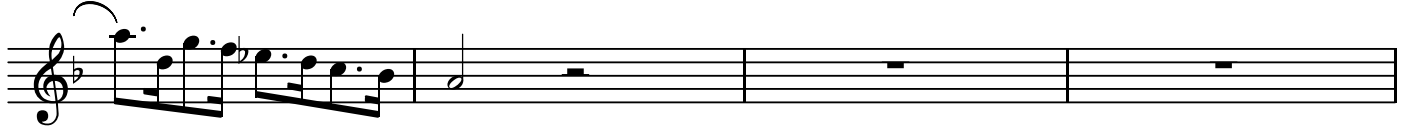
BK=11



BK=12



BK=13



BK=14



BK=15



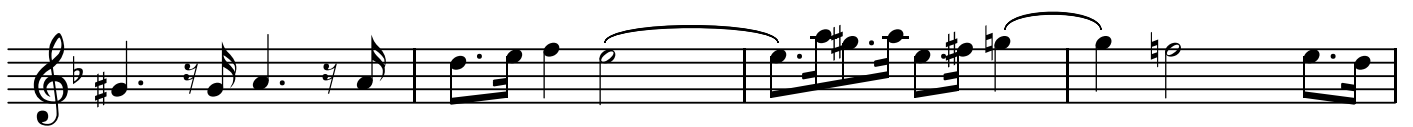
BK=16



BK=17



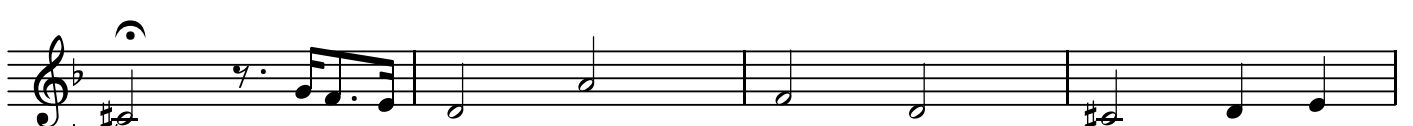
BK=18



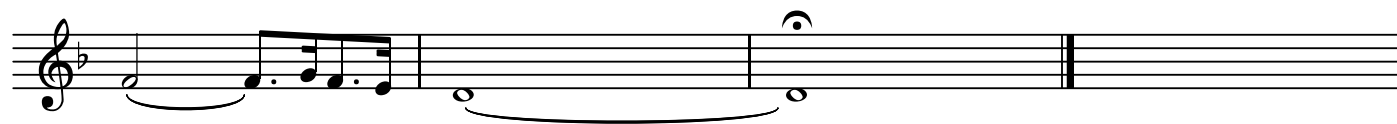
BK=19



BK=20



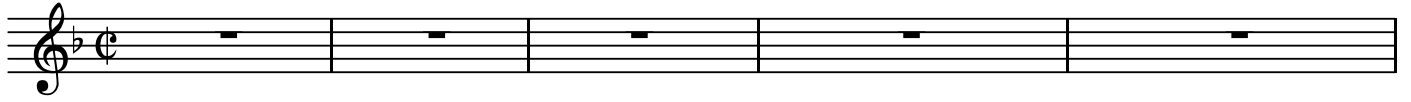
BK=21



A

Contrapunktus 2

BK=1



BK=2



BK=3



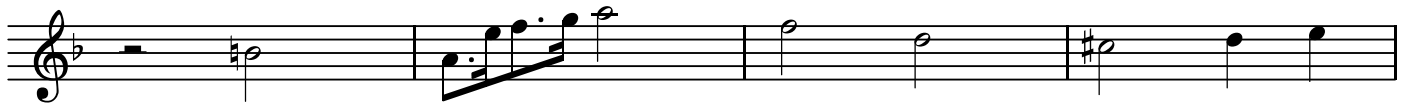
BK=4



BK=5



BK=6



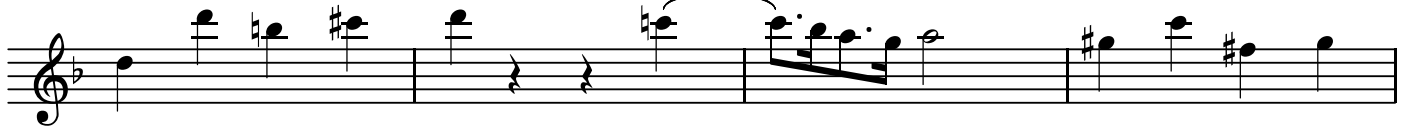
BK=7



BK=8



BK=9



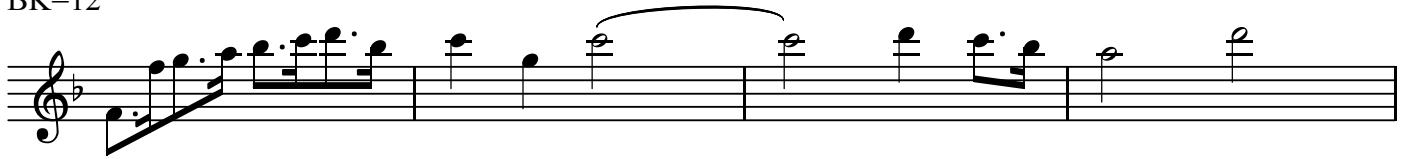
BK=10



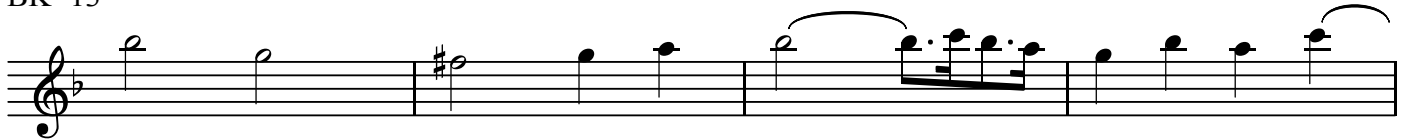
BK=11



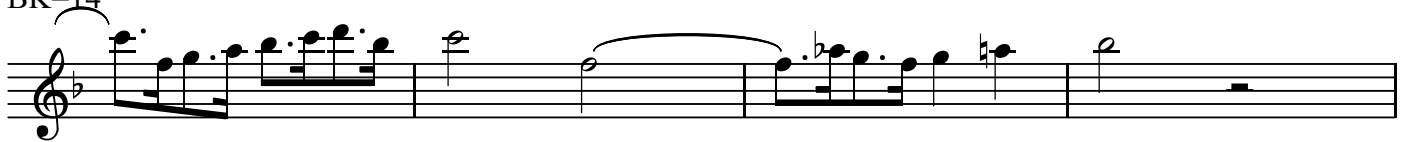
BK=12



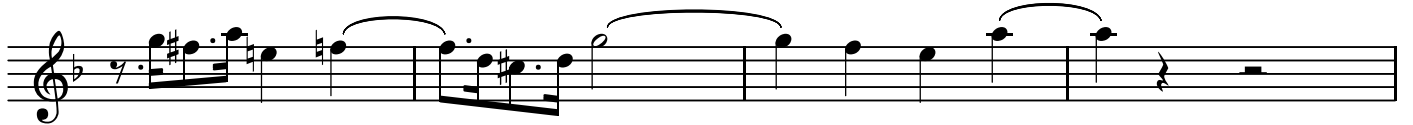
BK=13



BK=14



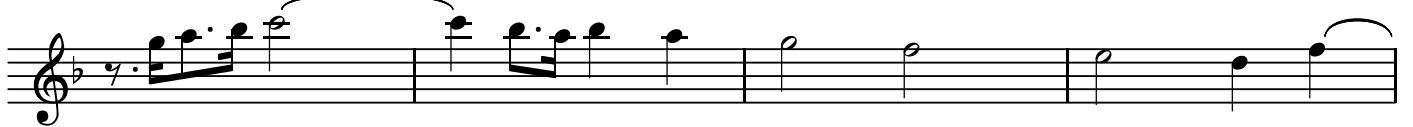
BK=15



BK=16



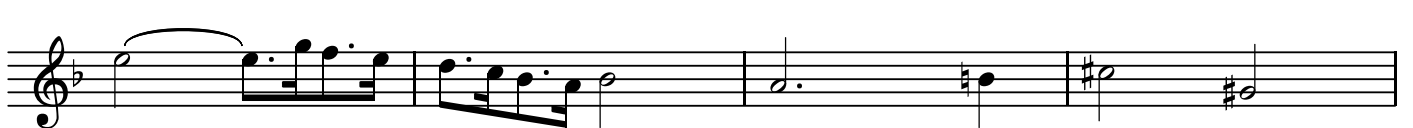
BK=17



BK=18



BK=19



BK=20

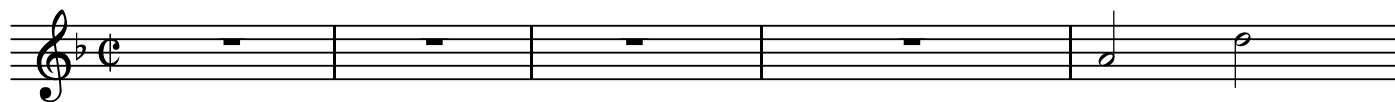




T

Contrapunktus 2

BK=1



BK=2



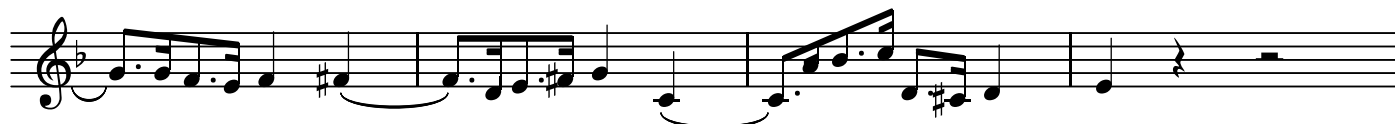
BK=3



BK=4



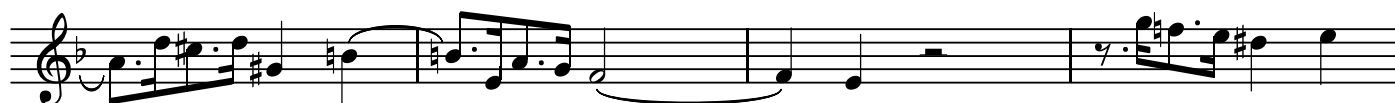
BK=5



BK=6



BK=7



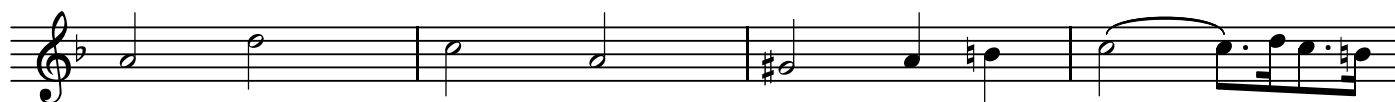
BK=8



BK=9



BK=10



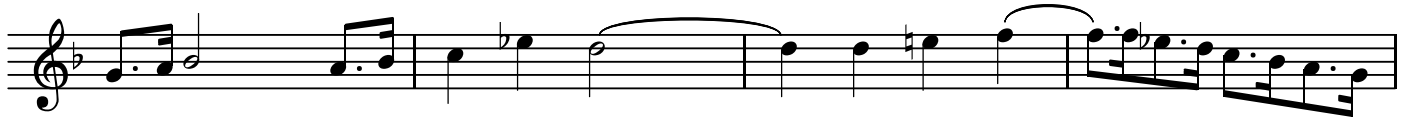
BK=11



BK=12



BK=13



BK=14



BK=15



BK=16



BK=17



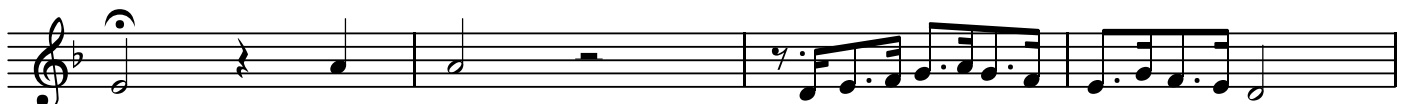
BK=18



BK=19



BK=20



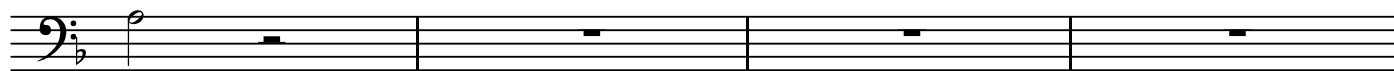


BK=21

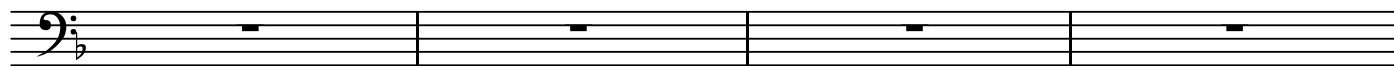
A single staff of music in G major (one sharp, F#). The notation begins with a treble clef. The first measure contains a quarter note G4 (F# on the staff), followed by quarter notes A4 and B4. The second measure contains quarter notes C5 and D5. The third measure contains eighth notes E5 and F#5, followed by a quarter note G5. The fourth measure contains eighth notes A5 and B5, followed by a quarter note C6. The fifth measure contains eighth notes D6 and E6, followed by a quarter note F#6. The sixth measure contains eighth notes G6 and A6, followed by a quarter note B6. The seventh measure contains a quarter note C7 with a fermata above it. The staff ends with a double bar line.



BK=11



BK=12



BK=13



BK=14



BK=15



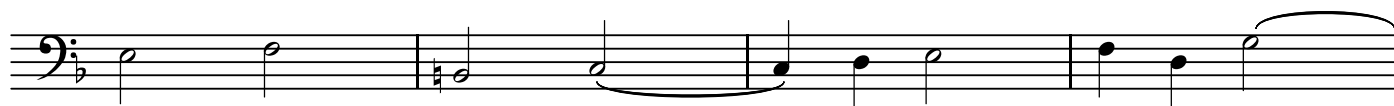
BK=16



BK=17



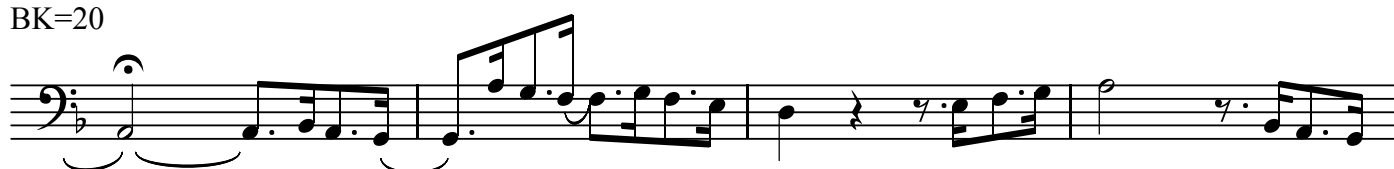
BK=18



BK=19



BK=20



BK=21

