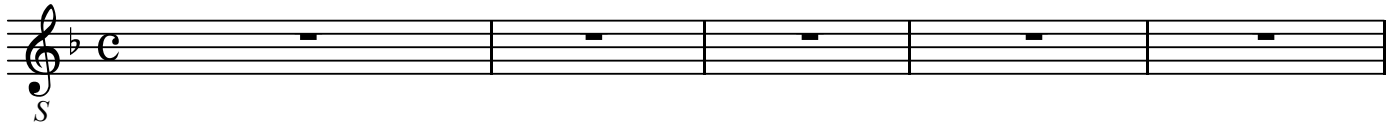
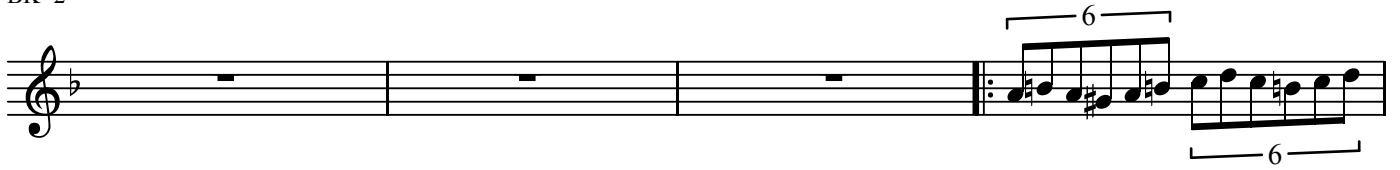


## Contrapunktus 17

BK=1



BK=2



BK=3



BK=4



BK=5



BK=6



BK=7



BK=8



BK=9



BK=10



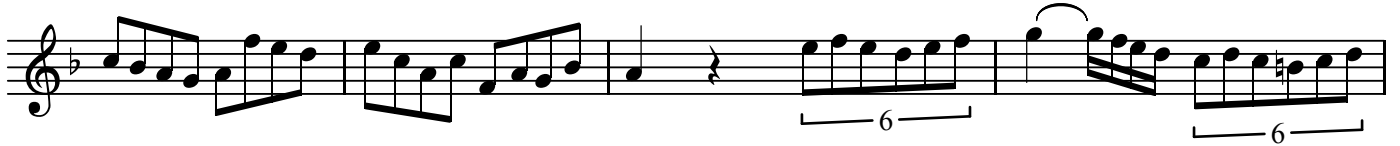
BK=11



BK=12



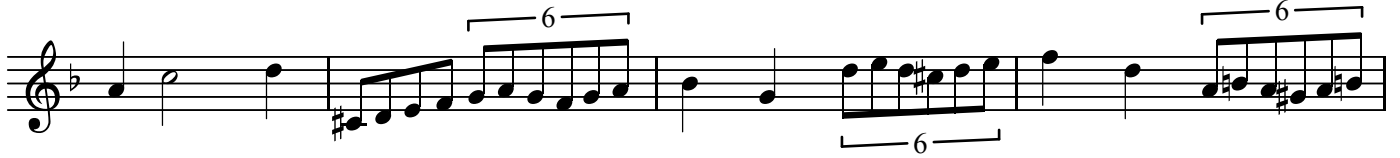
BK=13



BK=14



BK=15



BK=16



BK=17



T

# Contrapunktus 17

BK=1

Musical staff for BK=1, featuring a treble clef, a key signature of one flat (B-flat), and a common time signature (C). The staff contains a melodic line with eighth-note patterns and slurs. Two sixteenth-note figures are bracketed and labeled with the number '6'.

BK=2

Musical staff for BK=2, featuring a treble clef, a key signature of one flat (B-flat), and a common time signature (C). The staff contains a melodic line with eighth-note patterns and slurs. A sixteenth-note figure is bracketed and labeled with the number '6'.

BK=3

Musical staff for BK=3, featuring a treble clef, a key signature of one flat (B-flat), and a common time signature (C). The staff contains a melodic line with eighth-note patterns and slurs.

BK=4

Musical staff for BK=4, featuring a treble clef, a key signature of one flat (B-flat), and a common time signature (C). The staff contains a melodic line with eighth-note patterns and slurs. A sixteenth-note figure is bracketed and labeled with the number '6'.

BK=5

Musical staff for BK=5, featuring a treble clef, a key signature of one flat (B-flat), and a common time signature (C). The staff contains a melodic line with eighth-note patterns and slurs.

BK=6

Musical staff for BK=6, featuring a treble clef, a key signature of one flat (B-flat), and a common time signature (C). The staff contains a melodic line with eighth-note patterns and slurs. Two sixteenth-note figures are bracketed and labeled with the number '6'.

BK=7

Musical staff for BK=7, featuring a treble clef, a key signature of one flat (B-flat), and a common time signature (C). The staff contains a melodic line with eighth-note patterns and slurs.

BK=8

Musical staff for BK=8, featuring a treble clef, a key signature of one flat (B-flat), and a common time signature (C). The staff contains a melodic line with eighth-note patterns and slurs. Three sixteenth-note figures are bracketed and labeled with the number '6'.

BK=9

Musical staff for BK=9, featuring a treble clef, a key signature of one flat (B-flat), and a common time signature (C). The staff contains a melodic line with eighth-note patterns and slurs.

BK=10

Musical staff for BK=10, featuring a treble clef, a key signature of one flat (B-flat), and a common time signature (C). The staff contains a melodic line with eighth-note patterns and slurs. Two sixteenth-note figures are bracketed and labeled with the number '6'.

BK=11



BK=12



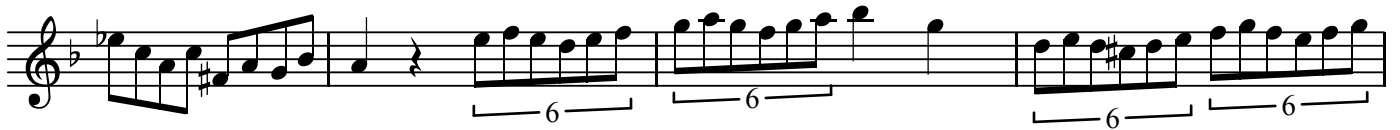
BK=13



BK=14



BK=15



BK=16



BK=17

