

Sn

Contrapunktus 13b

BK=1

Musical staff for BK=1, featuring a treble clef, a key signature of one flat (B-flat), and a common time signature (C). The staff contains a complex melodic line with numerous triplets and slurs. The label "Sn" is written below the staff.

BK=2

Musical staff for BK=2, featuring a treble clef, a key signature of one flat (B-flat), and a common time signature (C). The staff contains a complex melodic line with triplets and slurs.

BK=3

Musical staff for BK=3, featuring a treble clef, a key signature of one flat (B-flat), and a common time signature (C). The staff contains a complex melodic line with triplets and slurs.

BK=4

Musical staff for BK=4, featuring a treble clef, a key signature of one flat (B-flat), and a common time signature (C). The staff contains a simple melodic line with few notes and rests.

BK=5

Musical staff for BK=5, featuring a treble clef, a key signature of one flat (B-flat), and a common time signature (C). The staff contains a simple melodic line with few notes and rests.

BK=6

Musical staff for BK=6, featuring a treble clef, a key signature of one flat (B-flat), and a common time signature (C). The staff contains a complex melodic line with triplets and slurs.

BK=7

Musical staff for BK=7, featuring a treble clef, a key signature of one flat (B-flat), and a common time signature (C). The staff contains a complex melodic line with triplets and slurs.

BK=8

Musical staff for BK=8, featuring a treble clef, a key signature of one flat (B-flat), and a common time signature (C). The staff contains a complex melodic line with triplets and slurs.

BK=9

Musical staff for BK=9, featuring a treble clef, a key signature of one flat (B-flat), and a common time signature (C). The staff contains a complex melodic line with triplets and slurs.

BK=10

Musical staff for BK=10, featuring a treble clef, a key signature of one flat (B-flat), and a common time signature (C). The staff contains a complex melodic line with triplets and slurs.

BK=11



BK=12



BK=13



BK=14



BK=15



BK=16



BK=17



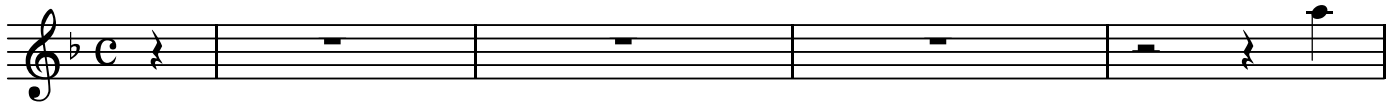
BK=18



A

Contrapunktus 13b

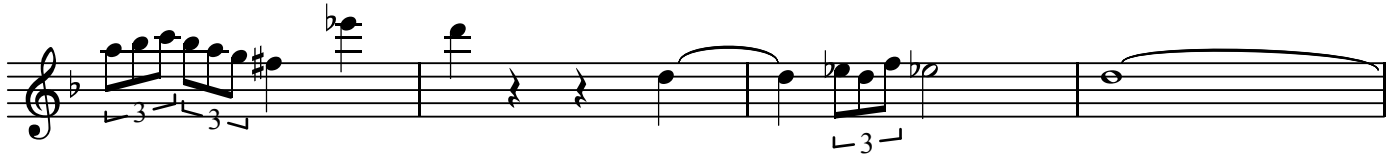
BK=1



A
BK=2



BK=3



BK=4



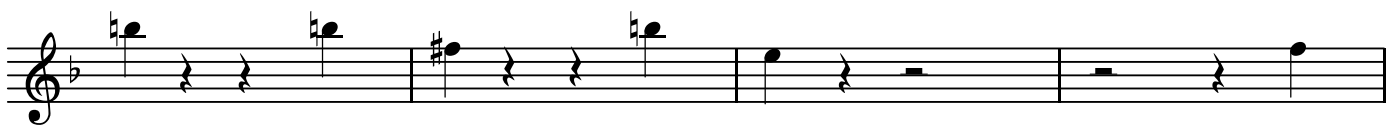
BK=5



BK=6



BK=7



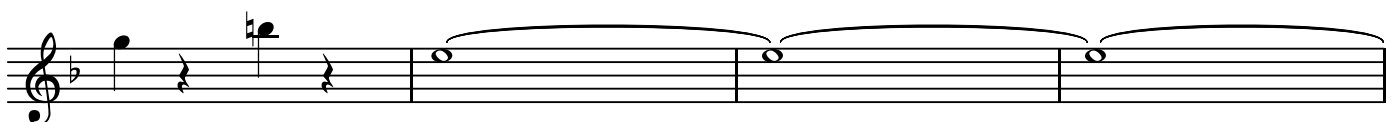
BK=8



BK=9



BK=10



BK=11



BK=12



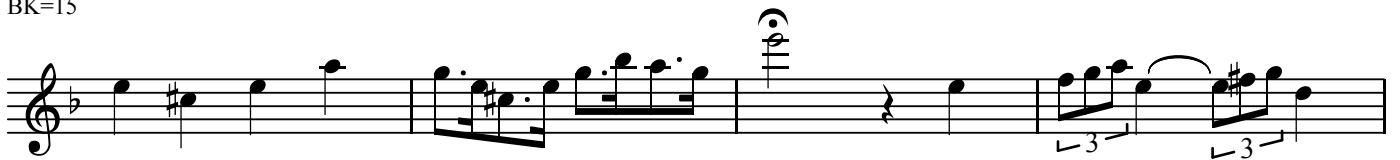
BK=13



BK=14



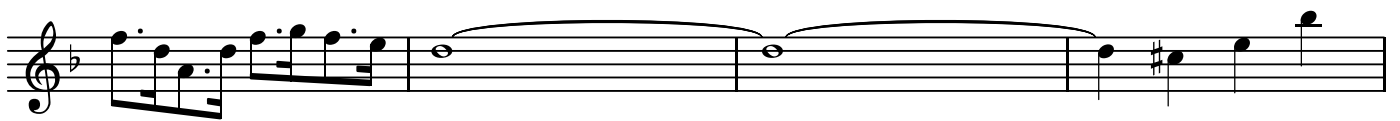
BK=15



BK=16



BK=17



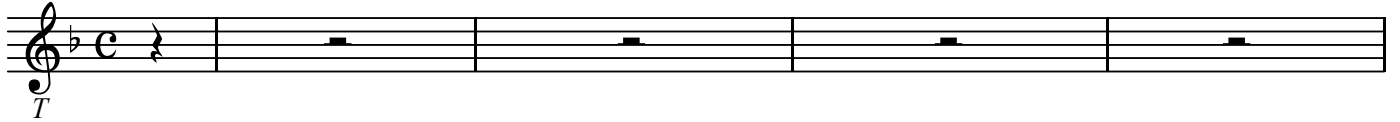
BK=18



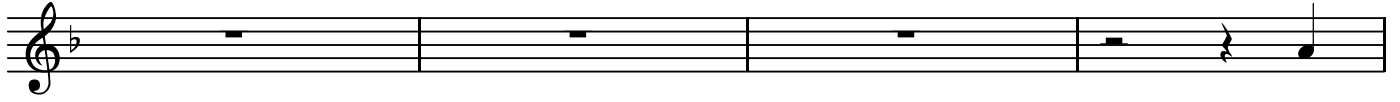
T

Contrapunktus 13b

BK=1



BK=2



BK=3



BK=4



BK=5



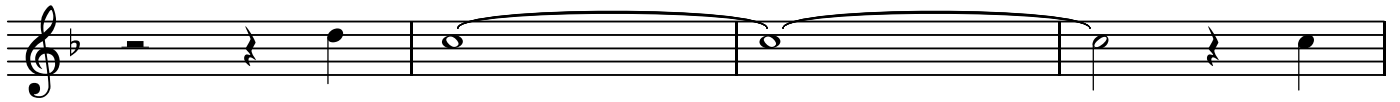
BK=6



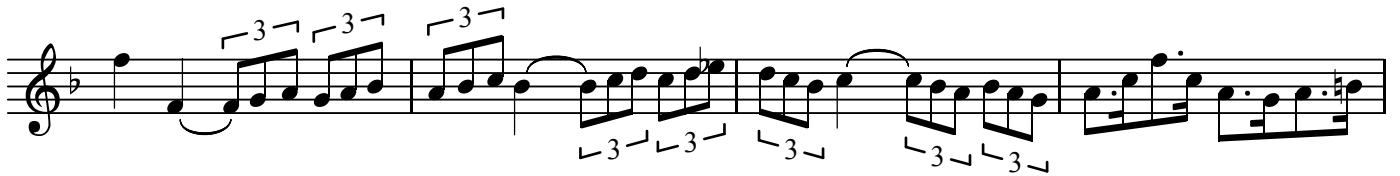
BK=7



BK=8



BK=9



BK=10



BK=11



BK=12



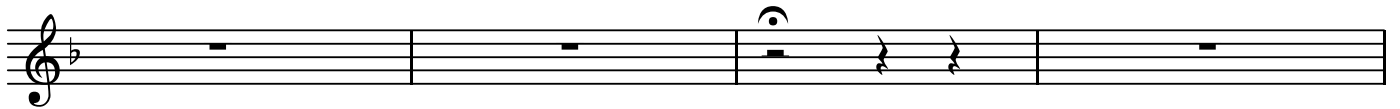
BK=13



BK=14



BK=15



BK=16



BK=17



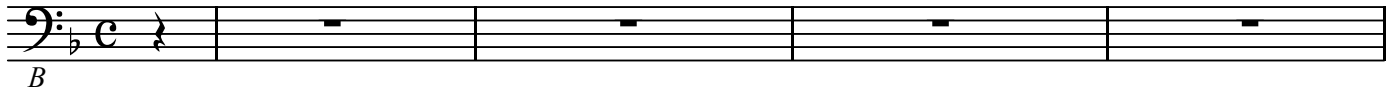
BK=18



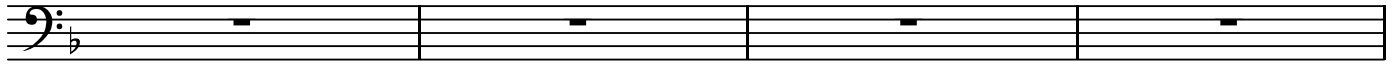
B

Contrapunktus 13b

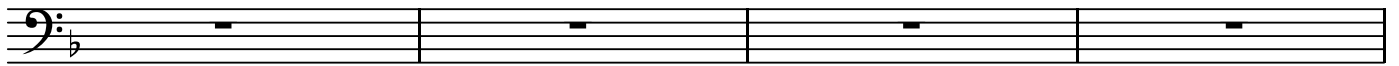
BK=1



BK=2



BK=3



BK=4



BK=5



BK=6



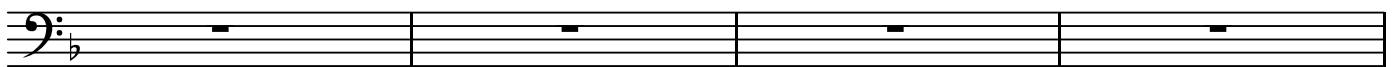
BK=7



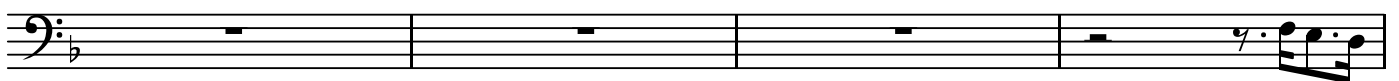
BK=8



BK=9



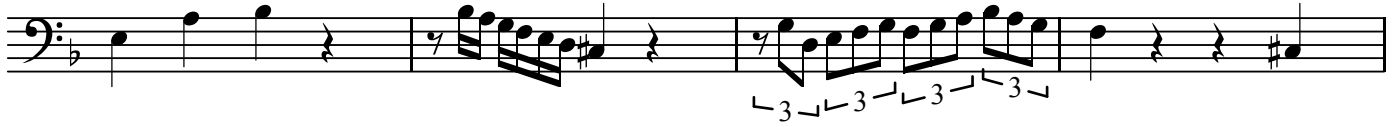
BK=10



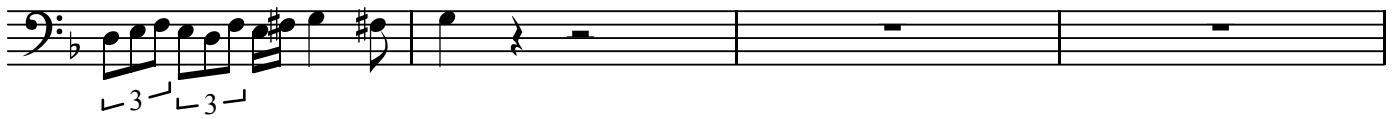
BK=11



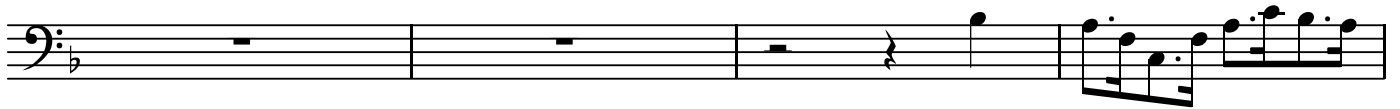
BK=12



BK=13



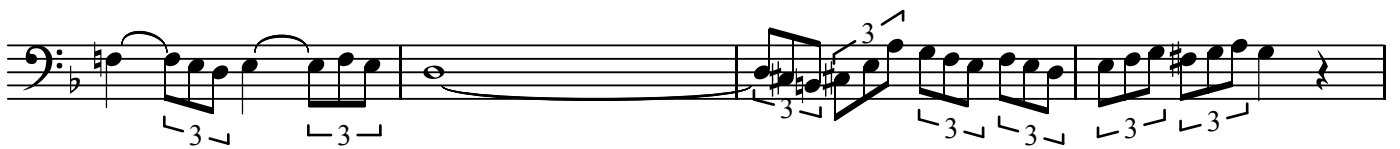
BK=14



BK=15



BK=16



BK=17



BK=18

