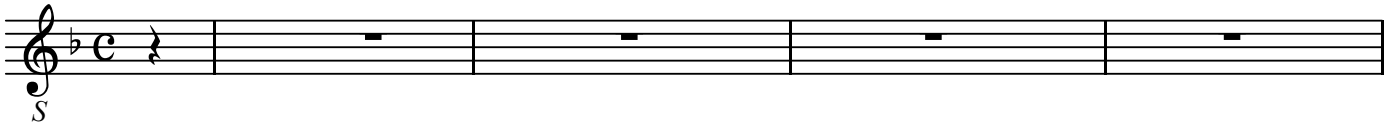
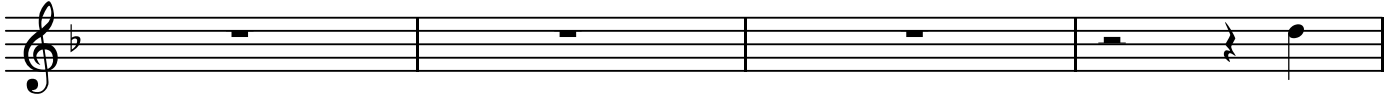


Contrapunktus 13a

BK=1



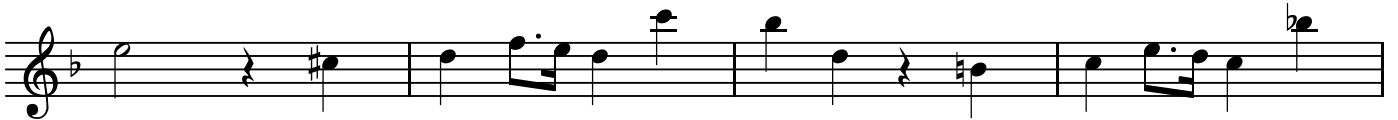
BK=2



BK=3



BK=4



BK=5



BK=6



BK=7



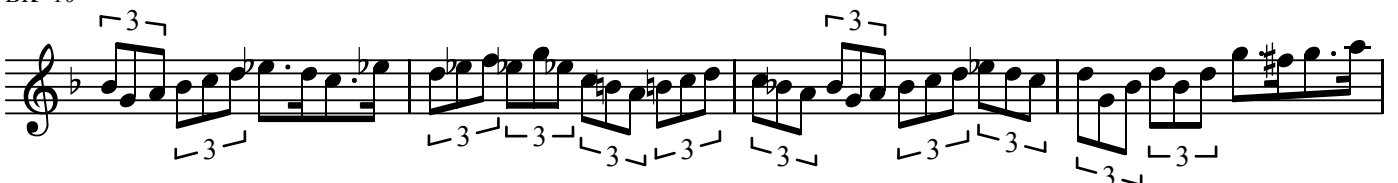
BK=8



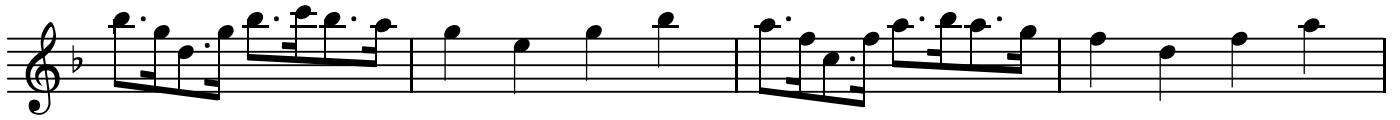
BK=9



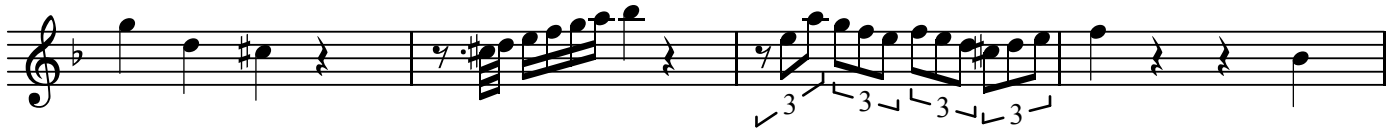
BK=10



BK=11



BK=12



BK=13



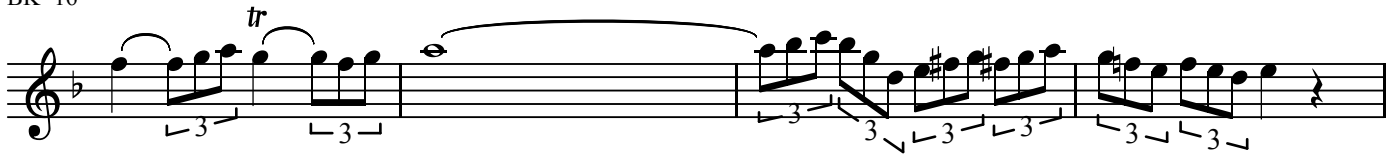
BK=14



BK=15



BK=16



BK=17



BK=18



A

Contrapunktus 13a

BK=1

Musical staff for BK=1, featuring a treble clef, a key signature of one flat (B-flat), and a common time signature (C). The staff contains a melodic line with eighth and sixteenth notes, including several triplet markings (indicated by a '3' and a bracket) and slurs.

A

BK=2

Musical staff for BK=2, featuring a treble clef, a key signature of one flat (B-flat), and a common time signature (C). The staff contains a melodic line with eighth and sixteenth notes, including triplet markings and slurs.

BK=3

Musical staff for BK=3, featuring a treble clef, a key signature of one flat (B-flat), and a common time signature (C). The staff contains a melodic line with eighth and sixteenth notes, including triplet markings and slurs.

BK=4

Musical staff for BK=4, featuring a treble clef, a key signature of one flat (B-flat), and a common time signature (C). The staff contains a melodic line with eighth and sixteenth notes, including triplet markings and slurs.

BK=5

Musical staff for BK=5, featuring a treble clef, a key signature of one flat (B-flat), and a common time signature (C). The staff contains a melodic line with eighth and sixteenth notes, including triplet markings and slurs.

BK=6

Musical staff for BK=6, featuring a treble clef, a key signature of one flat (B-flat), and a common time signature (C). The staff contains a melodic line with eighth and sixteenth notes, including triplet markings and slurs.

BK=7

Musical staff for BK=7, featuring a treble clef, a key signature of one flat (B-flat), and a common time signature (C). The staff contains a melodic line with eighth and sixteenth notes, including triplet markings and slurs.

BK=8

Musical staff for BK=8, featuring a treble clef, a key signature of one flat (B-flat), and a common time signature (C). The staff contains a melodic line with eighth and sixteenth notes, including triplet markings and slurs.

BK=9

Musical staff for BK=9, featuring a treble clef, a key signature of one flat (B-flat), and a common time signature (C). The staff contains a melodic line with eighth and sixteenth notes, including triplet markings and slurs.

BK=10

Musical staff for BK=10, featuring a treble clef, a key signature of one flat (B-flat), and a common time signature (C). The staff contains a melodic line with eighth and sixteenth notes, including triplet markings and slurs.

BK=11



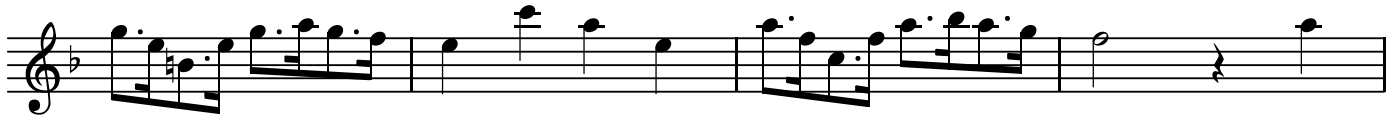
BK=12



BK=13



BK=14



BK=15



BK=16



BK=17



BK=18



B

Contrapunktus 13a

BK=1

First musical staff, labeled BK=1. It begins with a bass clef, a key signature of one flat (B-flat), and a common time signature (C). The staff contains a whole rest followed by a quarter rest, then a whole rest, and finally a quarter note G2.

BK=2

Second musical staff, labeled BK=2. It features a bass clef, one flat, and common time. The melody consists of eighth notes with various triplet markings (indicated by a '3' and a bracket) and slurs.

BK=3

Third musical staff, labeled BK=3. It continues the bass clef, one flat, and common time. It includes triplet markings, a trill (tr) over a note, and a slur.

BK=4

Fourth musical staff, labeled BK=4. It continues the bass clef, one flat, and common time. The melody is composed of eighth notes with slurs.

BK=5

Fifth musical staff, labeled BK=5. It continues the bass clef, one flat, and common time. The melody consists of eighth notes with slurs.

BK=6

Sixth musical staff, labeled BK=6. It continues the bass clef, one flat, and common time. The melody consists of quarter notes with slurs.

BK=7

Seventh musical staff, labeled BK=7. It continues the bass clef, one flat, and common time. The melody consists of quarter notes with slurs.

BK=8

Eighth musical staff, labeled BK=8. It continues the bass clef, one flat, and common time. It features eighth notes with triplet markings and slurs.

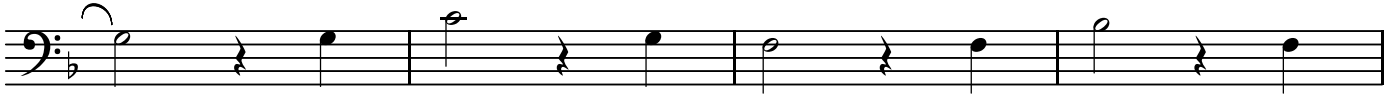
BK=9

Ninth musical staff, labeled BK=9. It continues the bass clef, one flat, and common time. It features eighth notes with triplet markings and slurs.

BK=10

Tenth musical staff, labeled BK=10. It continues the bass clef, one flat, and common time. The melody consists of quarter notes with long slurs.

BK=11



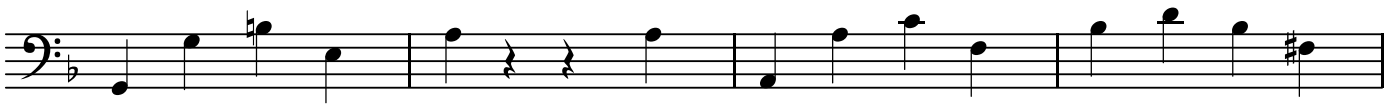
BK=12



BK=13



BK=14



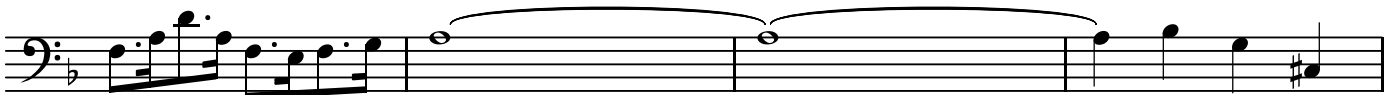
BK=15



BK=16



BK=17



BK=18

