

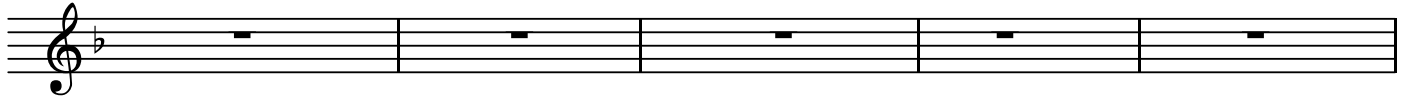
S

Contrapunktus 12a

BK=1



BK=2



BK=3



BK=4



BK=5



BK=6



BK=7



BK=8



BK=9



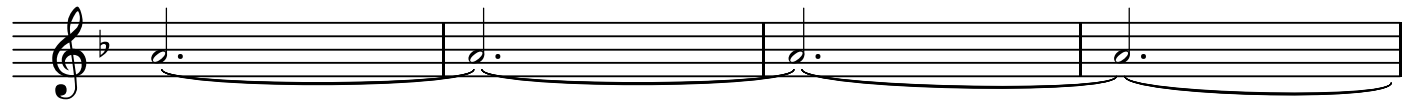
BK=10



BK=11



BK=12



BK=13



A

Contrapunktus 12a

BK=1



BK=2



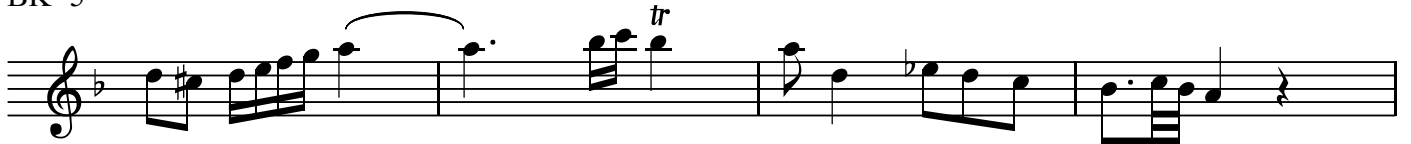
BK=3



BK=4



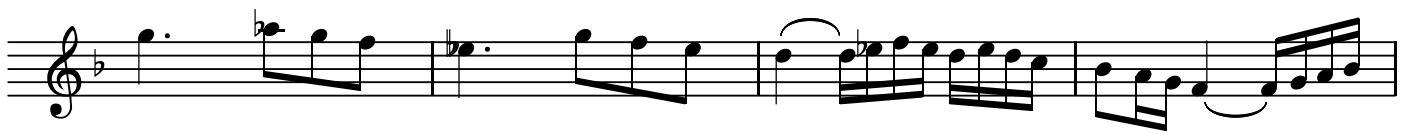
BK=5



BK=6



BK=7



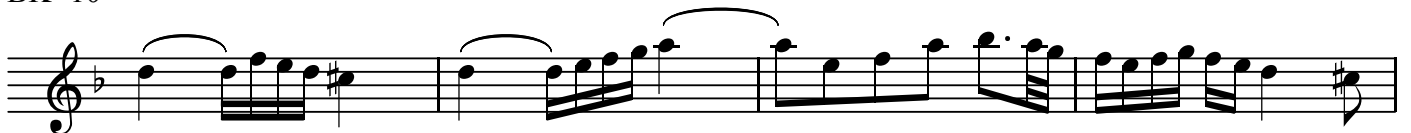
BK=8



BK=9



BK=10



BK=11



BK=12



BK=13



T

Contrapunktus 12a

BK=1



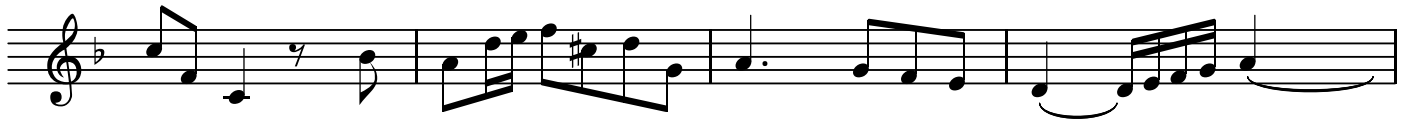
BK=2



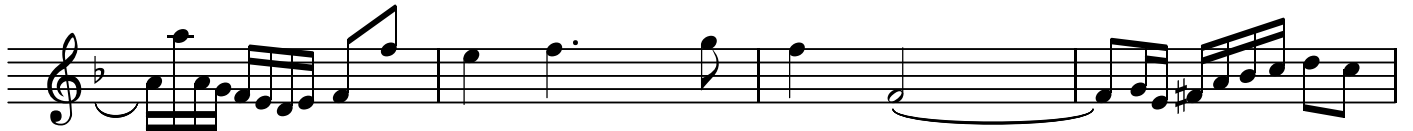
BK=3



BK=4



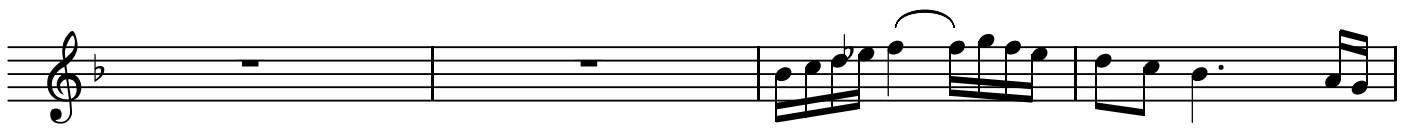
BK=5



BK=6



BK=7



BK=8



BK=9



BK=10



BK=11



BK=12



BK=13



B

Contrapunktus 12a

BK=1



First staff of music (BK=1) in bass clef, 3/4 time signature. It begins with a whole note G2, followed by a half note G2. The melody continues with quarter notes A2, Bb2, and B2. The piece concludes with an eighth-note triplet of G2, F#2, and E2.

BK=2



Second staff of music (BK=2) in bass clef, 3/4 time signature. It starts with an eighth-note triplet of G2, F#2, and E2, followed by a dotted quarter note G2. The melody continues with quarter notes A2, Bb2, and B2. The piece concludes with a whole note G2 marked with a trill (*tr*).

BK=3



Third staff of music (BK=3) in bass clef, 3/4 time signature. It begins with an eighth-note triplet of G2, F#2, and E2, followed by quarter notes G2 and A2. The melody continues with quarter notes Bb2 and B2, and concludes with an eighth-note triplet of G2, F#2, and E2.

BK=4



Fourth staff of music (BK=4) in bass clef, 3/4 time signature. It starts with an eighth-note triplet of G2, F#2, and E2, followed by quarter notes G2 and A2. The melody continues with quarter notes Bb2 and B2, and concludes with a whole rest.

BK=5



Fifth staff of music (BK=5) in bass clef, 3/4 time signature. It begins with two whole rests, followed by an eighth-note triplet of G2, F#2, and E2. The melody continues with quarter notes G2 and A2, and concludes with an eighth-note triplet of G2, F#2, and E2 marked with a trill (*tr*).

BK=6



Sixth staff of music (BK=6) in bass clef, 3/4 time signature. It starts with an eighth-note triplet of G2, F#2, and E2, followed by quarter notes G2 and A2. The melody continues with quarter notes Bb2 and B2, and concludes with an eighth-note triplet of G2, F#2, and E2.

BK=7



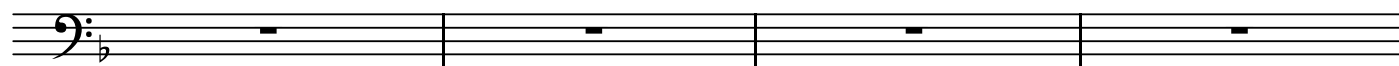
Seventh staff of music (BK=7) in bass clef, 3/4 time signature. It begins with an eighth-note triplet of G2, F#2, and E2, followed by quarter notes G2 and A2. The melody continues with quarter notes Bb2 and B2, and concludes with an eighth-note triplet of G2, F#2, and E2.

BK=8



Eighth staff of music (BK=8) in bass clef, 3/4 time signature. It starts with an eighth-note triplet of G2, F#2, and E2, followed by quarter notes G2 and A2. The melody continues with quarter notes Bb2 and B2, and concludes with an eighth-note triplet of G2, F#2, and E2 marked with a trill (*tr*).

BK=9



Ninth staff of music (BK=9) in bass clef, 3/4 time signature. This staff contains four whole rests.

BK=10



Tenth staff of music (BK=10) in bass clef, 3/4 time signature. It starts with an eighth-note triplet of G2, F#2, and E2, followed by quarter notes G2 and A2. The melody continues with quarter notes Bb2 and B2, and concludes with an eighth-note triplet of G2, F#2, and E2.

BK=11



BK=12



BK=13

